

DRIPLESS[®]

Fine Caulking and Dispensing Tools



DRIPLESS, INC.

WWW.DRIPLESS.COM



INDEX

Scan the QR codes
for detailed
tool information



Composite Tools - ErgoTech Series

PRO Series ETS ETS2000, ETS3000, ETS5000, ETS6000, ETS9000	Page 3
DIY Series ETS ETS1000, ETS1100, ETS1200, ETS1300, ETS1400	Page 3

Metal Tools

DIY Caulkers C150, C175	Page 4
Professional Caulkers CH200, SH200, CR200, SH111, CC200, CR250 - 10 oz CR400, SH400 - Quart	Page 4
Mid- and High-Ratio Premium Metal Dispensers Si300, Si500, HR300, HR900	Page 5
Sausage Pack / Bulk Load Dispensers ETS4000, ETS6000, PS600, Si600, BL6500, BL7500	Page 5
Dual Component Epoxy Dispensers DC200, DC200L, DC600, DC900, DC1500, DC50	Page 6
Polyurethane Foam Dispensers FG450, FG600XL, FG700	Page 6

Accessories and Sundry Items

Paint Dawg Buckets, Spatulas, Follow Plates, Replacement Parts	Page 7
----------------------------------------------------------------	--------

Specifications

Page 7

Terms and Conditions

Prepaid drop ship minimum order is \$250. Delivery outside the continental US and under minimum will be quoted FOB Dripless, Inc. warehouse. Ask sales rep for details.

Dripless, Inc. stands behind its product quality and shipping logistics but sometimes damages or shortages do occur. Please report any discrepancies within 48 hours. For damaged product please submit a detailed report with photos, especially important when delivered by common carrier.

Delinquent accounts may be subject to a 1.5% monthly finance charge.

Restocking fee is 15%. Return freight paid by customer. Refund or credit on product returned in original condition only.

Prices are subject to change.



2455 Bennett Valley Road #A212, Santa Rosa, CA 95404 USA

web: www.dripless.com

email: dripless@sonic.net

phone: +1 707 568 5081

Dripless® ERGONOMIC TECHNOLOGY SERIES



ADVANCED DESIGN COMPOSITE DISPENSERS

Dripless® exclusive
Engineered composites
Ergonomic design
Lightweight
Hardened drive components
Tougher than steel

ETS1000
"DIY"



Full time Dripless®
10:1 Thrust Ratio
40% lighter than metal tool
upc: 7 64509 01110 2

ETS2000
"Painter"



Full time Dripless®
12:1 Thrust Ratio
Rotating barrel, cutter, poker
upc: 7 64509 01002 0

ETS3000
"Pro"



Drip / Dripless® switch
18:1 Thrust Ratio
For thicker sealants/adhesives
upc: 7 64509 01003 7

ETS5000
"Quart"



Drip / Dripless® switch
18:1 Thrust Ratio
Thick flooring adhesive choice
upc: 7 64509 01005 1

ETS6000
"Sausage"



Drip / Dripless® switch
18:1 Thrust Ratio
20oz sausage & 10oz tube
upc: 7 64509 01006 8

ETS9000
"Beast"



Pressure release switch
26:1 Thrust Ratio
Trigger play adjustment screw
upc: 7 64509 01009 9

DIY Composite Caulkers

ETS1100



Cradle body
Round rod
10:1 thrust ratio
7 64509 01111 9

ETS1200



Cradle body
Hex rod
10:1 thrust ratio
7 64509 01112 6

ETS1300



Skeleton frame
Hex rod
10:1 thrust ratio
7 64509 01113 3

ETS1400



Cradle body
Ratchet rod
10:1 thrust ratio
7 64509 01114 0

Dripless® METAL DISPENSING TOOLS



DIY LEVEL

Full time Dripless®
10 oz
Cradle body
Cutter and Poker

C150



Round rod
6:1 Thrust ratio
upc: 7 64509 01150 8

CR175



Ratchet rod
6:1 Thrust ratio
upc: 7 64509 01175 1

PRO LEVEL 10 OZ

Feature Dripless® mechanism
Steel construction
Plated rods
Cutter and poker
Mid-weight product gunning

CH200



Cradle body / hex rod
10:1 Thrust ratio
upc: 7 64509 01200 0

SH200



Skeleton body / hex rod
10:1 Thrust ratio
upc: 7 64509 01210 9

CR200



Cradle body / ratchet rod
10:1 Thrust ratio
upc: 7 64509 01220 8

CR250



Retro ratchet rod cradle
10:1 Thrust ratio
upc: 7 64509 01320 5

SH111
"The Brute"



Skeleton frame / hex rod
11:1 Thrust ratio
upc: 7 64509 01215 4

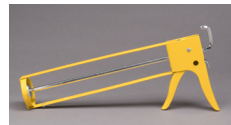
CC200



Optional Drip / Dripless®
Chrome body, ratchet rod
10:1 Thrust ratio
upc: 7 64509 01330 4

PRO LEVEL QUART

SH400



Skeleton body / hex rod
10:1 Thrust ratio
upc: 7 64509 01410 3

CR400



Cradle body / ratchet rod
12:1 Thrust ratio
upc: 7 64509 01420 2

Dripless®

HIGH RATIO, SAUSAGE & BULK LOADERS



HIGH RATIO

High quality steel construction
Hardened rod and drive dog
360° rotating barrel

Si300
10oz / 300ml



18:1 Thrust ratio
Drip / Dripless® switch
upc: 7 64509 01150 8

Si500
Quart



18:1 Thrust ratio
Drip / Dripless® switch
upc: 7 64509 01175 1

HR300
10oz / 300ml



26:1 Thrust ratio
Highest quality dripper
upc: 7 64509 01200 0

HR900
Quart



26:1 Thrust ratio
Highest quality dripper
upc: 7 64509 01210 9

SAUSAGE

Drip / Dripless® switch
Use with foil pack or cartridge
Hardened rod and drive dog
360° rotating barrel
Boxed with 6 nozzles

ETS6000
20oz / 600ml



Composite body
18:1 Thrust Ratio
upc: 7 64509 01006 8

ETS4000
13.5oz / 400ml



Composite body
18:1 Thrust Ratio
upc: 7 64509 01320 5

Si600
20oz / 600ml



Aluminum body
18:1 Thrust Ratio
upc: 7 64509 01215 4

PS600
20oz / 600ml



Value metal dripper
16:1 Thrust Ratio
upc: 7 64509 01330 4

**Remember to get your
Easy Switch Push Plate**
 Item # EZS
 (Easily switch between sausage and tube)



BULK LOAD

Drip / Dripless® switch
Double buna rubber seals
Hardened rod and drive dog
Boxed with 6 nozzles
May be used with FP-5 follow plate

BL6500



450ml / 15oz
18:1 Thrust Ratio
upc: 7 64509 01410 3

BL7500



900ml / 29oz / quart
18:1 Thrust Ratio
upc: 7 64509 01420 2

Dripless®

DUAL COMPONENT & FOAM DISPENSERS



DUAL COMPONENT

Made in Taiwan
26:1 thrust ratio (except DC50)
Twin thrust plates
Trigger play adjustment screw

DC200L
10 oz



1:1 or 2:1 mix ratio epoxy
Also use with 10oz tube
upc: 7 64509 02100 2

DC600
22 oz



1:1 (300ml:300ml) mix ratio
2:1 (300ml:150ml) mix ratio
upc: 7 64509 02600 7

DC900
30 oz



10:1 (750ml:75ml) mix ratio
1:1 (450ml:450ml) mix ratio
upc: 7 64509 02900 8

DC1500
50 oz



1:1 (750ml:750ml) mix ratio
upc: 7 64509 02900 8

DC50
1.6 oz



Works with common 50ml epoxy tube mix ratios
Full time Dripless® function
upc: 7 64509 02050 0

FOAM DISPENSERS

German engineered
Precision flow control
Top quality internal parts
Air tight nozzle end seal
For common gun-grade cans

FG450
4 nozzles



Composite w/ metal adapter
Large flow adjustment knob
upc: 7 64509 03450 7

FG600XL
6 nozzles



Metal w/ comfort handle
26" long barrel
upc: 7 64509 03600 6

FG700
6 nozzles



PTFE coated metal body
Ergonomic handle
upc: 7 64509 03200 8

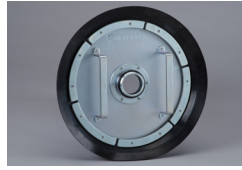
Dripless®

SUNDRIES / NOZZLES / PARTS



Buckets

PD-01.....5 quart
PD-20....2 gallon
PD-50....5 gallon



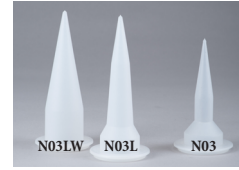
Follow Plate

FP-1.....1 gallon
FP-5.....5 gallon



Parts

Various
 Assorted



Nozzles

N03.....Fine
N03L.....Fine long
N03LW..Long Wide



Spatulas

GPS-90.....Giant

SPECIFICATIONS

ITEM#	UPC	CASE	I2of5
C150	7 64509 01150 8	12	1 07 64509 01150 5
CR175	7 64509 01175 1	12	1 07 64509 01175 8
CH200	7 64509 01200 0	12	1 07 64509 01200 7
CR200	7 64509 01220 8	12	1 07 64509 01220 5
CR250	7 64509 01320 5	12	1 07 64509 01320 2
CR400	7 64509 01420 2	12	1 07 64509 01420 9
CC200	7 64509 01330 4	12	1 07 64509 01330 1
SH200	7 64509 01210 9	12	1 07 64509 01210 6
SH111	7 64509 01215 4	12	1 07 64509 01215 1
SH400	7 64509 01410 3	12	1 07 64509 01410 0
Si300	7 64509 01300 7	6	1 07 64509 01300 4
Si500	7 64509 01450 9	6	1 07 64509 01450 6
ETS1000	7 64509 01110 2	12	1 07 64509 01110 9
ETS1100	7 64509 01111 9	12	1 07 64509 01111 6
ETS1200	7 64509 01112 6	12	1 07 64509 01112 3
ETS1300	7 64509 01113 3	12	1 07 64509 01113 0
ETS1400	7 64509 01114 0	12	1 07 64509 01114 7
ETS2000	7 64509 01002 0	6	1 07 64509 01002 7
ETS3000	7 64509 01003 7	6	1 07 64509 01003 4
ETS4000	7 64509 01004 4	1	1 07 64509 01004 1
ETS5000	7 64509 01005 1	6	1 07 64509 01005 8
ETS6000	7 64509 01006 8	1	1 07 64509 01006 5
ETS9000	7 64509 01009 9	6	1 07 64509 01009 6
PS600	7 64509 01600 8	1	1 07 64509 01600 5
Si600	7 64509 01650 3	1	1 07 64509 01650 0
BL6500	7 64509 06501 3	1	1 07 64509 06501 0
BL7500	7 64509 07501 2	1	1 07 64509 07501 9
HR300	7 64509 02300 6	6	1 07 64509 02300 3
HR900	7 64509 02990 9	6	1 07 64509 02990 6
DC50	7 64509 02050 0	1	1 07 64509 02050 7
DC200L	7 64509 02100 2	1	1 07 64509 02100 9
DC600	7 64509 02600 7	1	1 07 64509 02600 4
DC900	7 64509 02900 8	1	1 07 64509 02900 5

ITEM#	UPC	CASE	I2of5
C050	7 64509 01050 1	12	1 07 64509 01050 8
R1101	7 64509 01101 0	12	1 07 64509 01101 7
FG450	7 64509 03450 7	1	1 07 64509 03450 4
FG600XL	7 64509 03600 6	1	1 07 64509 03600 3
FG700	7 64509 03200 8	1	1 07 64509 03200 5
PD-01	7 64509 01001 3	20	3 07 64509 01001 4
PD-20	7 64509 01020 4	20	3 07 64509 01020 5
PD-50	7 64509 01550 6	10	3 07 64509 01550 7
GPS90	7 64509 01090 7	12	1 07 64509 01090 4
EZS	7 64509 06027 8	10	1 07 64509 06027 5
FP1	7 64509 01000 6	6	1 07 64509 01000 3
FP5	7 64509 05000 2	1	n/a
N03	7 64509 06008 7	10	1 07 64509 06008 4
N03L	7 64509 06007 0	10	1 07 64509 06007 7
N03LW	7 64509 06005 6	10	1 07 64509 06005 3

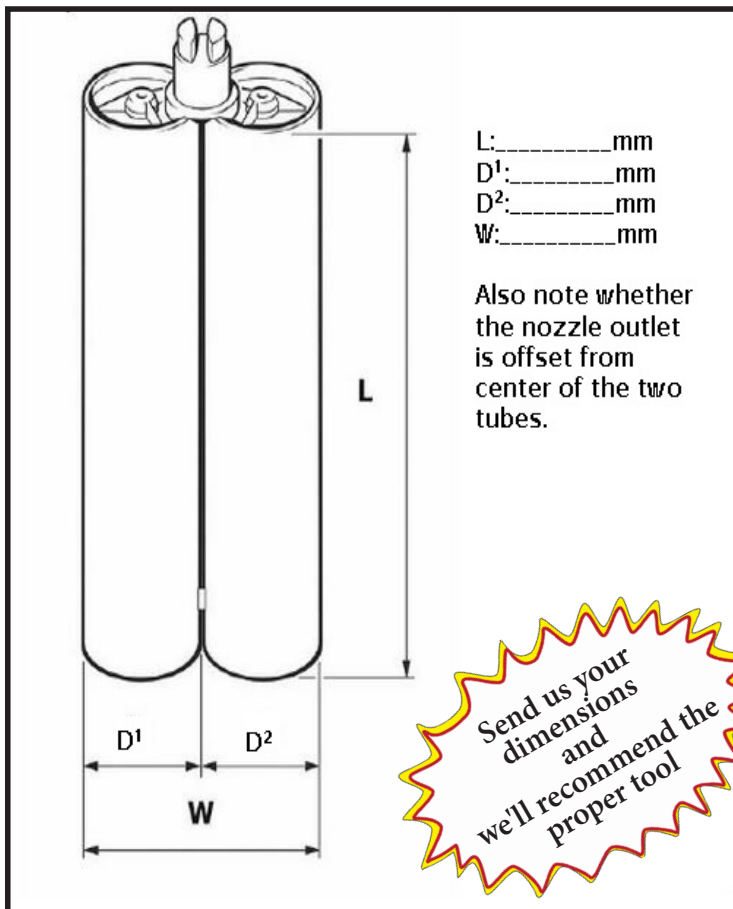
REPLACEMENT PARTS

ITEM#/DESCRIPTION	EACH	UPC
N09-LWC: ETS6000 Front Cap Ring	1	7 64509 06001 8
RCR-ER: Rear Cap Ring ETS6000 & BL's	1	7 64509 06004 9
PS-C: Front/Rear cap ring for PS600's	1	7 64509 01061 7
FCR-BL: Front Cap Ring for BL's	1	7 64509 06006 3
CHIN: Chinking Plate for BL's	1	7 64509 06015 5
BL-KIT: Seal Assembly Kit for BL's	1	7 64509 06020 9
PPN: Pusher Plate for ETS6000 & PS600	1	7 64509 06025 4

Dripless® Pro Tips



Determining The Correct Dual Component Epoxy Gun



Cleaning Your ETS Tool

Keep your gun functioning properly with periodic cleaning

(Note: If the drive mechanism is "slipping" - you pull the trigger and the rod doesn't advance - it may be because there is contaminant of some sort in the drive mechanism. Cleaning it often solves the issue...)

- 1) First remove the nut on the end of the rod that holds the push plate on.
- 2) Make sure the switch, if there is one on your model, is in the Dripless® (down) position then pull the rod completely out of the gun.
- 3) Remove the drive dog and drive dog spring by wedging out the spring.
- 4) Clean the rod and drive dog (especially inside the center hole) with any common solvent.
- 5) Put the drive dog back into the front chamber of the handle with the deboss mark facing forward, then wedge the drive dog spring back into place.
- 5) Reassemble the gun by feeding the rod back through the spring, silicone plug, drive dog and drive dog spring.
- 6) Place the push plate back onto the end of the rod and secure with the nut.

How To Use The Famous ETS Handle Switch

ETS3000, ETS4000, ETS5000, ETS6000: Flip the switch parallel to the handle to engage the Dripless® function
Flip it perpendicular to the handle to turn your gun into a "dripper"

BL6500, BL7500: Flip the switch to the Dripless® position - parallel to the handle - to suck product into the barrel
Gun product in either the "Dripless®" or "dripper" position

ETS9000: For use with ultra-thick product gunning - experiment with it, but probably gun in the "dripper" position
Release built-up pressure by flipping switch to the Dripless® position

THANKS FOR USING DRIPLESS® TOOLS