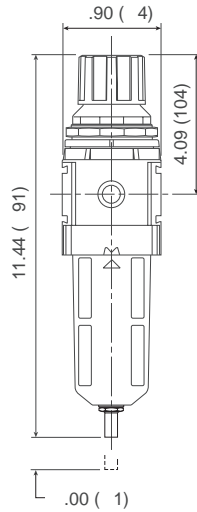


## Wilkerson Standard Filter / Regulators

### Features:

- 0-125 PSIG adjusting range
- 5 micron element
- 6 oz. bowl
- self-relieving standard
- spring-loaded diaphragm
- To increase regulated pressure, pull adjusting knob and turn clockwise. To reduce pressure, turn knob counter clockwise. To lock knob, push down.
- Two ¼" gauge ports located on the front and rear faces of the body. These ports may be used as additional regulated ports or for pressure gauges. (Plug unused port(s)).
- supplied with GC230 gauge
- maximum operating conditions:
  - transparent bowl: **150 PSIG** (10.3 bar) and **32°F to 125°F** (0°C to 52°C)
  - metal bowl: **250 PSIG** (17.2 bar) and **32°F to 150°F** (0°C to 65.5°C)



with transparent bowl

F

Size	Flow (SCFM)	With Transparent Bowl and Guard				With Metal Bowl with Sight Glass			
		Automatic Drain		Manual Drain		Automatic Drain		Manual Drain	
		Part #	Price/E	Part #	Price/E	Part #	Price/E	Part #	Price/E
⅜"	140	<b>B28-03AG</b>	<b>\$280.70</b>	<b>B28-03MG</b>	<b>\$221.15</b>	<b>B28-03AGMB</b>	<b>\$285.50</b>	<b>B28-03MGMB</b>	<b>\$225.90</b>
½"	165	<b>B28-04AG</b>	<b>280.70</b>	<b>B28-04MG</b>	<b>221.15</b>	<b>B28-04AGMB</b>	<b>285.50</b>	<b>B28-04MGMB</b>	<b>225.90</b>
¾"	175	<b>B28-06AG</b>	<b>280.70</b>	<b>B28-06MG</b>	<b>221.15</b>	<b>B28-06AGMB</b>	<b>285.50</b>	<b>B28-06MGMB</b>	<b>225.90</b>

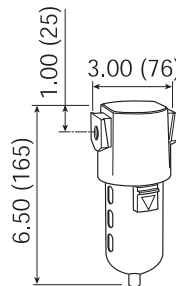
See page 235 for filter/regulator accessories.  
SCFM ratings at 100 PSIG inlet pressure.

## Wilkerson EconOmist® Compact Lubricators

Designed so that all the oil flow observed in the sight dome is broken into a mist and delivered via the airflow to the application. The oil in the bowl can be filled or replenished without interrupting airflow or bleeding pressure from the system. Once the oil-fill cap is removed, the bowl is depressurized and isolated from line pressure, and the bowl itself can then be removed for faster refill, if desired. The bowl can be filled right to the top.

### Features:

- 5 oz. bowl
- full view sight dome
- fill under pressure design
- maximum operating conditions:
  - transparent bowl: **150 PSIG** (10.3 bar) and **32°F to 125°F** (0°C to 52°C)
  - metal bowl: **200 PSIG** (13.8 bar) and **32°F to 150°F** (0°C to 65.5°C)



transparent bowl with guard

Size	Flow (SCFM)	With Transparent Bowl		With Metal Bowl	
		Part #	Price/E	Part #	Price/E
¼"	36.1	<b>L16-02A</b>	<b>\$149.85</b>	<b>L16-02AMB</b>	<b>\$166.90</b>
⅜"	58.5	<b>L16-03A</b>	<b>149.85</b>	<b>L16-03AMB</b>	<b>166.90</b>
½"	64.0	<b>L16-04A</b>	<b>149.85</b>	<b>L16-04AMB</b>	<b>166.90</b>

See pages 232-234 for lubricator accessories. See page 149 for air tool lubricant.



FRL's are designed for air service only, unless otherwise indicated.

SCFM ratings at 150 PSIG inlet pressure.