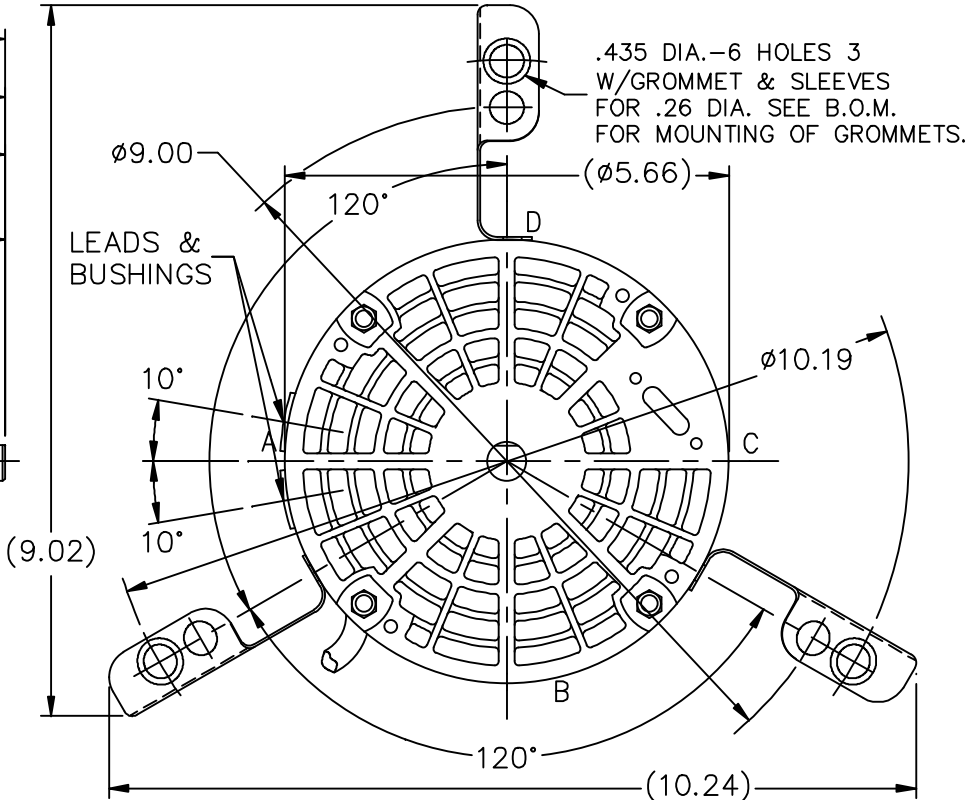
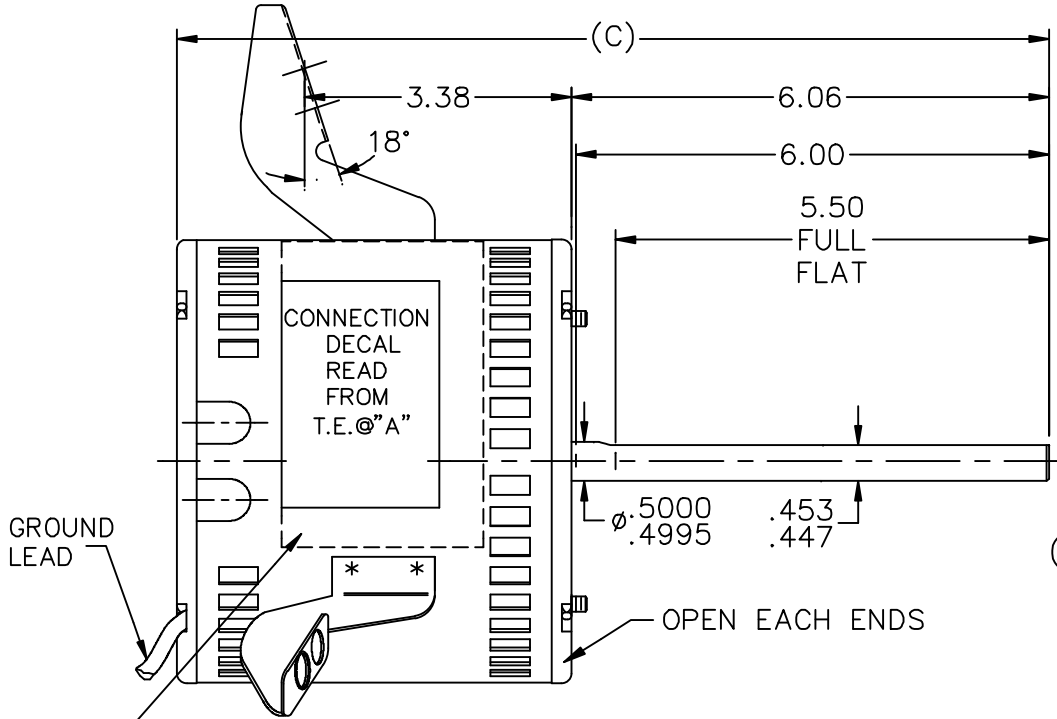


TERM. END



N.P. LOC'D @ 45° CW OF 'C' READ FROM T.E. WHEN TWO PIECE N.P. IS USED LOCATE 1/2" ON EACH SIDE OF LUG

LEAD DESCRIPTION:

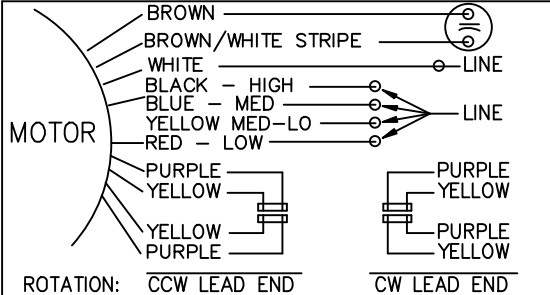
1 WHITE, 1 BLACK, 1 YELLOW, 1 BLUE, & 1 RED LEAD WITH .50 BARE WIRE STRIP. 30.00" LONG.


2 BROWN LEADS WITH .25 FLAG-TYPE QUICK CONNECTS, 30.00" LONG. BROWN/WHITE MARKED LEAD IS COMMON TO WHITE.

REVERSING LEADS ARE MOLDED INTO MATING PULL-APART PLUGS. 1 YELLOW & 1 PURPLE LEAD PER PLUG. 5.00" LONG.

GREEN LEAD WITH TERM. FOR #10 SCREW 12.00" LONG.

DASH	FR	C
375	48	10.31
400	48	10.56
450	48	11.06
475	48	11.31



				TOLERANCES UNLESS SPECIFIED			DRAWN SP 07-23-2008				
				DEC.	INCHES		CHK NB 07-23-2008				
				.X	±.1		APPD SP 07-23-2008				
				.XX	±.03		SCALE 13=32				
				.XXX	±.005		REF SS403519				
				.XXXX	±.0005	MAT'L.	FMF 08-2127				
NO.	REVISION	BY & DATE	CHK	ANG	±7'30"	FINISH	PREV				
THIS DRAWING IN DESIGN AND DETAIL IS OUR PROPERTY AND MUST NOT BE USED EXCEPT IN CONNECTION WITH OUR WORK ALL RIGHTS OF DESIGN AND INVENTION ARE RESERVED THIS IS AN ELECTRONICALLY GENERATED DOCUMENT - DO NOT SCALE THIS PRINT			RFP 07-23-2008		CAD FILE SS403750		SIZE	DRAWING NO.	PAGE	OF	REV.
			DIST WP				A	SS403750			