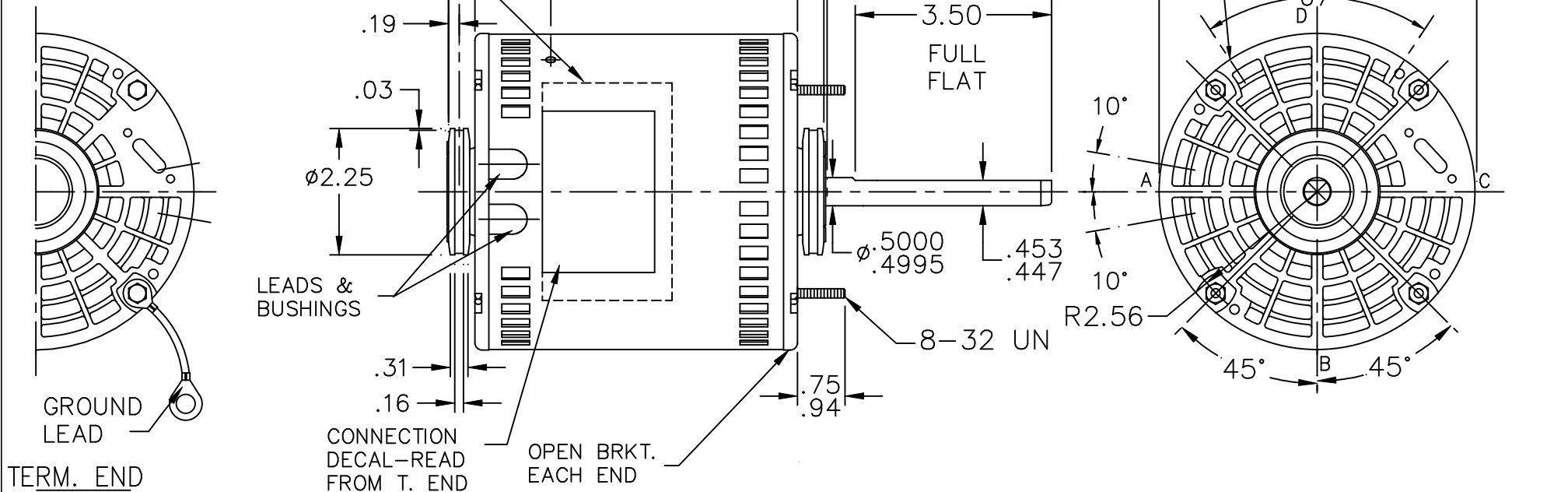


NAMEPLATE LOC. @ 'C'  
 READ FROM TERM. END  
 WHEN TWO PART N.P. IS USED,  
 CENTER PIECES AT 'C'



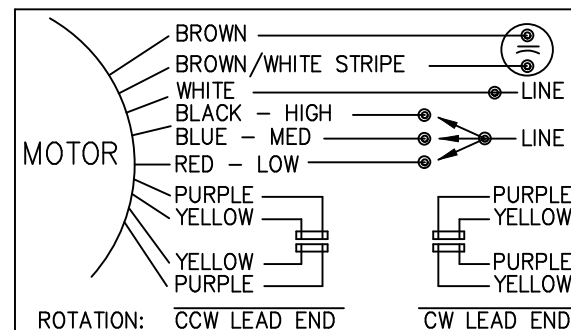
LEAD DESCRIPTION:

1 WHITE, 1 BLACK, 1 BLUE, & 1 RED LEAD WITH  
 .50 BARE WIRE STRIP. 30.00" LONG

2 BROWN LEADS WITH .25 FLAG-TYPE QUICK  
 CONNECTS 30.00" LONG. BROWN/WHITE MARKED  
 LEAD IS COMMON TO WHITE.

REVERSING LEADS ARE MOLDED INTO MATING  
 PULL-APART PLUGS. 1 YELLOW & 1 PURPLE  
 LEAD PER PLUG. 5.00" LONG.

GREEN GROUND LEAD WITH TERM. FOR  
 #10 SCREW 12.00" LONG.



DASH	FR.	C	A
475	48Y	10.25	5.25
525	48Y	10.75	5.75

124/2008

TOLERANCES  
 UNLESS SPECIFIED

DEC. INCHES

.X ±.1

.XX ±.03

.XXX ±.005

.XXXX ±.0005

ANG ±7'30"



TITLE OUTLINE

MAT'L.

FINISH

DRAWN NJS 08-19-2004

CHK ML 08-19-2004

APPD MJS 08-19-2004

SCALE 3=8

REF

FMF MU61357

PREV

NO. REVISION BY & DATE

THIS DRAWING IN DESIGN AND DETAIL IS OUR PROPERTY AND MUST NOT BE USED EXCEPT  
 IN CONNECTION WITH OUR WORK ALL RIGHTS OF DESIGN AND INVENTION ARE RESERVED  
 THIS IS AN ELECTRONICALLY GENERATED DOCUMENT - DO NOT SCALE THIS PRINT

RFP 08-19-2004

DIST WP

CAD FILE SS403435

SIZE

A

DRAWING NO. PAGE OF

SS403435

REV.