

M-8540

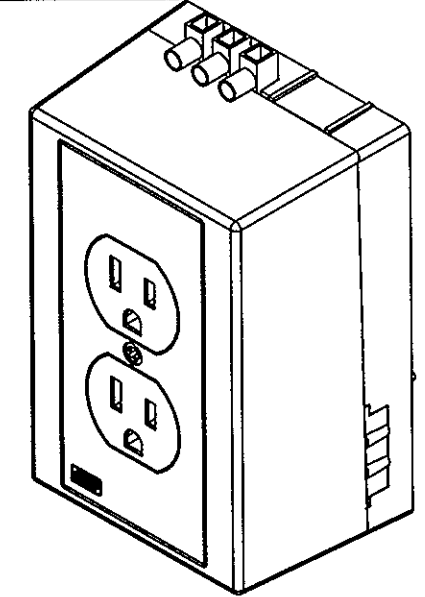
11

"CATALOG NO.	"CATALOG NO. ELECTRICAL RATING"	WIRING DEVICE		CIRCUIT BREAKER	DIN RAIL MTG.	COMMENTS
		CATALOG NO.	RATING			
DRUB15	15A, 125V	BR15GRY	120V 15A	NO	VERTICAL	
DRUB15CBS	5A, 125V	BR15GRY	120V 15A	YES	VERTICAL	
DRUB15H	15A, 125V	BR15GRY	120V 15A	NO	HORIZONTAL	
DRUB15HCB5	5A, 125V	BR15GRY	120V 15A	YES	HORIZONTAL	
DRUB20	20A, 125V	BR20GRY	120V 20A	NO	VERTICAL	
DRUBGF115	"15A, 125VAC 60Hz, CLASS A"	GFRST15GY	120VAC 15A	NO	VERTICAL	
DRUBGF115CBS	"5A, 125VAC 60Hz, CLASS A"	GFRST15GY	120VAC 15A	YES	VERTICAL	
DRUBGF115H	"15A, 125VAC 60Hz, CLASS A"	GFRST15GY	120VAC 15A	NO	HORIZONTAL	
DRUBGF115HCB5	"5A, 125VAC 60Hz, CLASS A"	GFRST15GY	120VAC 15A	YES	HORIZONTAL	
DRUBGF115AC	"15A, 125VAC 60Hz, CLASS A"	GFRST15GY	120VAC 15A	NO	VERTICAL	
DRUBIG15	15A, 125V	LCR5252HGGY	120V 15A	NO	VERTICAL	
DRUBTVSS15	"15A, 125VAC 60Hz"	HBL5262GYSA	120VAC 15A	NO	VERTICAL	
DRUBKIT	"20A MAX TOTAL 250V, 600VAC MAX"	NONE		NO	VERTICAL	3
DRUBKITCBS	"5A MAX. 250V, 600VAC MAX"	NONE		YES	VERTICAL	3
DRUBTVSS15AC	15A, 125VAC, 60 Hz	HBL5262GYSA	120VAC 15A	NO	VERTICAL	"AUX CONTACT"

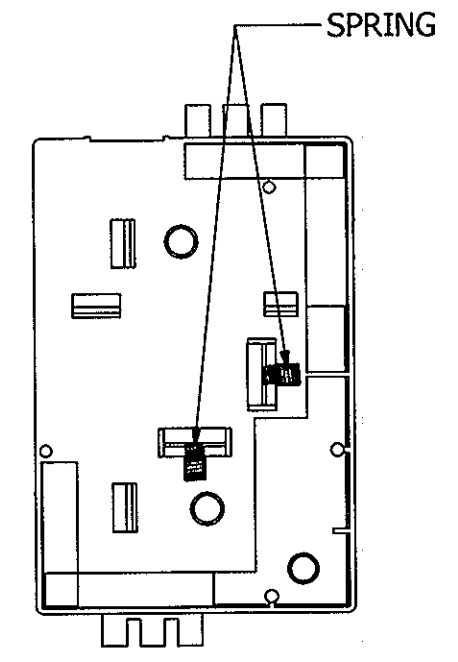
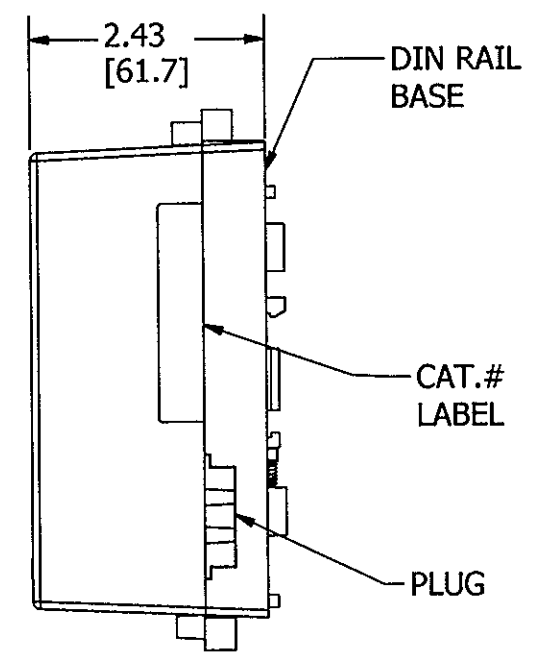
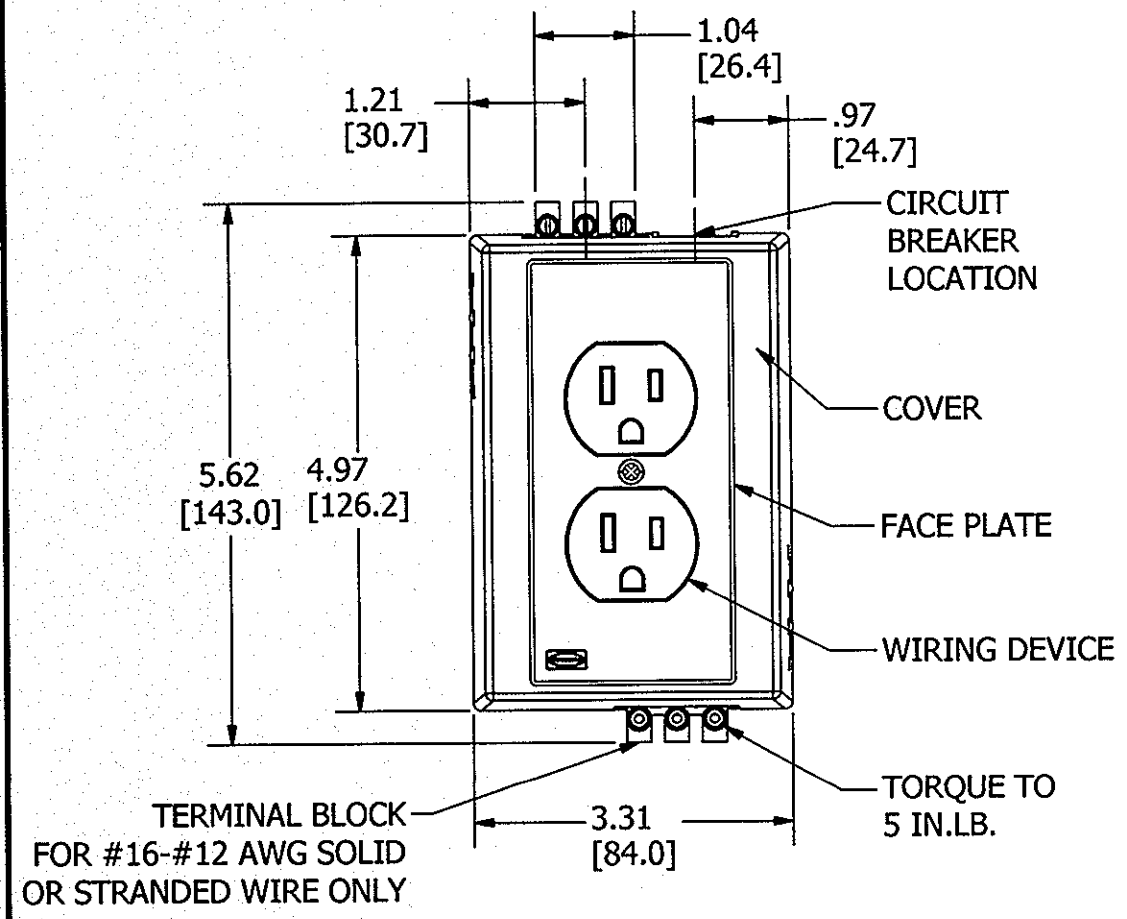
"CATALOG NO."	"CATALOG NO. ELECTRICAL RATING"	WIRING DEVICE		CIRCUIT BREAKER	DIN RAIL MTG.	COMMENTS
		CATALOG NO.	RATING			
KP1GY		NONE		--	--	FACEPLATE
KP8GY		NONE		--	--	FACEPLATE
KP26GY		NONE		--	--	FACEPLATE
KP7GY		NONE		--	--	FACEPLATE
KP720GY		NONE		--	--	FACEPLATE
DRUB20AC	20A, 125V	BR20GRY	125V, 20A	NO	VERTICAL	
DRUB20ACCB5	5A, 125V	BR20GRY	125V, 20A	YES	VERTICAL	
DRUBGF120	"20A, 125VAC 60Hz, CLASS A"	GFRST20GY	125VAC, 20A	NO	VERTICAL	
DRUBGF120AC	"20A, 125VAC 60Hz, CLASS A"	GFRST20GY	125VAC, 20A	NO	VERTICAL	
DRUBKITAC	"20A MAX TOTAL 250V, 600VAC MAX"	NONE		NO	VERTICAL	
DRUBKITACCB5	"5A MAX. 250V, 600VAC MAX"	NONE		YES	VERTICAL	
DRUBGF120BF AC	"20A, 125V 60Hz, CLASS A"	GFBFST20GY	125VAC, 20A	NO	VERTICAL	
DRUB1221AC	20A, 120V-277V	CS1221GY	"120V-277V 20A"	NO	VERTICAL	
DRUB5462	20A, 250V	HBL5462GY	20A, 250V	NO	VERTICAL	
DRUB5350GY	"20A, 125VAC 60Hz, CLASS A"	GRFS350GY	"125VAC 20A"	NO	VERTICAL	

LIST OF PARTS

DESCRIPTION	MATERIAL	FINISH
COVER	PVC/ABS	GRAY
FACEPLATE	PVC/ABS	GRAY
PLUG	PVC/ABS	GRAY
TERMINAL BLOCK	30A 300V	
CIRCUIT BREAKER	5A	
DIN RAIL BASE	PVC/ABS	GRAY



CATALOG NO. #DRUB15 (NOT SHOWN TO SCALE)



- NOTES: (UNLESS OTHERWISE SPECIFIED)
1. DIMENSIONS ARE IN INCHES [mm]
 2. .XX TOLERANCES TO BE ±.03
 - 3 SUPPLIED WITH DUPLEX AND STYLELINE WALL PLATES.
 - 4 FOR USE WITH 35MM DIN RAIL.

REV	DESCRIPTION	APP	DATE
11	REVISED PER DCN 22024 SPN <i>DJP</i>	DJP	5/19/16
10	REDRAWN WITH EMBEDDED CAD MODEL WITH NO CHANGES TO PART GEOMETRY. PER DCN 21895 SPN	DJP	2/5/16

THE DESIGN AND DIMENSIONS OF THE PRODUCT SHOWN ON THIS DRAWING ARE SUBJECT TO CHANGE WITHOUT NOTICE

TITLE
CUSTOMER DRAWING 35MM DIN RAIL UTILITY BOX HORIZONTAL & VERTICAL MTG.

TOLERANCES UNLESS OTHERWISE SPECIFIED		WIRING DEVICE-KELLEMS HUBBELL INCORPORATED SHELTON, CT	
.XX = ± .01	.XXX = ± .005	DR. BY PAC	APP. BY SM
ANGLES = ± 2~		TR. BY	SCALE 1:1
		CHK. BY SM	DATE 6-26-01

DIMENSION SHEET FOR CAT. NO. **M-8540**
 SEE TABLE
 REPAIRABLE
 NON-REPAIRABLE
B
M-8540
11