

Straight Blade Devices
20A, 250V, 2 Pole, 3 Wire Grounding
HBL® Extra Heavy Duty, Specification
Grade, Duplex Receptacle

HUBBELL

Features

- Deep nylon body design delivers increased impact resistance
- One-piece brass integral ground strap
- Finder Groove Face
- Deep body design with circuit ID face

Ordering Information

Description	Device Color	UPC	Catalog Number
Deep body design with circuit ID face. Back and side wired.	Ivory	783585435527	HBL5462I

Listings

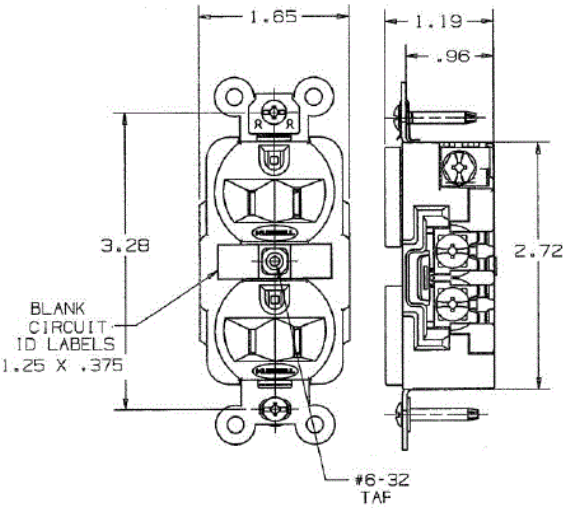
UL Listed to UL498 File No. E2186
Certified to CSA 22.2, No. 42 File 285
NEMA® WD-6 Compliant
NEMA® WD-6 Compliant

Specifications

Face	Nylon
Base	PBT
Power Contacts	.036 in. (.9) Brass
Wire Clamps	.031 in. (.8) Brass
Clamping Plate	Nickel plated brass
Terminal Screws	Plated brass
Mounting Strap	.050 in. (1.3) Brass
Automatic Self-grounding Clip	Stainless steel
Mounting Screws	Zinc plated steel

Performance

Electrical	
Current Interrupting	Certified for current interrupting at full rated current
Dielectric Voltage	Withstands 2,000V minimum
Mechanical	
Product Identification	Ratings are a permanent part of the device
Terminal Accommodation	#14-#10 AWG copper stranded or solid conductor only
Terminal Identification	Terminals identified in accordance with UL 498 and CSA
Environmental	
Flammability	Top: UL 94V-2, Base: UL 94V-0
Operating Temperatures	Maximum continuous 75°C; minimum -40°C (w/o impact)



Accessories

Wallplate or Weatherproof Cover Duplex Opening

Resources

Customer Use Drawing
eCatalog

