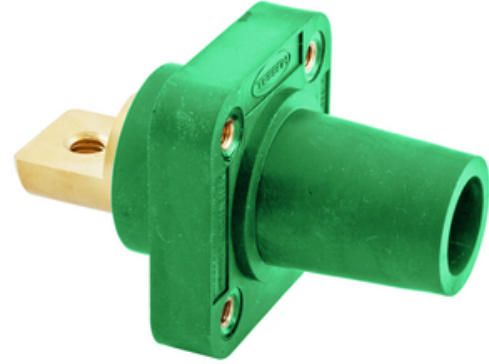




# Heavy Duty Products, Single Pole Devices, Industrial Grade, Female Bus Receptacle, 300/400A 600V AC/DC, Single Conductor, Green

By Bryant  
Catalog # [HBLFRBGN](#)



Heavy Duty Products, Single Pole Devices, Industrial Grade, Female Bus Receptacle, 300/400A 600V AC/DC, Single Conductor, Green

## Application

High Ampacity Connections

## General

Color	<ul style="list-style-type: none"><li>• Green</li><li>• Vert</li></ul>
Environmental Conditions	Indoor Dry Unless Protected By Additional Means
Item Type	Flanged Single
Material	Thermoplastic
Material - Mounting Hardware	Screw Mounting
Number Of Poles	1-Pole
Performance	<ul style="list-style-type: none"><li>• Electrical - Amperage Rating - 400A Maximum</li><li>• Electrical - Voltage Ratings - 600V AC Maximum</li><li>• 250V DC Maximum</li><li>• Environmental - Flammability - HB per UL94 or CSA 22.2. 0.17</li><li>• Mechanical - Product Identification - Ratings are a permanent part of device</li><li>• Mechanical - Terminal Accommodation - #4 to 4/0 AWG</li></ul>
Series	Series 16
Style	Bus Bar Mount Female
Type	Receptacle
UPC	783585192659

## Dimensions

Display Size Standard Sized Product

## Electrical Ratings

Amperage Rating	400 A
Connectivity	Screw Terminals
Current / Amperage Rating	400 A
Current Rating	400 A
Phase	Single Phase
Voltage Rating Description	600V AC/DC
Wattage	240000

## Conductor Related

Wire Size #4 AWG to #4/0 AWG

## Certifications and Compliance

Industry Standard(s)	<ul style="list-style-type: none"><li>• National Electric Code (NEC), ANSI/NFPA 70</li><li>• UL and cUL Listed</li><li>• UL Enclosure Types 3R, 4X, 12</li></ul>
Nema Rating	Non-NEMA

## Logistics

Carton Quantity 25

## Product Assets

[Catalog Page - Bryant L-6 Catalog page](#)  
[Catalogs - Bryant Full Line Catalog](#)  
[Literature - Single Pole Devices](#)



A proud member of the Hubbell Family.

©2023 Hubbell Incorporated. All rights reserved.  
BRY-HBLFRBGN-SPEC-EN | REV 7/2023