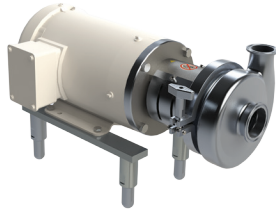


Dixon Sanitary Solutions for the Personal Care Market

dixonvalve.com • Customer Service: 800.789.1718

Personal Care

BC/BP Series Centrifugal Pumps



Applications:

- Unloading
- Transfer
- CIP supply

Materials:

- 316L
- Buna, EPDM, silicone, or FKM elastomers

Features:

- Impeller retainer or threaded impeller nut options
- Stamped volute
- Wet ends, motor pump units, and carts
- 3A certified and CIPable

Sizes:

- Inlet: 1½" to 6"
- Outlet: 1½" to 4"

JRZL Series Positive Displacement Pumps



Applications:

- Unloading
- Fluid transfer
- Metering
- CIP supply

Material:

- 316L

Features:

- Front loading seals
- Various rotor options
- 1"- 4" models: stainless steel gear box standard
- 3A certified and EHEDG certified
- 100% CIPable

Sizes:

- 1" to 10"

SSV Series Seat Valves



Applications:

- Isolation
- Diversion

Material:

- 316L

Features:

- Body machined from solid bar
- Field serviceable
- Various control top options
- 3A certified and CIPable

Sizes:

- 1" to 4"

Aseptic Seat Valves



Applications:

- Aseptic isolation
- Aseptic diversion
- Flow control

Material:

- 316L

Features:

- PTFE bellows
- Body machined from solid bar
- Manual or automated
- Various control top options
- 3A certified and CIPable

Sizes:

- 1" to 4"

Personal Care

ExD Series "The Hawk" High Efficiency Centrifugal Pump

**Applications:**

- CIP
- Fluid transfer
- Filling

Materials:

- 316L
- Buna, EPDM, silicone, or FKM elastomers

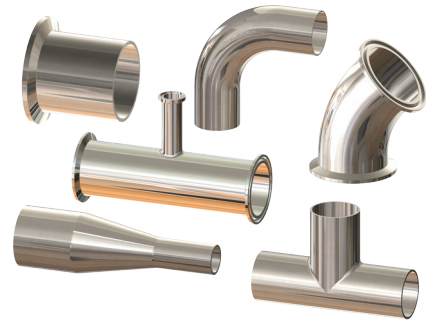
Features:

- Nut-less impeller and leak detection port
- Adjustable discharge port rotates 105° without disassembly of casing and front cover
- 3A certified and CIPable

Sizes:

- Inlet: 1" to 4"
- Outlet: 1" to 2½"

Bio-Pharmaceutical Fittings

**Material:**

- 316L

Finish:

- PL finish- SF1
- PM finish- SF4

Sizes:

- ½" to 6"

Bio-Check Sampling Valve

**Application:**

- Aseptic sampling

Material:

- 316L

Features:

- Valve body from solid bar
- Manual override on actuated valve
- 3A and EHEDG certified
- CIPable

Size:

- 13mm x 1.5mm

HSG Series Sight Glass

**Application:**

- View products and fluids

Materials:

- Body: 316L stainless steel
- Sight glass: polycarbonate
- Gaskets: PTFE, EPDM, or FKM

Features:

- Higher pressure ranges than other sight glasses
- Easy assembly and disassembly
- 3A certified and CIPable

Sizes:

- Single pin clamp: 1" - 6", EPDM or FKM gasket
- Bolted clamp: ½" - 6", PTFE gasket

Dixon®, founded in 1916, is a premier manufacturer and supplier of hose couplings, valves, dry-disconnects, swivels, and other fluid transfer and control products. The company's global reach includes a wide range of products for numerous industries including petroleum exploration, refining, transportation, chemical processing, food & beverage, steel, fire protection, construction, mining and manufacturing. Dixon®'s strategic objective is to create solutions that make products safer, leak-free, longer lasting, and always available.

dixonvalve.com • Customer Service: 800.789.1718

Dixon Sanitary

N25 W23040 Paul Road, Pewaukee, WI 53072

Fax: 800.789.4046

sanitarysales@dixonvalve.com

For complete catalog and literature downloads go to dixonvalve.com.

