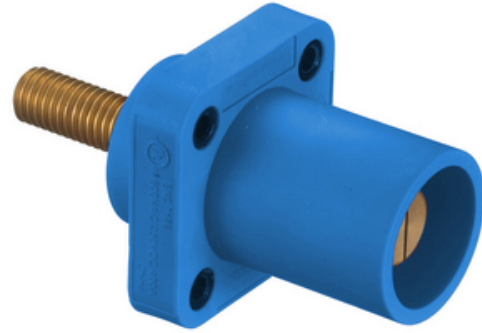




Heavy Duty Products, Single Pole Devices, Industrial Grade, Male, Receptacle, 300/400A, 600V AC/DC, Single Conductor, Threaded Stud, Blue

By Bryant
Catalog # [HBLMRSBL](#)



Heavy Duty Products, Single Pole Devices, Industrial Grade, Male, Receptacle, 300/400A, 600V AC/DC, Single Conductor, Threaded Stud, Blue

Application

High Ampacity Connections

General

Color	<ul style="list-style-type: none">• Blue• Bleu
Environmental Conditions	Indoor Dry Unless Protected By Additional Means
Item Type	Flanged Single
Material	Thermoplastic
Material - Mounting Hardware	Screw Mounting
Number Of Poles	1-Pole
Performance	<ul style="list-style-type: none">• Electrical - Amperage Rating - 400A Maximum• Electrical - Voltage Ratings - 600V AC Maximum• 250V DC Maximum• Environmental - Flammability - HB per UL94 or CSA 22.2. 0.17• Mechanical - Product Identification - Ratings are a permanent part of device• Mechanical - Terminal Accommodation - #4 to 4/0 AWG
Series	Series 16
Style	Stud Type, Through Hole Mounting, Male
Type	Receptacle
UPC	783585113005

Dimensions

Display Size Standard Sized Product

Electrical Ratings

Amperage Rating	400 A
Connectivity	Screw Terminals
Current / Amperage Rating	400 A
Current Rating	400 A
Phase	Single Phase
Voltage Rating Description	600V AC/DC
Wattage	240000

Conductor Related

Wire Size #4 AWG to #4/0 AWG

Certifications and Compliance

Industry Standard(s)	<ul style="list-style-type: none">• National Electric Code (NEC), ANSI/NFPA 70• UL and cUL Listed• UL Enclosure Types 3R, 4X, 12
Nema Rating	Non-NEMA

Logistics

Carton Quantity 25

Product Assets

[Catalog Page - Bryant L-5 Catalog page](#)
[Catalogs - Bryant Full Line Catalog](#)
[Literature - Single Pole Devices](#)



A proud member of the Hubbell Family.

©2023 Hubbell Incorporated. All rights reserved.
BRY-HBLMRSBL-SPEC-EN | REV 7/2023