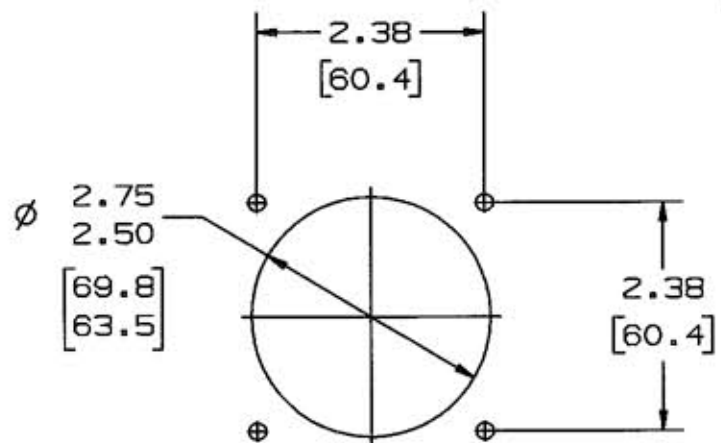
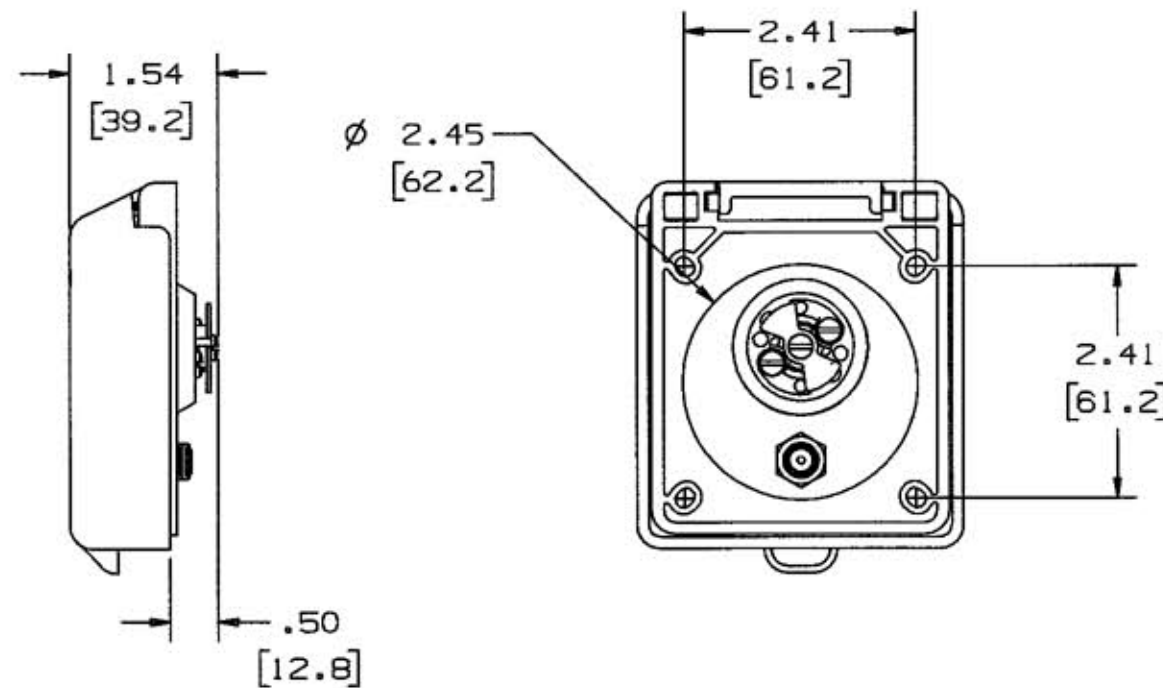
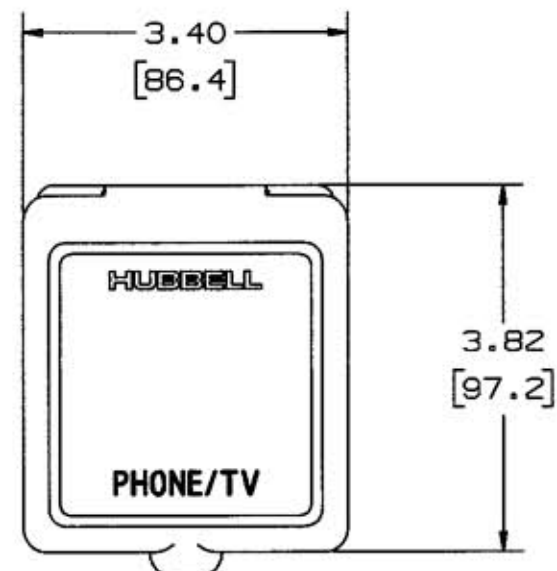


M-7460 2



CUTOUT OPENING

NOTE: INCHES
[MM]

LIST OF PARTS

DESCRIPTION	MATERIAL	FINISH
COVER	WEATHERABLE POLYMER	
THREADED BODY	FLAME RETARDANT GLASS REINFORCED POLYESTER	
INTERIOR	NYLON	
BLADES	BRASS	NICKEL PLATE
INTERIOR SCREWS	STAINLESS STEEL	
MOUNTING SCREWS	STAINLESS STEEL	
STRAIN RELIEF	NYLON	
STRAIN RELIEF SCREWS	STAINLESS STEEL	
GASKETS	EDPM FOAM RUBBER	

2	ADDED MM TO DIMS.; REMOVED TOL. FROM DIMS.; ADDED 1.54 & .50; Ø 2.45 WAS Ø 2.46 PER DCN #8685 RCM	TCM	11/16/01
1	"X" REMOVED; LAST X-REVISION WAS X-0 PER DCN #4139 . JMN	JLW	7/12/96
SYM	REVISIONS	APP	DATE

THE DESIGN AND DIMENSIONS OF THE PRODUCT SHOWN ON THIS DRAWING ARE SUBJECT TO CHANGE WITHOUT NOTICE

TITLE
NON-METALLIC
SHORE PHONE/TV INLET

TOLERANCES UNLESS OTHERWISE SPECIFIED	WIRING DEVICE-KELLEMS HUBBELL INCORPORATED BRIDGEPORT, CT	
FRACTIONS ± 1/64	DR. BY JMN	APP. BY JLW
DECIMALS ± .005	TR. BY	SCALE .5:1
ANGLES ± 2°	CHK'D BY JLW	DATE 7/12/96