

Dixon™ Butt Weld to Tube Cam and Groove

C

Application:

- designed to be butt welded to standard sanitary tubing

Feature:

- 316 stainless steel investment casting

**adapter x butt weld to tube end**

Size	316 Stainless Steel	
	Part #	Price/E
1"	RE100BT	\$130.00
1½"	RE150BT	147.30
2"	RE200BT	169.15
3"	RE300BT	357.00

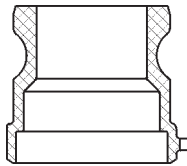
Boss-Lock™ coupler x butt weld to tube end

Size	316 Stainless Steel	
	Part #	Price/E
1"	RC100BT	\$195.00
1½"	RC150BT	240.00
2"	RC200BT	260.00
3"	RC300BT	425.00

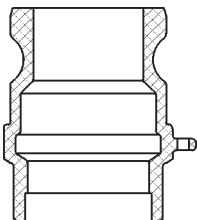
Dixon™ Adapters for Welding

Feature:

- not all configurations are stocked
- line drawings are for reference only, consult Dixon™ for specific dimensions
- final weld preparation, as with all weld fittings, is the responsibility of the welder

socket weld to schedule 40 pipe

Size	Bore	356T6 Aluminum		316 Stainless Steel	
		Part #	Price/E	Part #	Price/E
¾"	1.065	---	---	75AWSPSS	\$104.20
1"	1.330	---	---	100AWSPSS	97.95
1½"	1.915	150AWSPAL	\$63.00	150AWSPSS	117.00
2"	2.390	200AWSPAL	46.35	200AWSPSS	110.00
3"	3.530	300AWSPAL	58.60	300AWSPSS	196.35
4"	4.530	400AWSPAL	80.00	400AWSPSS	298.00
5"	5.593	500AWSPAL	123.75	500AWSPSS	450.00
6"	6.655	600AWSPAL	135.00	600AWSPSS	474.00
8" DIX	8.711	800AWSPAL ¹	474.00	---	---
8" BL	8.711	801AWSPAL ¹	453.00	---	---

butt weld to schedule 40 pipe / socket weld to nominal OD tubing

Size	Bore	356T6 Aluminum		316 Stainless Steel	
		Part #	Price/E	Part #	Price/E
¾"	.765	---	---	75AWBPSTSS	\$104.20
1"	1.015	---	---	100AWBPSTSS	97.95
1½"	1.515	150AWBPSTAL	\$60.00	150AWBPSTSS	117.00
2"	2.015	200AWBPSTAL	39.15	200AWBPSTSS	110.00
3"	3.015	300AWBPSTAL	58.60	300AWBPSTSS	196.35
4"	4.015	400AWBPSTAL	80.00	400AWBPSTSS	298.00
5"	5.015	500AWBPSTAL	123.75	500AWBPSTSS	450.00
6"	6.020	600AWBPSTAL	142.00	600AWBPSTSS	474.00
8" BL	8.035	801AWBPSTAL ¹	440.00	---	---



¹ Dixon™ and Boss-Lock™ cam and groove couplings do not interchange in the 8" size.