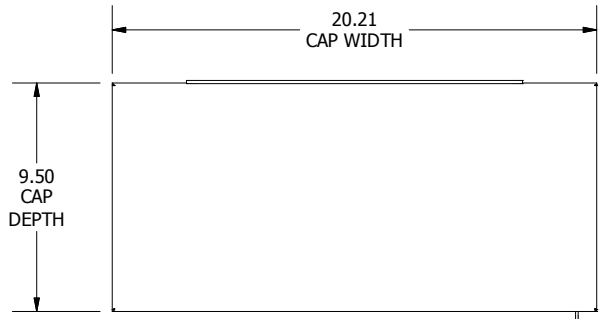
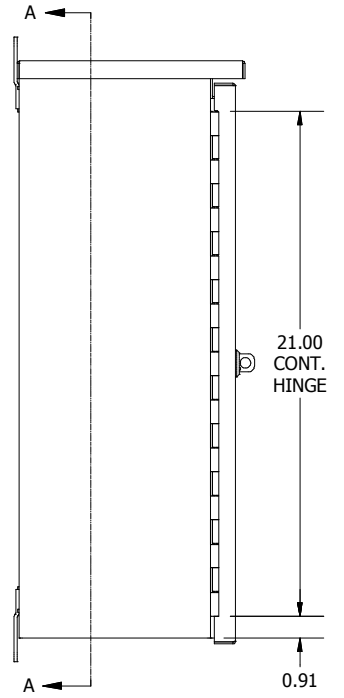
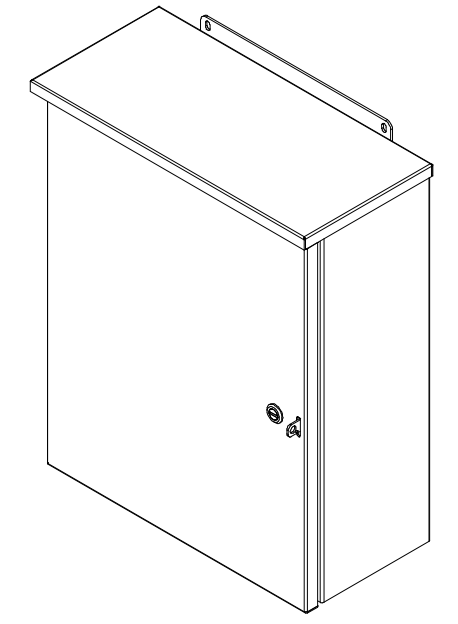


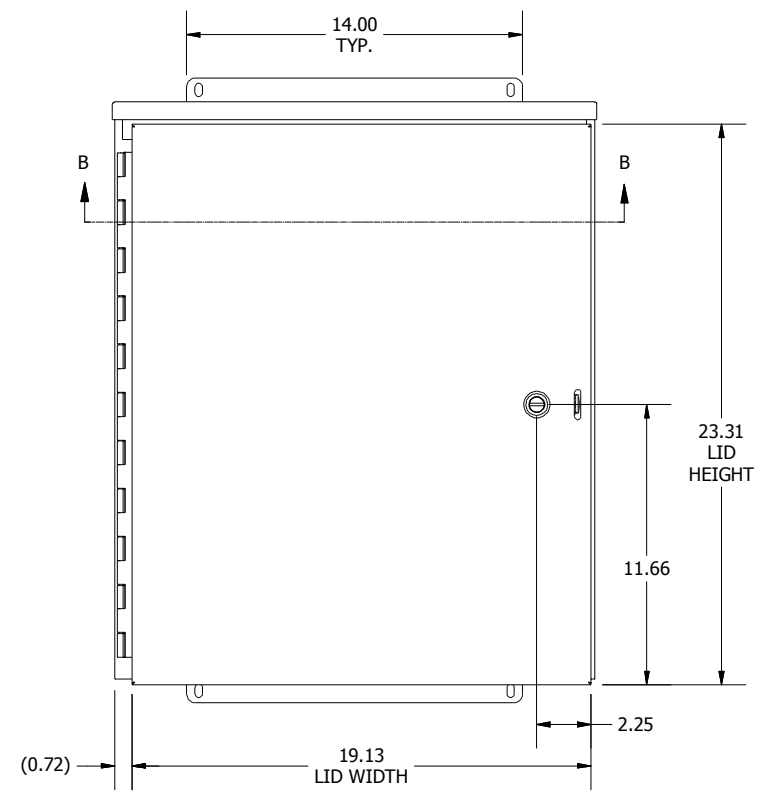
REVISION HISTORY			
REV	DESCRIPTION	BY	DATE
A	ECO#: HFW161018-02	VD	02/06/2017



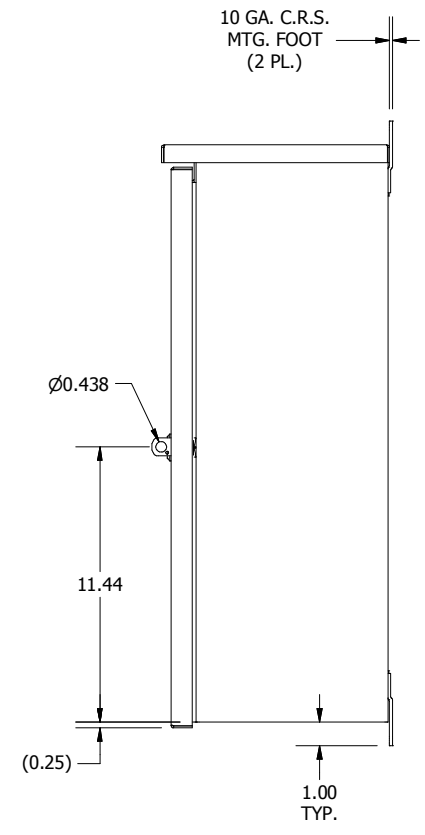
TOP VIEW



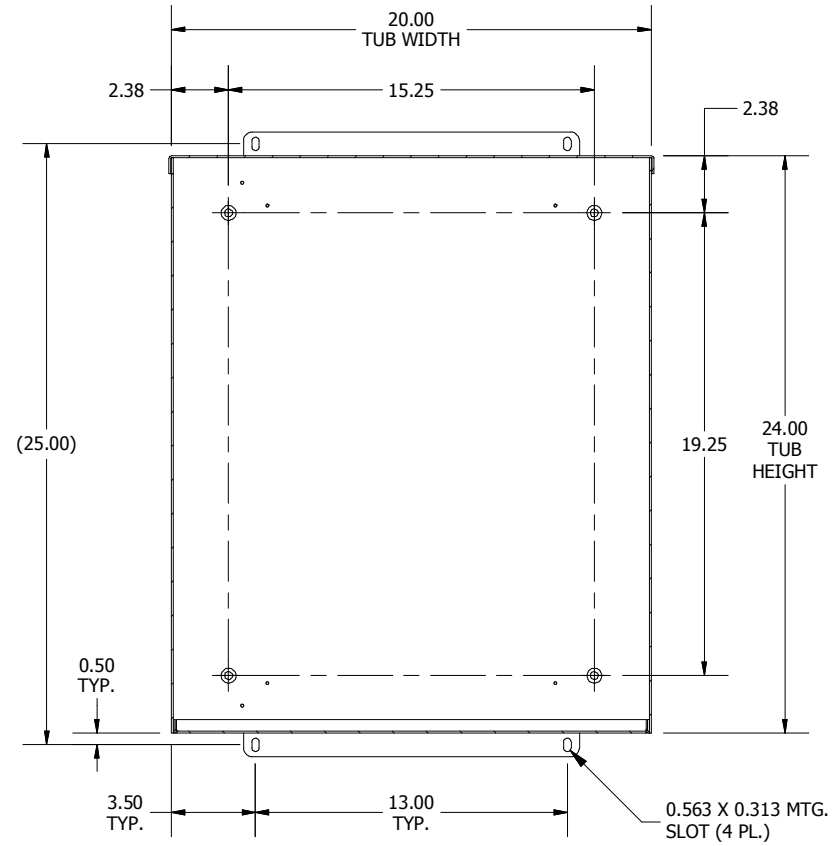
LEFT SIDE VIEW



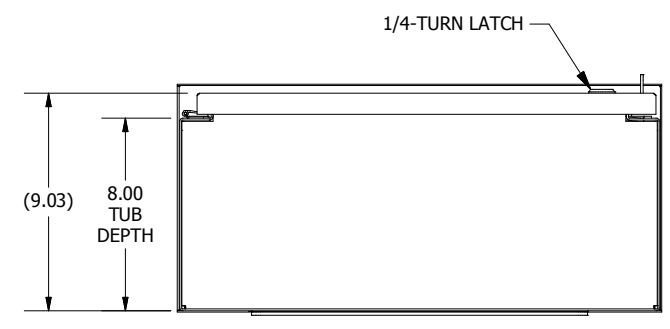
FRONT VIEW



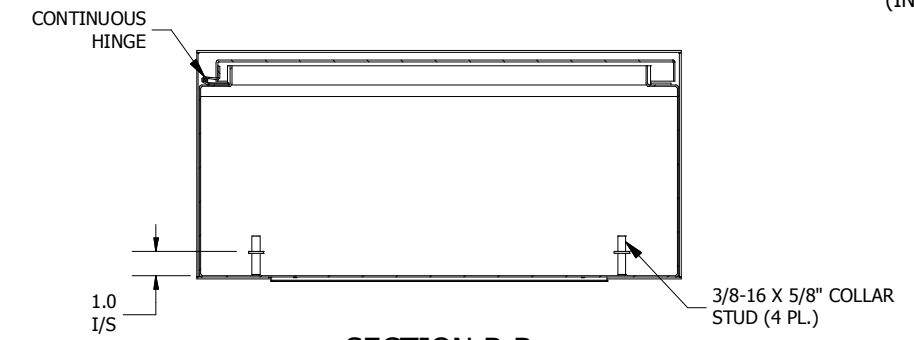
RIGHT SIDE VIEW



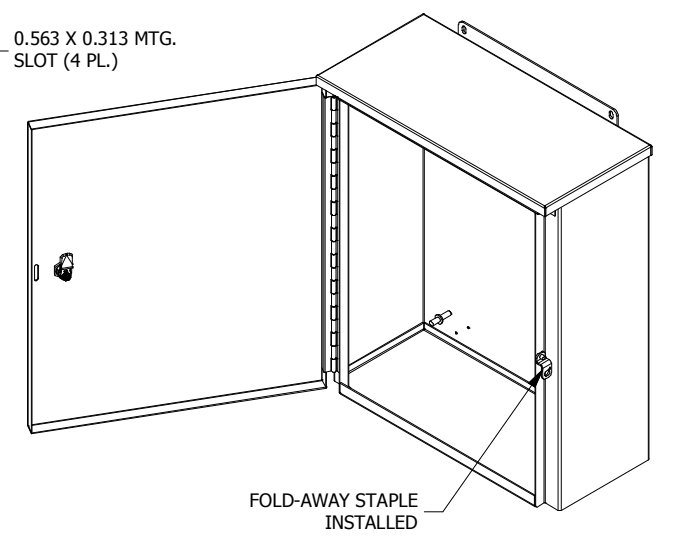
**SECTION A-A
(INSIDE BACK OF ENCL.)**



BOTTOM VIEW




**SECTION B-B
(INSIDE TOP OF ENCL.)**



**FOLD-AWAY STAPLE
INSTALLED**

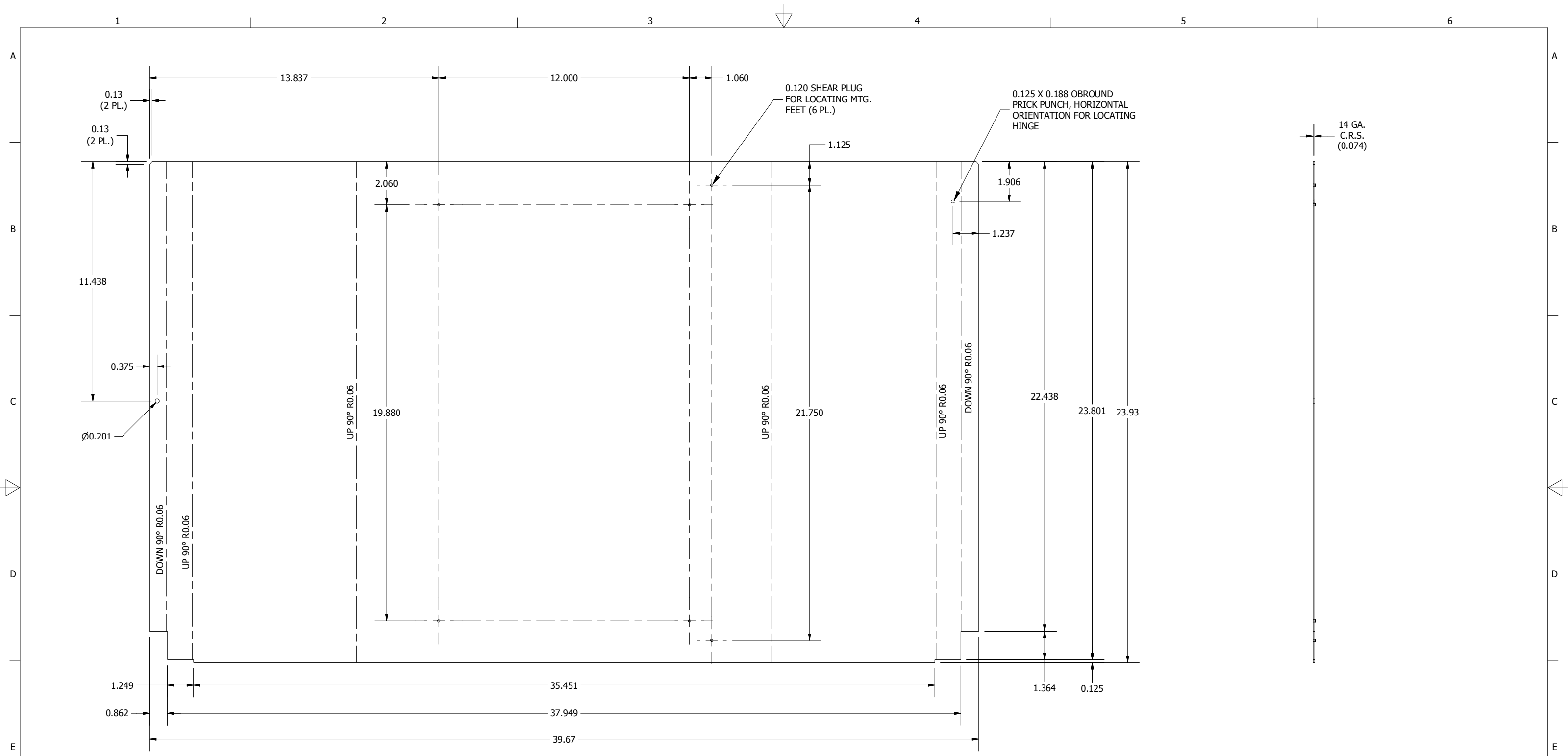
- NOTES:**
1. ALL DIMENSIONS ARE FROM OUTSIDE UNLESS OTHERWISE NOTED.
 2. ENCLOSURE IS FABRICATED FROM 14 GA. CARBON STEEL.
 3. COLLAR STUDS ARE PROVIDED FOR MOUNTING OPTIONAL SUB PANEL.
 4. ENCLOSURE IS WELDED TOGETHER.
 5. FINISH: ANSI-61 GRAY TEXTURE POLYESTER POWDER (INTERIOR/EXTERIOR).
 6. ENCLOSURE IS RATED UL TYPE 3R.

DIMENSIONS ARE IN INCHES (MM). TOLERANCES UNLESS OTHERWISE SPECIFIED ARE AS FOLLOWS:
 .X = ±.06 (1.6)
 .XX = ±.031 (.8)
 .XXX = ±.016 (.25)
 Ø = ±.005
 ANGLE TOL ±1°


WIEGMANN
 FREEBURG, ILLINOIS, USA

-NOTICE- THIS DRAWING IS THE PROPERTY OF WIEGMANN, A DIVISION OF HUBBELL INCORPORATED. IT IS LOANED TO YOU AND MUST NOT BE USED IN ANY WAY DETRIMENTAL TO THE INTEREST OF WIEGMANN.


PART NUMBER: RHC242008	MATERIAL: SEE NOTE	SCALE: NONE	CHK'D DATE: 6/26/2014
DESCRIPTION: RHC, NEMA 3R ENCL., CS, 24X20X8		DRAWN BY: PS	CREATED ON: 6/27/2014
		CHK'D BY: VR	DWG. NO. HWDRC242008_1
		SHEET 1 OF 9	REV. A



BLR FLAT PATTERN VIEW

FLAT SIDE VIEW

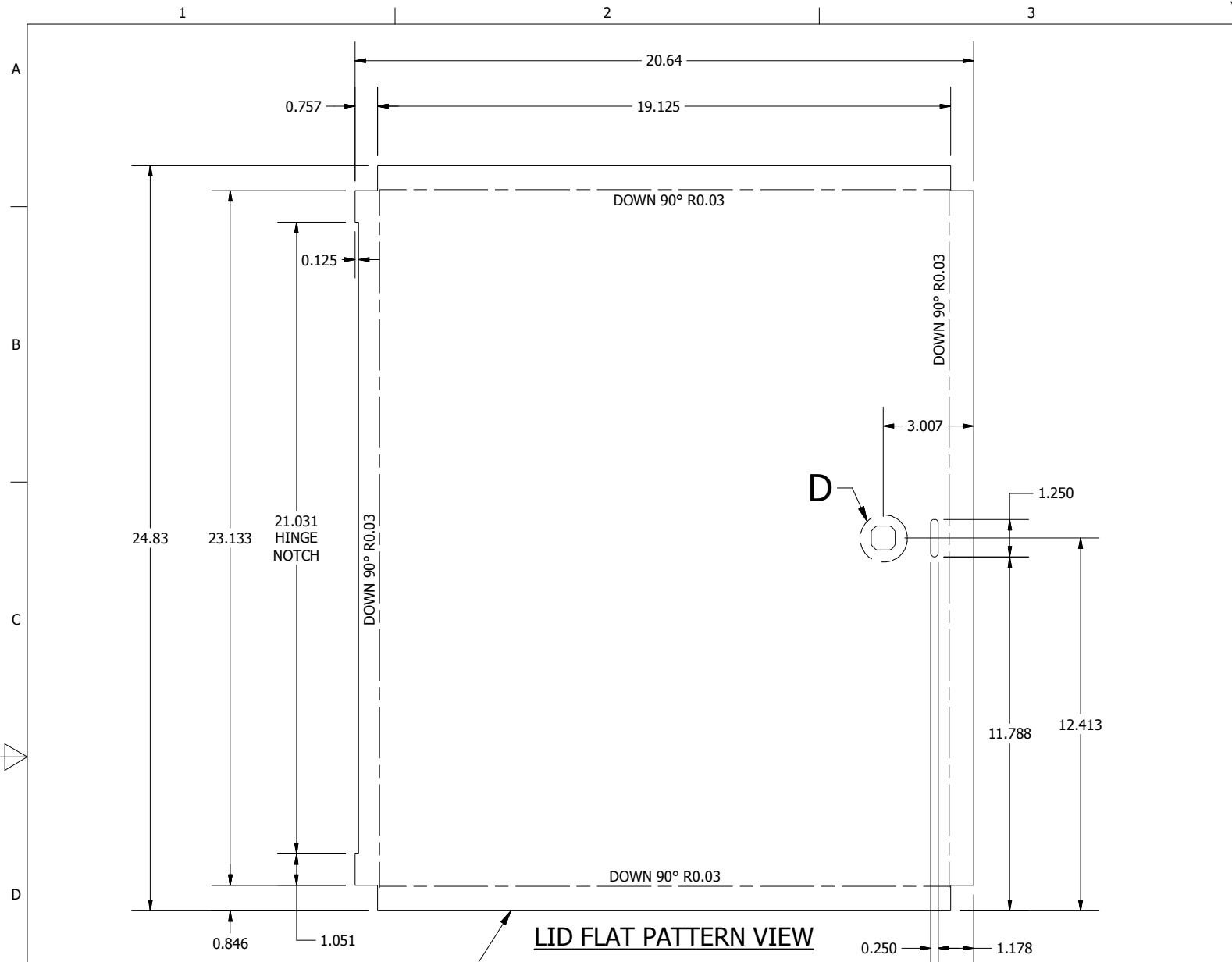
DIMENSIONS ARE IN INCHES (MM). TOLERANCES UNLESS OTHERWISE SPECIFIED ARE AS FOLLOWS:
 .X = ±.06 (1.6)
 .XX = ±.031 (.8)
 .XXX = ±.016 (.25)
 Ø = ±.005
 ANGLE TOL ± 1'


WIEGMANN
 FREEBURG, ILLINOIS, USA

-NOTICE- THIS DRAWING IS THE PROPERTY OF WIEGMANN, A DIVISION OF HUBBELL INCORPORATED. IT IS LOANED TO YOU AND MUST NOT BE USED IN ANY WAY DETRIMENTAL TO THE INTEREST OF WIEGMANN.

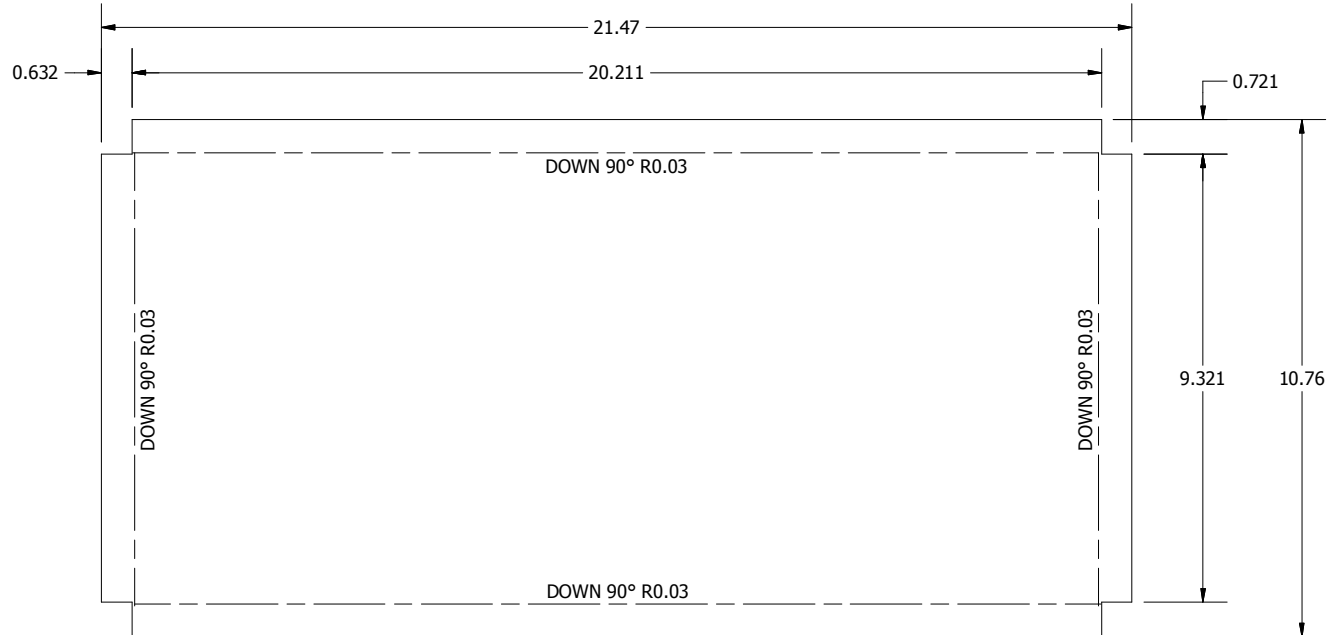
PART NUMBER: RHC242008BLR	MATERIAL: SEE NOTE	SCALE: NONE	CHK'D DATE: 6/26/2014
DESCRIPTION: RHC, BLR, MEDIUM, CS, 24X20X8		DRAWN BY: PS	CREATED ON: 6/27/2014
		CHK'D BY: VR	DWG. NO. HWDRHC242008_2.1
		SHEET 2 OF 9	REV. A

SHEET 2 OF 9		REV. A
--------------	--	--------



TOP & BOTTOM FLANGES ARE TO OVERLAP SIDE FLANGES

LID FLAT PATTERN VIEW



FRONT & BACK FLANGES ARE TO OVERLAP SIDE FLANGES

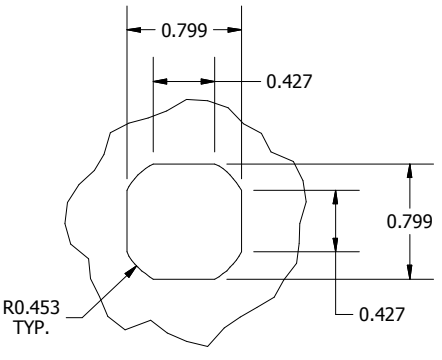
CAP FLAT PATTERN VIEW



FLAT SIDE VIEW



FLAT SIDE VIEW



DETAIL D
(LATCH PUNCHING DETAIL)

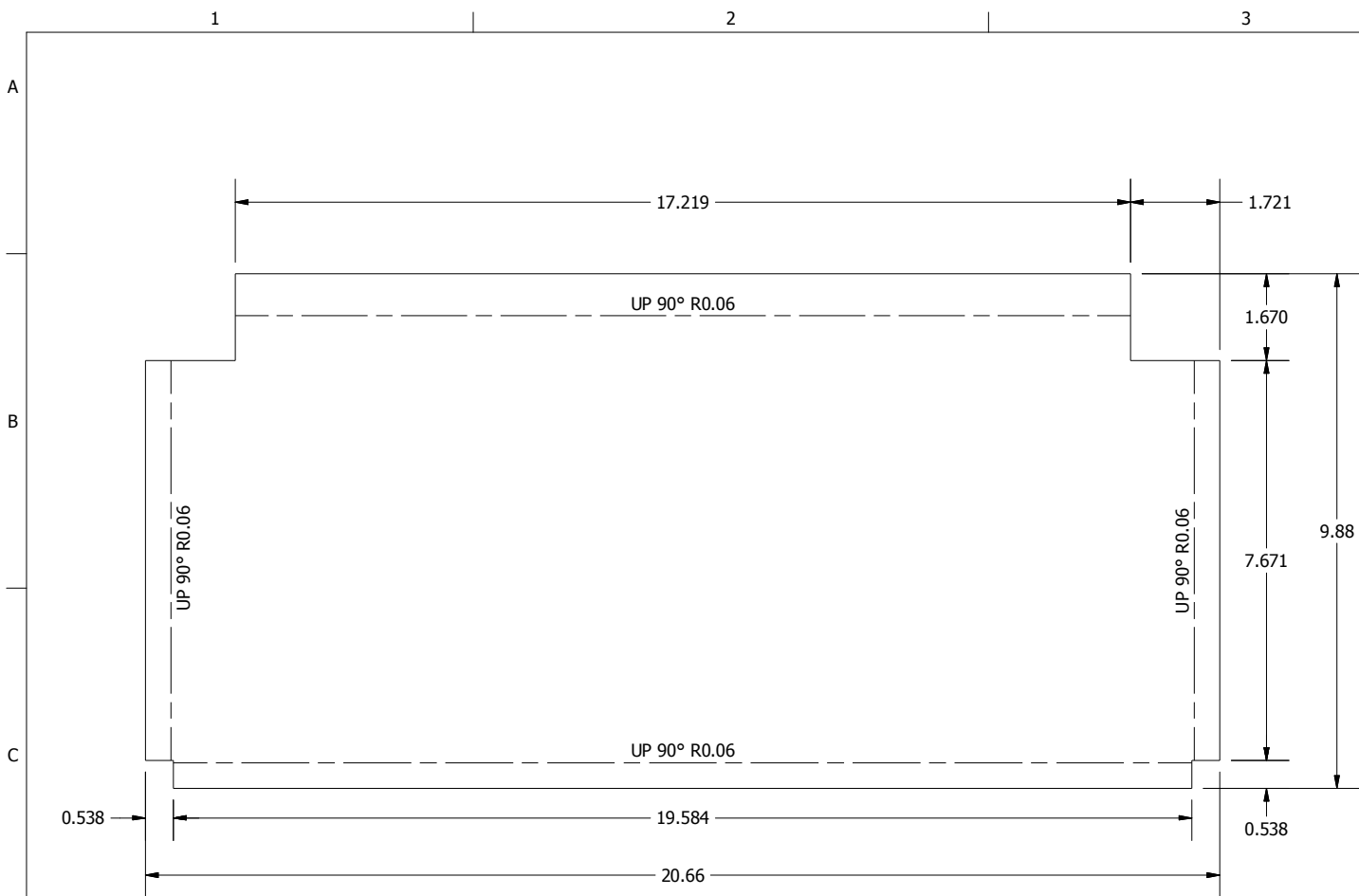
DIMENSIONS ARE IN INCHES (MM). TOLERANCES UNLESS OTHERWISE SPECIFIED ARE AS FOLLOWS:
 .X = ±.06 (1.6)
 .XX = ±.031 (.8)
 .XXX = ±.016 (.25)
 Ø = ±.005
 ANGLE TOL ±1°



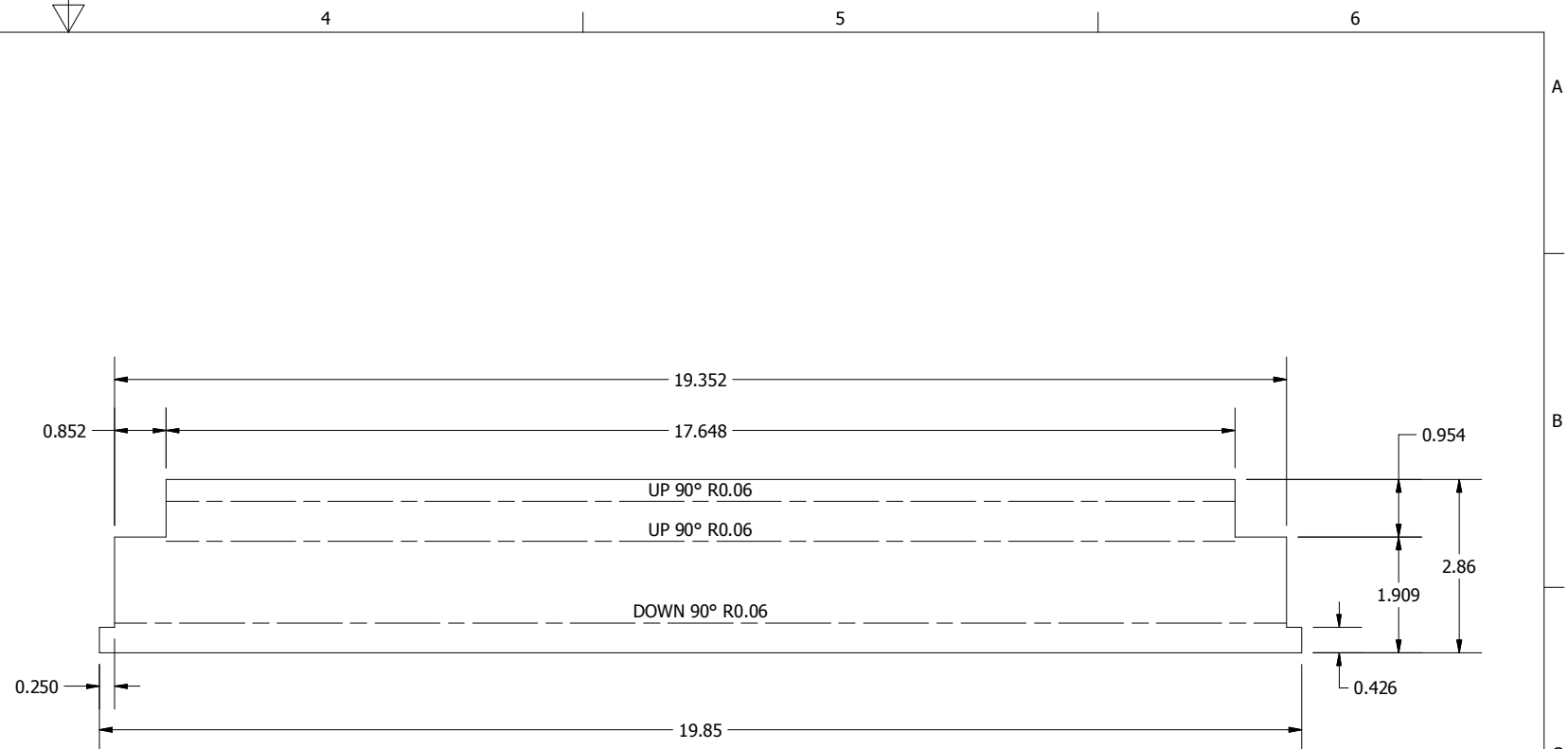
WIEGMANN
 FREEBURG, ILLINOIS, USA

—NOTICE— THIS DRAWING IS THE PROPERTY OF WIEGMANN, A DIVISION OF HUBBELL INCORPORATED. IT IS LOANED TO YOU AND MUST NOT BE USED IN ANY WAY DETRIMENTAL TO THE INTEREST OF WIEGMANN.

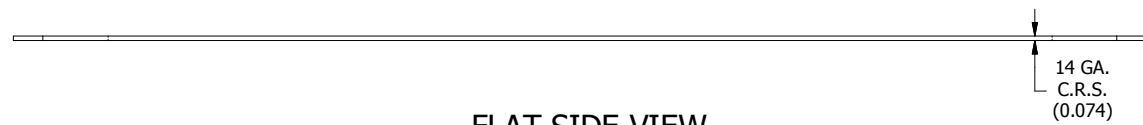
PART NUMBER: RHC2420LID	MATERIAL: SEE NOTE	SCALE: NONE	CHK'D DATE: 6/26/2014
DESCRIPTION: RHC, LID, CS, NEMA 3R, 24X20		DRAWN BY: PS	CREATED ON: 6/27/2014
		CHK'D BY: VR	DWG. NO. HWDRHC242008_2.2
		REV. A	
		SHEET 3 OF 9	



BOTTOM ENDWALL FLAT PATTERN VIEW



TOP ENDWALL FLAT PATTERN VIEW



FLAT SIDE VIEW



FLAT SIDE VIEW

DIMENSIONS ARE IN INCHES (MM). TOLERANCES UNLESS OTHERWISE SPECIFIED ARE AS FOLLOWS:
 .X = ±.06 (1.6)
 .XX = ±.031 (.8)
 .XXX = ±.016 (.25)
 Ø = ±.005
 ANGLE TOL ± 1'



WIEGMANN
 FREEBURG, ILLINOIS, USA

—NOTICE— THIS DRAWING IS THE PROPERTY OF WIEGMANN, A DIVISION OF HUBBELL INCORPORATED. IT IS LOANED TO YOU AND MUST NOT BE USED IN ANY WAY DETRIMENTAL TO THE INTEREST OF WIEGMANN.

PART NUMBER:
RHC2008BTM

MATERIAL:
SEE NOTE

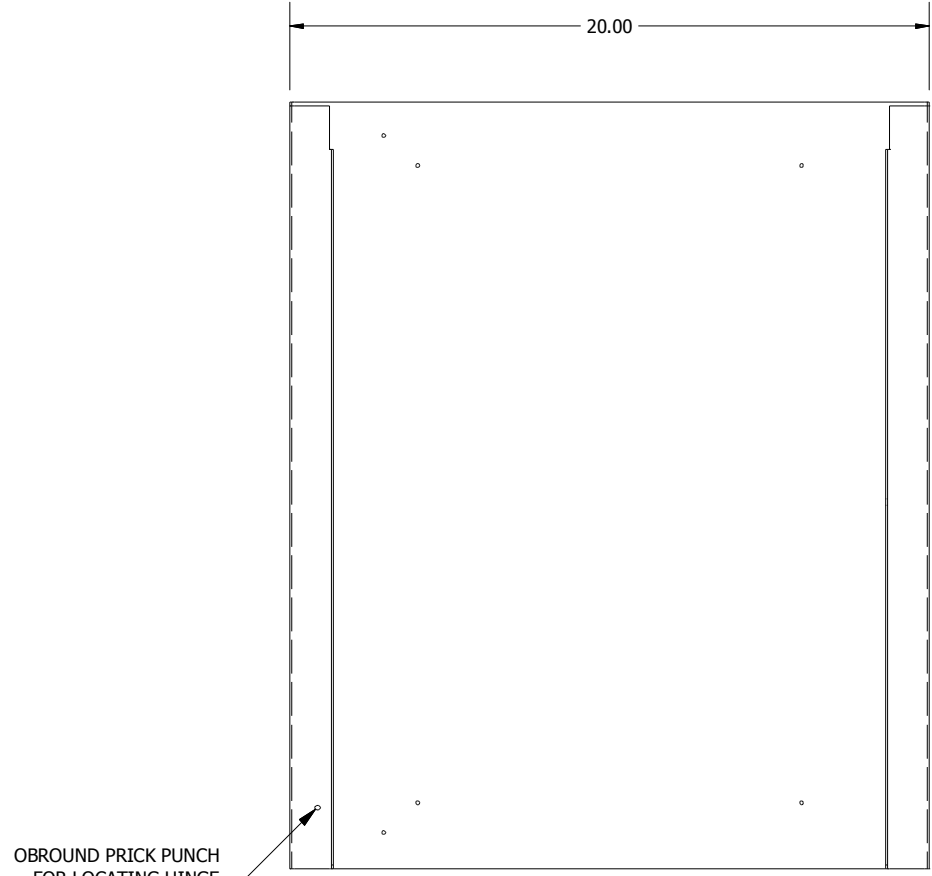
SCALE: NONE
 DRAWN BY: PS
 CHK'D BY: VR

CHK'D DATE: 6/26/2014
 CREATED ON: 6/27/2014

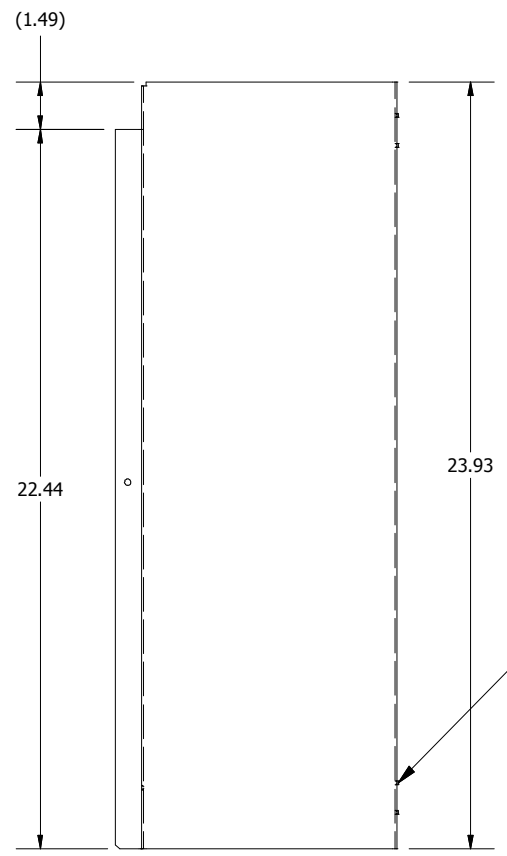
DESCRIPTION:
RHC, BTM, CS, NEMA 3R, 20X8

DWG. NO. HWD RHC242008_2.3
 REV. A

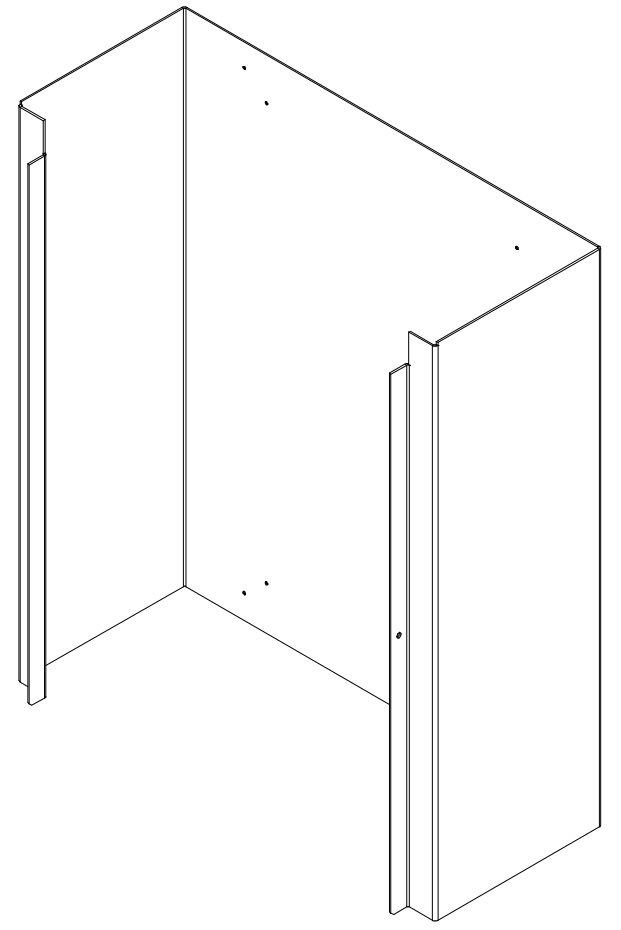
SHEET 4 OF 9




BLR FRONT VIEW



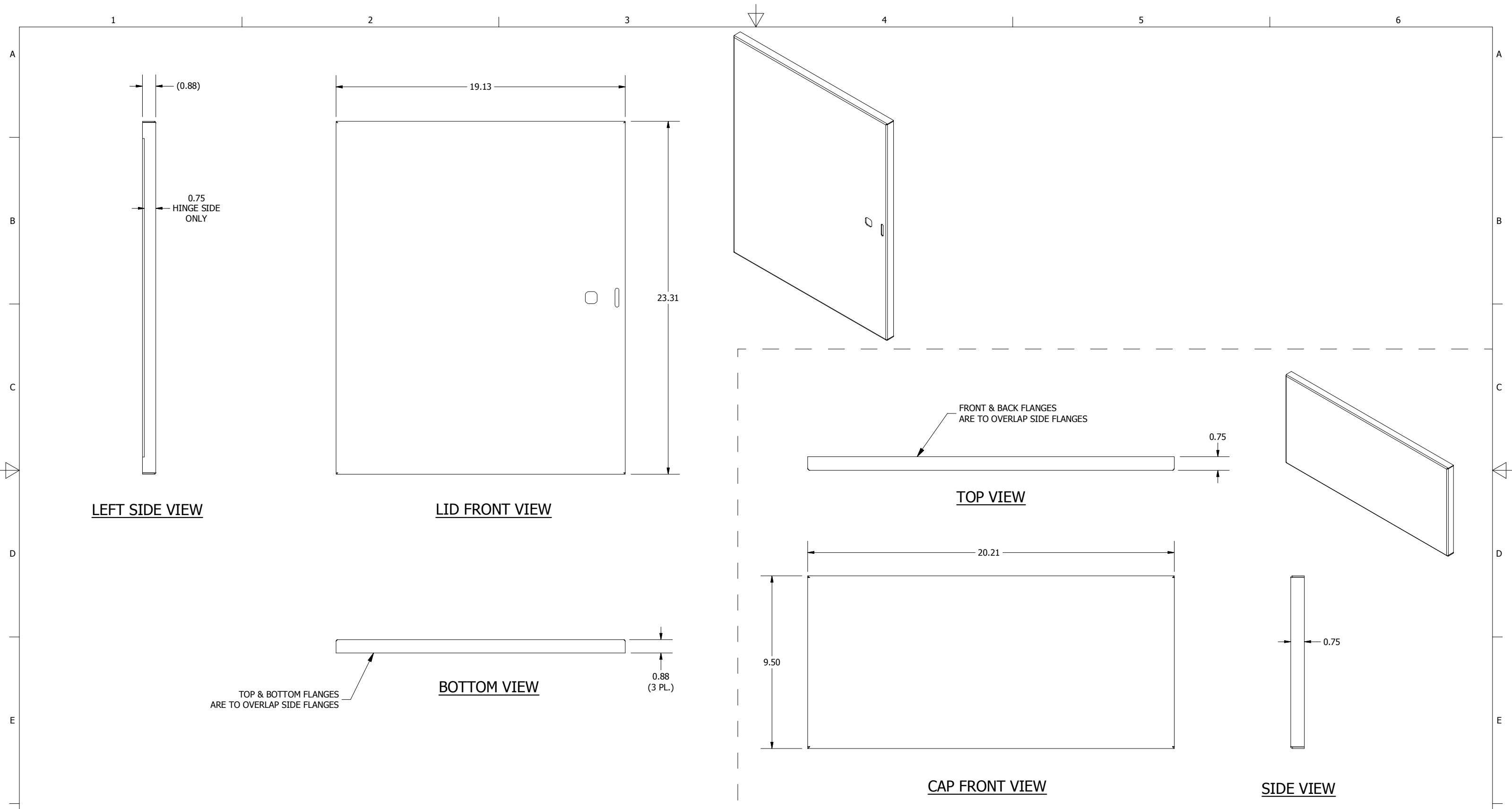
SIDE VIEW



BOTTOM VIEW

DIMENSIONS ARE IN INCHES (MM). TOLERANCES UNLESS OTHERWISE SPECIFIED ARE AS FOLLOWS: .X = ±.06 (1.6) .XX = ±.031 (.8) .XXX = ±.016 (.25) Ø = ±.005 ANGLE TOL ±1°	 WIEGMANN FREEBURG, ILLINOIS, USA	PART NUMBER: RHC242008BLR	MATERIAL: SEE NOTE	SCALE: NONE	CHK'D DATE: 6/26/2014
		DESCRIPTION: RHC, BLR, MEDIUM, CS, 24X20X8		DRAWN BY: PS	CREATED ON: 6/27/2014
				CHK'D BY: VR	DWG. NO. HWD RHC242008_3.1
				SHEET 5 OF 9	

-NOTICE- THIS DRAWING IS THE PROPERTY OF WIEGMANN, A DIVISION OF HUBBELL INCORPORATED. IT IS LOANED TO YOU AND MUST NOT BE USED IN ANY WAY DETRIMENTAL TO THE INTEREST OF WIEGMANN.



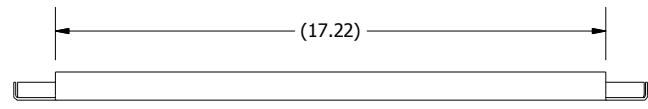
DIMENSIONS ARE IN INCHES (MM). TOLERANCES UNLESS OTHERWISE SPECIFIED ARE AS FOLLOWS:
 .X = ±.06 (1.6)
 .XX = ±.031 (.8)
 .XXX = ±.016 (.25)
 Ø = ±.005
 ANGLE TOL ±1'



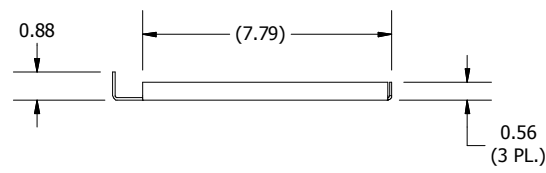
WIEGMANN
 FREEBURG, ILLINOIS, USA

—NOTICE— THIS DRAWING IS THE PROPERTY OF WIEGMANN, A DIVISION OF HUBBELL INCORPORATED. IT IS LOANED TO YOU AND MUST NOT BE USED IN ANY WAY DETRIMENTAL TO THE INTEREST OF WIEGMANN.

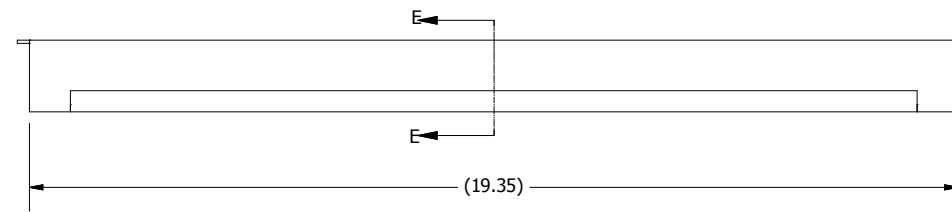
PART NUMBER: RHC2420LID	MATERIAL: SEE NOTE	SCALE: NONE	CHK'D DATE: 6/26/2014
DESCRIPTION: RHC, LID, CS, NEMA 3R, 24X20		DRAWN BY: PS	CREATED ON: 6/27/2014
		CHK'D BY: VR	DWG. NO. HWDRHC242008_3.2
		SHEET 6 OF 9	REV. A



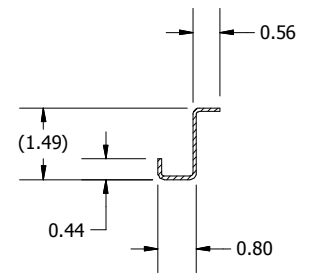
BOTTOM ENDWALL FRONT VIEW



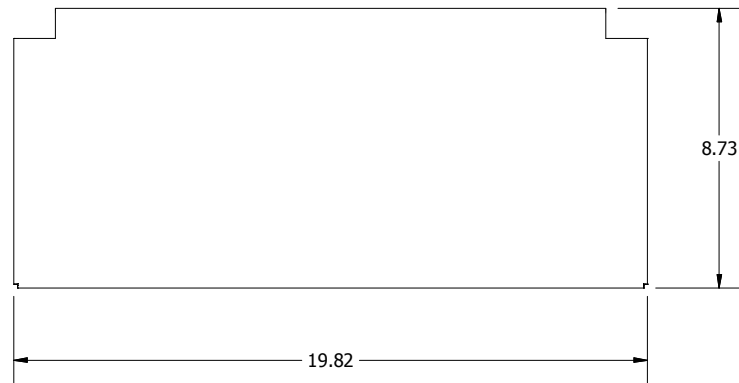
SIDE VIEW



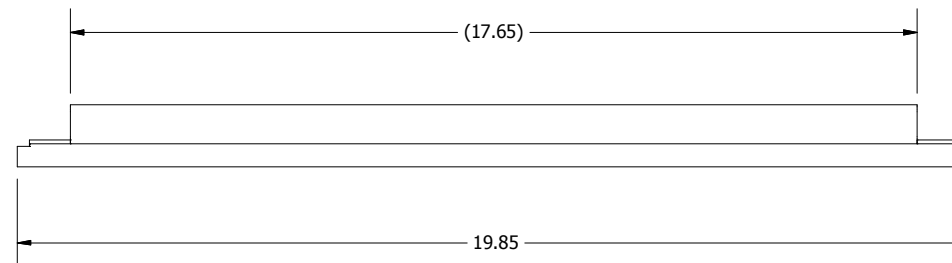
TOP ENDWALL FRONT VIEW



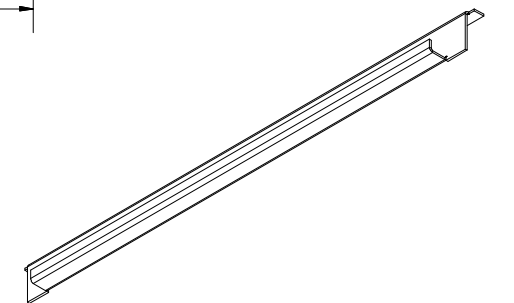
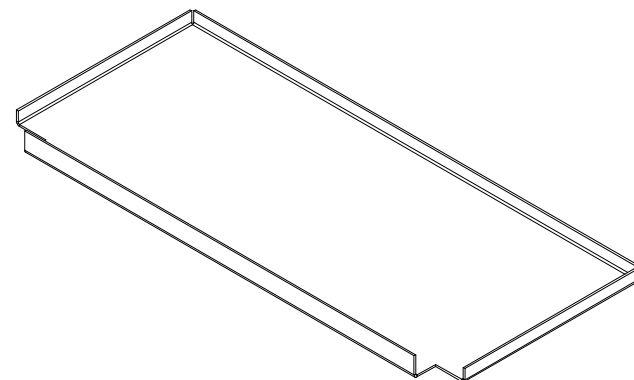
SECTION E-E



BOTTOM VIEW



BOTTOM VIEW



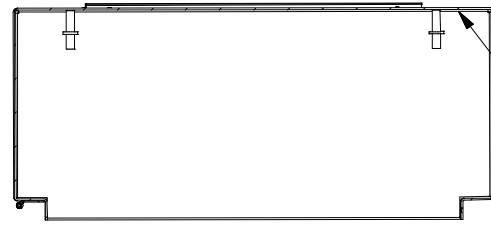
DIMENSIONS ARE IN INCHES (MM). TOLERANCES UNLESS OTHERWISE SPECIFIED ARE AS FOLLOWS:
 .X = ±.06 (1.6)
 .XX = ±.031 (.8)
 .XXX = ±.016 (.25)
 Ø = ±.005
 ANGLE TOL ± 1'



WIEGMANN
 FREEBURG, ILLINOIS, USA

-NOTICE- THIS DRAWING IS THE PROPERTY OF WIEGMANN, A DIVISION OF HUBBELL INCORPORATED. IT IS LOANED TO YOU AND MUST NOT BE USED IN ANY WAY DETRIMENTAL TO THE INTEREST OF WIEGMANN.

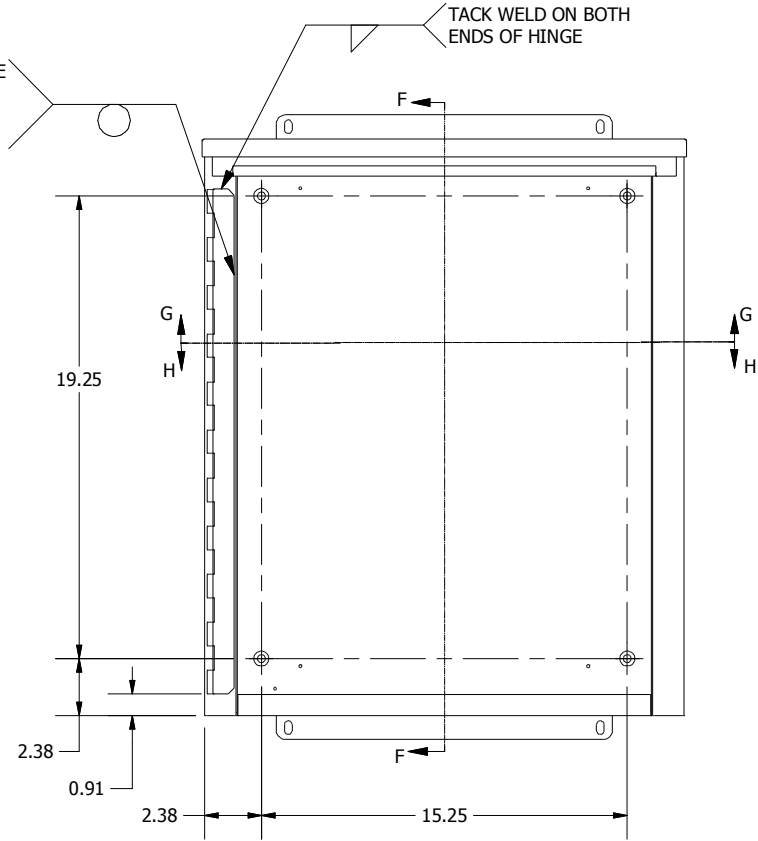
PART NUMBER: RHC2008BTM	MATERIAL: SEE NOTE	SCALE: NONE	CHK'D DATE: 6/26/2014
DESCRIPTION: RHC, BTM, CS, NEMA 3R, 20X8		DRAWN BY: PS	CREATED ON: 6/27/2014
		CHK'D BY: VR	DWG. NO. HWDRHC242008_3.3
		SHEET 7 OF 9	REV. A



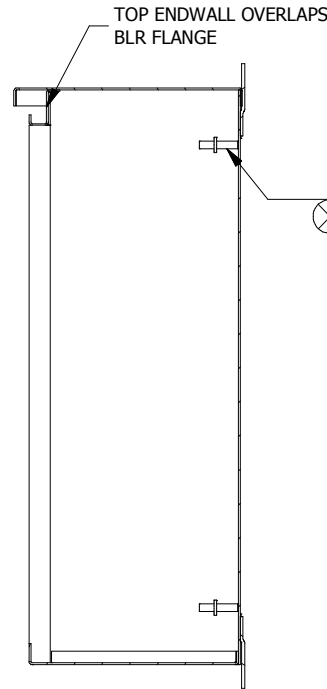
SECTION H-H

TACK WELD BOTTOM ENDWALL TO INSIDE OF BLR ON SIDES EVENLY & THROUGHOUT

SPOT WELD HINGE TO TUB FLANGE EVENLY & THROUGHOUT



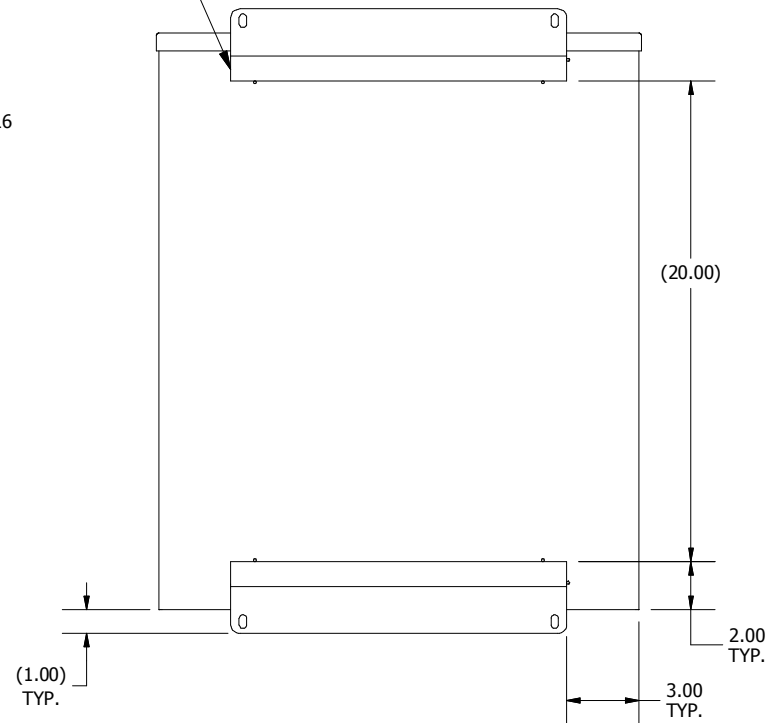
TUB WELD FRONT VIEW



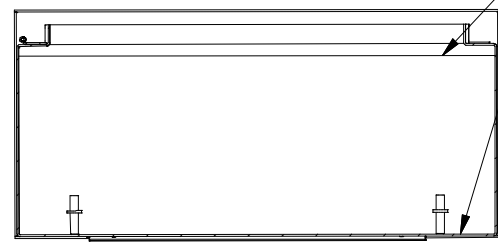
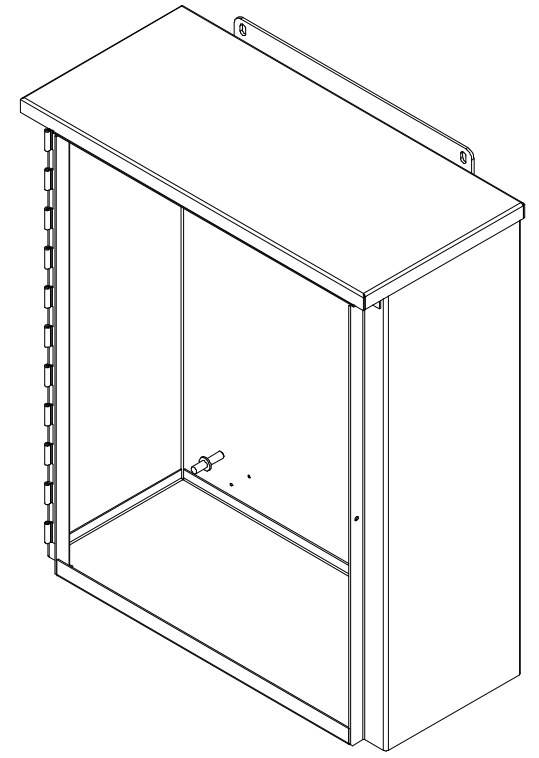
SECTION F-F

TACK WELD MTG. FOOT ON THREE SIDES TO BACK OF TUB EVENLY & THROUGHOUT (2 PL.)

CD WELD 3/8-16 COLLAR STUD (4 PL.)



REAR VIEW



SECTION G-G

TACK WELD CAP TO ALL BLR & TOP ENDWALL FLANGES EVENLY & THROUGHOUT

DIMENSIONS ARE IN INCHES (MM). TOLERANCES UNLESS OTHERWISE SPECIFIED ARE AS FOLLOWS:
 .X = ±.06 (1.6)
 .XX = ±.031 (.8)
 .XXX = ±.016 (.25)
 Ø = ±.005
 ANGLE TOL ±1°



WIEGMANN
 FREEBURG, ILLINOIS, USA

—NOTICE— THIS DRAWING IS THE PROPERTY OF WIEGMANN, A DIVISION OF HUBBELL INCORPORATED. IT IS LOANED TO YOU AND MUST NOT BE USED IN ANY WAY DETRIMENTAL TO THE INTEREST OF WIEGMANN.

PART NUMBER:
RHC242008

MATERIAL:
SEE NOTE

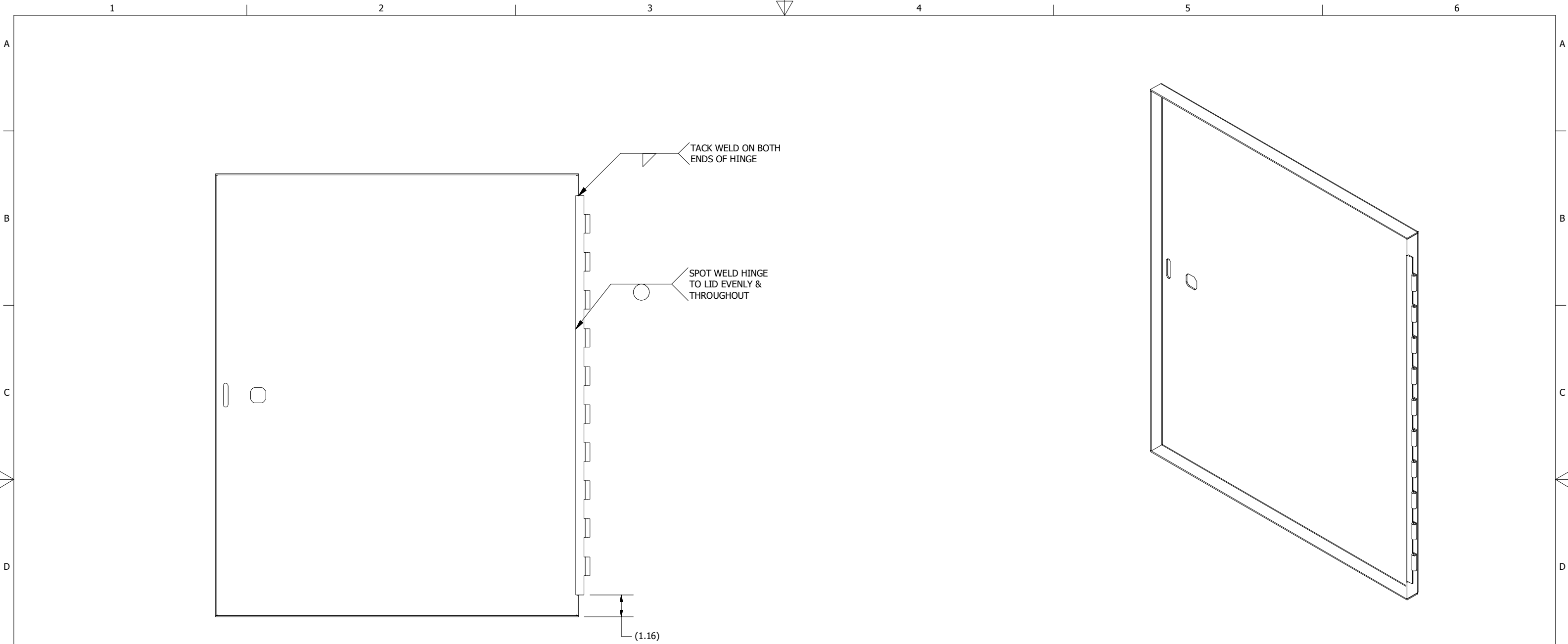
SCALE: NONE
 DRAWN BY: PS
 CHK'D BY: VR

CHK'D DATE: 6/26/2014
 CREATED ON: 6/27/2014

DESCRIPTION:
RHC, NEMA 3R ENCL., CS, 24X20X8

DWG. NO. HWRHC242008_4.1
 REV. A

SHEET 8 OF 9



LID WELD INSIDE VIEW

DIMENSIONS ARE IN INCHES (MM). TOLERANCES UNLESS OTHERWISE SPECIFIED ARE AS FOLLOWS:
 .X = ±.06 (1.6)
 .XX = ±.031 (.8)
 .XXX = ±.016 (.25)
 Ø = ±.005
 ANGLE TOL ±1°



WIEGMANN
 FREEBURG, ILLINOIS, USA

-NOTICE- THIS DRAWING IS THE PROPERTY OF WIEGMANN, A DIVISION OF HUBBELL INCORPORATED. IT IS LOANED TO YOU AND MUST NOT BE USED IN ANY WAY DETRIMENTAL TO THE INTEREST OF WIEGMANN.

PART NUMBER: RHC242008	MATERIAL: SEE NOTE	SCALE: NONE	CHK'D DATE: 6/26/2014
		DRAWN BY: PS	CREATED ON: 6/27/2014
DESCRIPTION: RHC, NEMA 3R ENCL., CS, 24X20X8		CHK'D BY: VR	DWG. NO. HWRHC242008_4.2
		REV. A	
		SHEET 9 OF 9	