

Series 1 Miniature Water Regulator

Application:

Designed for use with deionized water and potable water systems. Plastic and metal components in contact with fluid are approved by the National Sanitation Foundation (NSF) or meet Food and Drug Administration (FDA) recommendations for use in potable water systems.

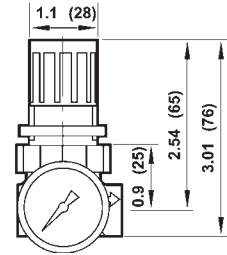


Features:

- inlet pressure: **150 PSI** at ambient temperature (70°F)
- non-relieving type
- supplied with GC620 gauge
- food grade elastomers

Port Size	Flow (GPM)	with Gauge	
		Part #	Price/E
1/4"	1.75	R91-221RG	\$84.75

SCFM ratings at 100 PSIG.



Series 1 Water Regulators

Application:

Used in water systems to reduce and maintain pressure at a nearly constant level despite changes in the inlet pressure and changes in downstream flow requirements.

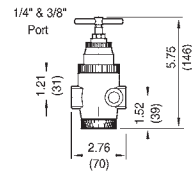
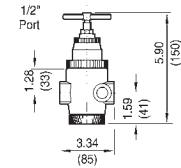


Features:

- pressure range 5-125 PSI
- inlet pressure: **400 PSI** at ambient temperature (70°F)
- T-handle adjustment
- brass body and aluminum bonnet
- non-relieving type
- gauge port is full-flow and can be used as an outlet port
- supplied with GC230 gauge

Port Size	Flow (SCFM)	with Gauge	
		Part #	Price/E
1/4"	5	R43-201RG	\$261.20
3/8"	5	R43-301RG	314.20
1/2"	10	R43-406RG	359.90

SCFM ratings at 100 PSIG.



Series 1 Water Regulators

Application:

Balanced valve minimizes effects of the inlet pressure variations on outlet pressure.

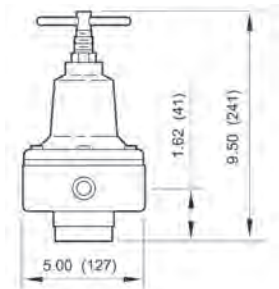
Features:

- inlet pressure: **400 PSI**
- T-handle adjustment
- non-relieving type
- body, valve and bottom plug are brass, bonnet is aluminum and steel
- elastomers are nitrile
- temperature range:
 - water service: **35° to 200°F** (2° to 93°C)
 - air service: **-30° to 200°F** (-34° to 93°C)



Port Size	Flow (SCFM)	without Gauge	
		Part #	Price/E
3/4"	27.5	11-009-065	\$1216.40
1"	27.5	11-009-081	1228.00

SCFM ratings given at 100 PSIG inlet pressure.



See pages 256-257 for regulator accessories.



FRL's are designed for air service only, unless otherwise indicated.