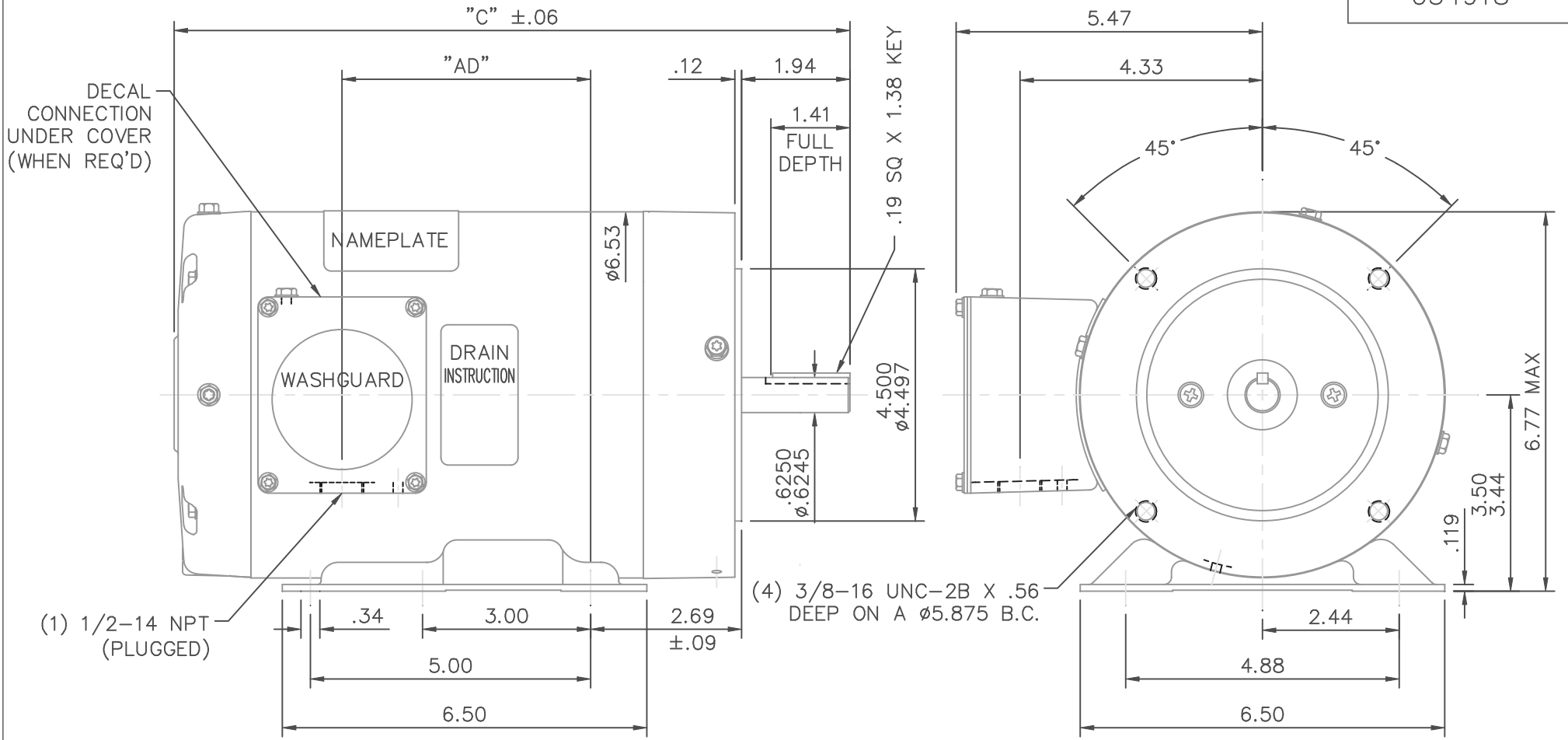


034918



SPECIAL FEATURES:

- 1) SHAFT SEALS & V-RING
- 2) DRAIN HOLES IN ENDBELLS & CONDUIT BOX
- 3) STAINLESS STEEL SHAFT, HARDWARE & NAMEPLATE
- 4) GASKETS THROUGHOUT

DASH NO.	"C" ±.06		"AD"	
	INCHES	DEC.	INCHES	DEC.
700	12.06	.06	4.44	.04
750	12.56	.06	4.94	.04
800	13.06	.06	5.44	.04

MAXIMUM FACE RUNOUT .004 T.I.R.
 MAXIMUM PILOT ECCENTRICITY .004 T.I.R.
 PERMISSIBLE SHAFT RUNOUT .002 T.I.R.



ELECTRIC MOTORS
 GEARMOTORS
 AND DRIVES

DRAWN	RDW	02/18/02
CHK		
APPD	KMM	02/18/02
SCALE		3=8
REF		
FMF		
PREV		

NO.	REVISION	BY & DATE	CHK	TOLERANCES UNLESS SPECIFIED	
				ANG	±1/2'
04	SHAFT END E.B. WAS 021255-19 PER ECO 04-1702	LST 9/17/04	.X		±.1
03	MOVED NP PER ENGR	RDW 5/9/03	SW	.XX	±.03
02	L.E. ENDBELL WAS 021209.27	KMM 8/19/02		.XXX	±.005
01	NAMEPLATE WAS ABOVE COND. BOX, PER ECR 71985	RLW 6/20/02	BJB	.XXXX	±.0005

TITLE	OUTLINE - 56HC FRAME	
	TENV - RIGID "C"	
MAT'L.	WASHGUARD	
FINISH		

THIS DRAWING IN DESIGN AND DETAIL IS OUR PROPERTY AND MUST NOT BE USED EXCEPT IN CONNECTION WITH OUR WORK ALL RIGHTS OF DESIGN AND INVENTION ARE RESERVED THIS IS AN ELECTRONICALLY GENERATED DOCUMENT - DO NOT SCALE THIS PRINT	RFP	02/18/02	CAD FILE	034918	SIZE	DRAWING NO.	REV.
	DIST				A	034918	04