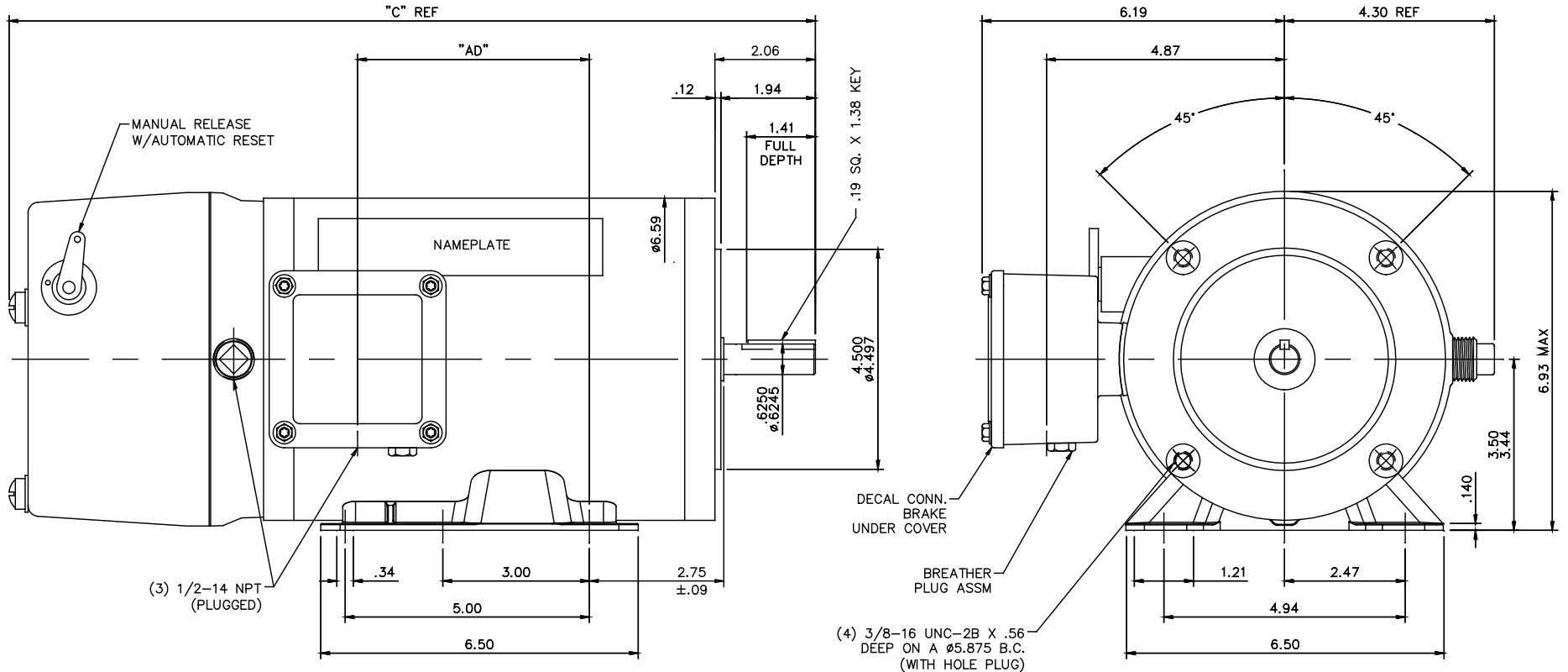


607-0286



DASH NO.	"C"	"AD"
800	16.51	4.74
850	17.01	5.24
900	17.51	5.74
950	18.01	6.24

MAXIMUM FACE RUNOUT TO BE .004 T.I.R.
 MAXIMUM PILOT ECCENTRICITY .004 T.I.R.
 PERMISSIBLE SHAFT RUNOUT .002 T.I.R.

ALL-STAINLESS
 VITON CONDUIT BOX & COVER GASKETS
 VITON O-RINGS IN ENDBELL RABBETS, UNDER THRU BOLT HEADS & BRAKE LEAD HOLE
 VITON SHAFT SEAL
 BREATHER PLUG IN CONDUIT BOX
 ALL STAINLESS STEEL CONSTRUCTION

ORACLE REV	0
------------	---

TOLERANCES UNLESS SPECIFIED		REGAL™ Regal Beloit America, Inc.		DRAWN	JD 12/22/2016
DEC.	INCHES	CHK		CHK	
.X	±.1			APPD	
.XX	±.03			SCALE	1=2
.XXX	±.005			REF	028582
.XXXX	±.0005			FMF	119785.00
NO.	REVISION	BY & DATE	CHK	ANG	±1/2'
			RFP	CAD FILE	607-0286
			DIST	SIZE	DRAWING NO.
				B	607-0286
					REV.
					A

THIS DRAWING IN DESIGN AND DETAIL IS OUR PROPERTY AND MUST NOT BE USED EXCEPT IN CONNECTION WITH OUR WORK. ALL RIGHTS OF DESIGN AND INVENTION ARE RESERVED. THIS IS AN ELECTRONICALLY GENERATED DOCUMENT - DO NOT SCALE THIS PRINT