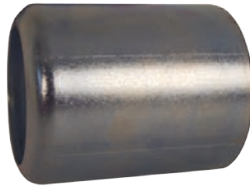


Internal Expansion Ferrules



Hose ID	Hose OD		Ferrule ID	Plated Carbon Steel		Hose ID	Hose OD		Ferrule ID	Plated Carbon Steel	
	From:	To:		Part #	Price/E		From:	To:		Part #	Price/E
1"	1-24/64"	1-28/64"	1-7/16"	IXF16-1	\$40.50	3"	3-32/64"	3-36/64"	3-9/16"	IXF48-T	\$75.30
	1-28/64"	1-32/64"	1-1/2"	IXF16-2	40.50		3-36/64"	3-40/64"	3-5/8"	IXF48-U	75.30
	1-32/64"	1-36/64"	1-9/16"	IXF16-3	40.50		3-40/64"	3-44/64"	3-11/16"	IXF48-V	75.30
1¼"	1-40/64"	1-44/64"	1-11/16"	IXF20-Z	38.00	3-44/64"	3-48/64"	3-3/4"	IXF48-W	75.30	
	1-44/64"	1-48/64"	1-3/4"	IXF20-1	38.00	3-48/64"	3-52/64"	3-13/16"	IXF48-X	76.40	
	1-48/64"	1-52/64"	1-13/16"	IXF20-2	38.00	3-52/64"	3-56/64"	3-7/8"	IXF48-Y	75.30	
	1-52/64"	1-56/64"	1-7/8"	IXF20-3	38.00	3-56/64"	3-60/64"	3-15/16"	IXF48-Z	75.30	
	1-56/64"	1-60/64"	1-15/16"	IXF20-4	38.00	3-60/64"	4"	4"	IXF48-1	81.25	
	1-60/64"	2"	2"	IXF20-5	38.00	4"	4-4/64"	4-1/16"	IXF48-2	81.25	
1½"	2"	2-4/64"	2-1/16"	IXF20-6	38.00	4-4/64"	4-8/64"	4-1/8"	IXF48-3¹	81.25	
	1-56/64"	1-60/64"	1-15/16"	IXF24-Z	37.65	4-8/64"	4-12/64"	4-3/16"	IXF48-4¹	82.00	
	1-60/64"	2"	2"	IXF24-1	37.65	4-12/64"	4-16/64"	4-1/4"	IXF48-5¹	81.25	
	2"	2-4/64"	2-1/16"	IXF24-2	37.65	4-36/64"	4-40/64"	4-5/8"	IXF64-T	108.00	
	2-4/64"	2-8/64"	2-1/8"	IXF24-3	37.65	4-40/64"	4-44/64"	4-11/16"	IXF64-U	108.00	
	2-8/64"	2-12/64"	2-3/16"	IXF24-4	37.65	4-44/64"	4-48/64"	4-3/4"	IXF64-V	108.00	
	2-12/64"	2-16/64"	2-1/4"	IXF24-5	37.65	4-48/64"	4-52/64"	4-13/16"	IXF64-W	108.00	
	2-16/64"	2-20/64"	2-5/16"	IXF24-6	37.65	4-52/64"	4-56/64"	4-7/8"	IXF64-X	108.00	
2-20/64"	2-24/64"	2-3/8"	IXF24-7	37.65	4-56/64"	4-60/64"	4-15/16"	IXF64-Y	108.00		
2"	2-32/64"	2-36/64"	2-9/16"	IXF32-Y	41.00	4-60/64"	5"	5"	IXF64-Z	108.00	
	2-36/64"	2-40/64"	2-5/8"	IXF32-Z	41.00	5"	5-4/64"	5-1/16"	IXF64-1	108.00	
	2-40/64"	2-44/64"	2-11/16"	IXF32-1	40.15	5-4/64"	5-8/64"	5-1/8"	IXF64-2¹	108.00	
	2-44/64"	2-48/64"	2-3/4"	IXF32-2	40.15	5-8/64"	5-12/64"	5-3/16"	IXF64-3¹	108.00	
	2-48/64"	2-52/64"	2-13/16"	IXF32-3	40.15	5-12/64"	5-16/64"	5-1/4"	IXF64-4¹	108.00	
	2-52/64"	2-56/64"	2-7/8"	IXF32-4	40.15	5-16/64"	5-20/64"	5-5/16"	IXF64-5¹	108.00	
	2-56/64"	2-60/64"	2-15/16"	IXF32-5	40.15	6-40/64"	6-44/64"	6-11/16"	IXF96-1	POR	
	2-60/64"	3"	3"	IXF32-6	40.15	6-44/64"	6-48/64"	6-3/4"	IXF96-2	POR	
2½"	3"	3-4/64"	3-1/16"	IXF32-7	40.15	6-46/64"	6-50/64"	6-25/32"	IXF96-3	POR	
	3"	3-4/64"	3-1/16"	IXF40-1	59.50	6-48/64"	6-52/64"	6-13/16"	IXF96-4	POR	
	3-4/64"	3-8/64"	3-1/8"	IXF40-2	59.50	6-52/64"	6-56/64"	6-7/8"	IXF96-5	POR	
	3-8/64"	3-12/64"	3-3/16"	IXF40-3	59.50	6-56/64"	6-60/64"	6-15/16"	IXF96-6	POR	
	3-12/64"	3-16/64"	3-1/4"	IXF40-4	59.50	6-60/64"	7"	7"	IXF96-7	POR	
	3-16/64"	3-20/64"	3-5/16"	IXF40-5	59.50	7"	7-4/64"	7-1/16"	IXF96-8	POR	
	3-20/64"	3-24/64"	3-3/8"	IXF40-6	59.50	7-4/64"	7-8/64"	7-1/8"	IXF96-9	POR	
	3-24/64"	3-28/64"	3-7/16"	IXF40-7	59.50	7-8/64"	7-12/64"	7-3/16"	IXF96-10	POR	
3-28/64"	3-32/64"	3-1/2"	IXF40-8	59.50	7-12/64"	7-16/64"	7-1/4"	IXF96-11	POR		
3"	3-16/64"	3-20/64"	3-5/16"			7-16/64"	7-20/64"	7-5/16"	IXF96-12	POR	
	3-20/64"	3-24/64"	3-3/8"			7-18/64"	7-22/64"	7-11/32"	IXF96-13	POR	
	3-24/64"	3-28/64"	3-7/16"			7-20/64"	7-24/64"	7-3/8"	IXF96-14	POR	
	3-28/64"	3-32/64"	3-1/2"								

M

¹ for hoses using ferrule sizes IXF48-3 thru IXF48-5 and IXF64-2 thru IXF64-5, consult Dixon™ for working pressures