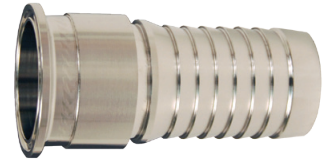


## Internal Expansion (IX) Sanitary Style Hose Couplings

**Features:**

- clamp end x hose shank
- Flow Chief internal expansion (IX) fittings are only to be used with Flow Chief stainless steel ferrules.
- see pages 466-472 for sanitary style gaskets
- see pages 452-453 for sanitary style clamps

Size	304 Stainless Steel	
	Part #	Price/E
1½"	<b>IXSE24</b>	<b>\$138.40</b>
2"	<b>IXSE32</b>	<b>169.00</b>
2½"	<b>IXSE40</b>	<b>270.00</b>
3"	<b>IXSE48</b>	<b>350.50</b>
4"	<b>IXSE64</b>	<b>470.00</b>



## Internal Expansion (IX) Male NPT Hose Couplings

**Feature:**

- Flow Chief internal expansion (IX) fittings are only to be used with Flow Chief stainless steel ferrules.

Size	304 Stainless Steel	
	Part #	Price/E
1½"	<b>IXMS24</b>	<b>\$186.35</b>
2"	<b>IXMS32</b>	<b>180.00</b>
2½"	<b>IXMS40</b>	<b>230.00</b>
3"	<b>IXMS48</b>	<b>351.00</b>
4"	<b>IXMS64</b>	<b>500.00</b>



## Internal Expansion (IX) Bevel Seat Hose Couplings

**Features:**

- Flow Chief internal expansion (IX) fittings are only to be used with Flow Chief stainless steel ferrules.
- see page 482 for bevel seat gaskets



### Female Shank

**Feature:**

- only use with the IXAN nuts shown below

Size	304 Stainless Steel	
	Part #	Price/E
1½"	<b>IXFS24</b>	<b>\$154.35</b>
2"	<b>IXFS32</b>	<b>210.10</b>
2"	<b>IXFS32-3A</b> <sup>1</sup>	<b>215.00</b>
2½"	<b>IXFS40</b>	<b>236.90</b>
3"	<b>IXFS48</b>	<b>375.00</b>
4"	<b>IXFS64</b>	<b>395.00</b>



<sup>1</sup> must use plug part # IXFDPLG187

### Threaded Hex Nuts

series 13H (modified)

Size	304 Stainless Steel	
	Part #	Price/E
1½"	<b>IXAN24</b>	<b>\$37.10</b>
2"	<b>IXAN32</b>	<b>49.10</b>
2½"	<b>IXAN40</b>	<b>73.00</b>
3"	<b>IXAN48</b>	<b>92.25</b>
4"	<b>IXAN64</b>	<b>155.00</b>

