

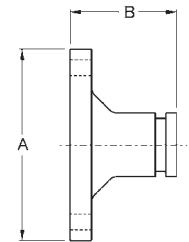
## Flange Adapters - Series FA

**Application:**

- used to connect an ANSI Class 125 and 150 flange to a grooved pipe using a grooved clamp

**Features:**

- Provides a rigid one piece connection that can be disconnected by removing the clamp assembly. To assemble to another flange, position bolt heads on the adapter (grooved) side.
- ductile iron body with rust inhibiting paint



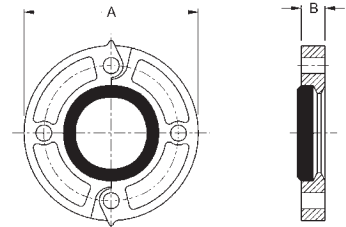
| Nominal Size | Pipe OD | Max PSI at 70°F | Flange Dimensions |         | Approx. Weight (lbs.) | Bolts |      | Ductile Iron |         |
|--------------|---------|-----------------|-------------------|---------|-----------------------|-------|------|--------------|---------|
|              |         |                 | A                 | B       |                       | qty   | size | Part #       | Price/E |
| 2"           | 2.375   | 300             | 6"                | 2-3/8"  | 2.8                   | 4     | 5/8" | FA20         | \$37.40 |
| 3"           | 3.500   | 300             | 7 1/4"            | 2-3/8"  | 5.3                   | 4     | 5/8" | FA30         | 61.15   |
| 4"           | 4.500   | 300             | 8 1/2"            | 2-3/8"  | 6.4                   | 8     | 5/8" | FA40         | 77.40   |
| 6"           | 6.625   | 300             | 11"               | 2-9/16" | 11.5                  | 8     | 3/4" | FA60         | 142.30  |
| 8"           | 8.625   | 300             | 13 1/4"           | 3"      | 23.0                  | 8     | 3/4" | FA80         | 208.50  |

## ANSI Split Flanges - Series SF



**Features:**

- provides a direct connection between a grooved adapter and an ANSI Class 125 and 150 raised face flanged component
  - can be used with flat face flanges by removing the raised projections on the outside face of the flange.
  - ductile iron body with rust inhibiting paint
  - Underwriters Listed and Factory Mutual approved
  - Buna gaskets are available upon request
- Comparable to: Victaulic's #741, Grinnell's #7012



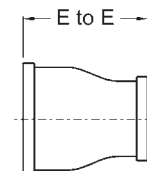
| Nom. Size | Pipe OD | Max. PSI at 70°F | Flange Dimensions |        | Approx. Weight (lbs.) | Bolts |      | Ductile Iron w/ gasket |         | Replacement Gaskets EPDM |         |
|-----------|---------|------------------|-------------------|--------|-----------------------|-------|------|------------------------|---------|--------------------------|---------|
|           |         |                  | A                 | B      |                       | qty   | size | Part #                 | Price/E | Part #                   | Price/E |
| 2"        | 2.375"  | 300              | 6"                | 13/16" | 3.5                   | 4     | 5/8" | ANSI20                 | \$75.85 | FLG200E                  | \$8.15  |
| 2 1/2"    | 2.875"  | 300              | 7"                | 13/16" | 4.6                   | 4     | 5/8" | ANSI25                 | 82.05   | FLG250E                  | 9.40    |
| 3"        | 3.500"  | 300              | 7 1/2"            | 13/16" | 5.1                   | 4     | 5/8" | ANSI30                 | 98.60   | FLG300E                  | 10.95   |
| 4"        | 4.500"  | 300              | 9"                | 15/16" | 8.8                   | 8     | 5/8" | ANSI40                 | 131.05  | FLG400E                  | 12.50   |
| 6"        | 6.625"  | 300              | 11"               | 1"     | 10.6                  | 8     | 3/4" | ANSI60                 | 156.00  | FLG600E                  | 19.35   |
| 8"        | 8.625"  | 300              | 13 1/2"           | 1-1/8" | 17.0                  | 8     | 3/4" | ANSI80                 | 199.70  | FLG800E                  | 34.00   |

## Reducing Adapters - Series RA



**Features:**

- ductile iron body with rust inhibiting paint
- Underwriters Listed and Factory Mutual approved
- Comparable to: Victaulic's #50, Grinnell's #7072



| Nominal Size | Nominal Size | Dimension E to E | Approx. Weight (Lbs.) | Ductile Iron |         |
|--------------|--------------|------------------|-----------------------|--------------|---------|
|              |              |                  |                       | Part #       | Price/E |
| 2"           | 1 1/2"       | 2.5              | 0.9                   | RAGG20150    | \$26.25 |
| 2 1/2"       | 2"           | 2.5              | 1.1                   | RAGG25020    | 27.45   |
| 3"           | 2"           | 2.5              | 1.2                   | RAGG3020     | 26.25   |
| 3"           | 2 1/2"       | 2.5              | 1.5                   | RAGG30250    | 32.45   |
| 4"           | 2"           | 3.0              | 2.2                   | RAGG4020     | 38.60   |
| 4"           | 2 1/2"       | 3.0              | 2.4                   | RAGG40250    | 40.55   |
| 4"           | 3"           | 3.0              | 2.4                   | RAGG4030     | 43.25   |
| 5"           | 4"           | 3.5              | 4.4                   | RAGG5040     | 69.90   |
| 6"           | 2"           | 4.0              | 4.0                   | RAGG6020     | 78.65   |
| 6"           | 2 1/2"       | 4.0              | 4.4                   | RAGG60250    | 90.30   |
| 6"           | 3"           | 4.0              | 4.6                   | RAGG6030     | 82.40   |
| 6"           | 4"           | 4.0              | 7.0                   | RAGG6040     | 82.40   |

