

PS-90 & PS-24 Current Regulated Power Supplies and Power Amplifiers for Spyder Plus, Cygnus and Optional for Versatec



PS-90



PS-24



Inputs

Supply Voltage

PS-24 24 VAC or 24 VDC +/- 10%, 50/60 Hz, 2.1 amp max

PS-90 115 VAC +/- 10%, 50/60 Hz, 1.1 amp max

Tension 1 k Ω to 10 k Ω , 1/4 watt minimum or

Tension Voltage 0 to 10 VDC, 100 k Ω input impedance

Outputs

Clutch/Brake

PS-24 Current regulated -1.2 to 24 VDC. Adjustable in three current ranges: 1/2, 1, 2 amp

PS-90 Current regulated -3.6 to 90 VDC. Adjustable in four current ranges: 1/8, 1/4, 1/2, 1 amp

Meter Signal 0 to 1 mADC

Potentiometer Supply Voltage 10 VDC, 10 mADC max

The PS-24 and PS-90 provide current regulated power output to magnetic particle clutches and brakes for use in unwind, rewind, or intermediate tension control applications.

PS-24 and PS-90 power supply units can be adjusted manually or automatically for consistent, repeatable results. The reverse-current feature minimizes drag torque, allowing for use of the full torque range of magnetic particle devices. When used with a tension control, they can be automatically adjusted to maintain tension through the roll build.

With selectable current ranges, these power supplies provide the flexibility to control any size clutch or brake with optimum resolution.

The PS-24 and PS-90 are compact, with DIN rails to mount easily inside a machine cabinet or Cygnus-E tension control. Torque can be adjusted with a conveniently mounted potentiometer or through input from a PLC or other automatic control device.

Features

Current regulated 24 VDC or 90 VDC output with selectable ranges

Reverse-current feature to minimize drag torque

0-1 mADC remote meter output is proportional to the current range selected and indicates output as a percentage of the selected range

Manually adjustable through remote potentiometer

Compact enclosure requires minimal mounting space

Simplicity of DIN rail mounting

CE compliant and UL listed

Temperature

Operating 0 to 50° C

Storage -30° to 80° C

Enclosure

PS-24 IP20 (IEC529)

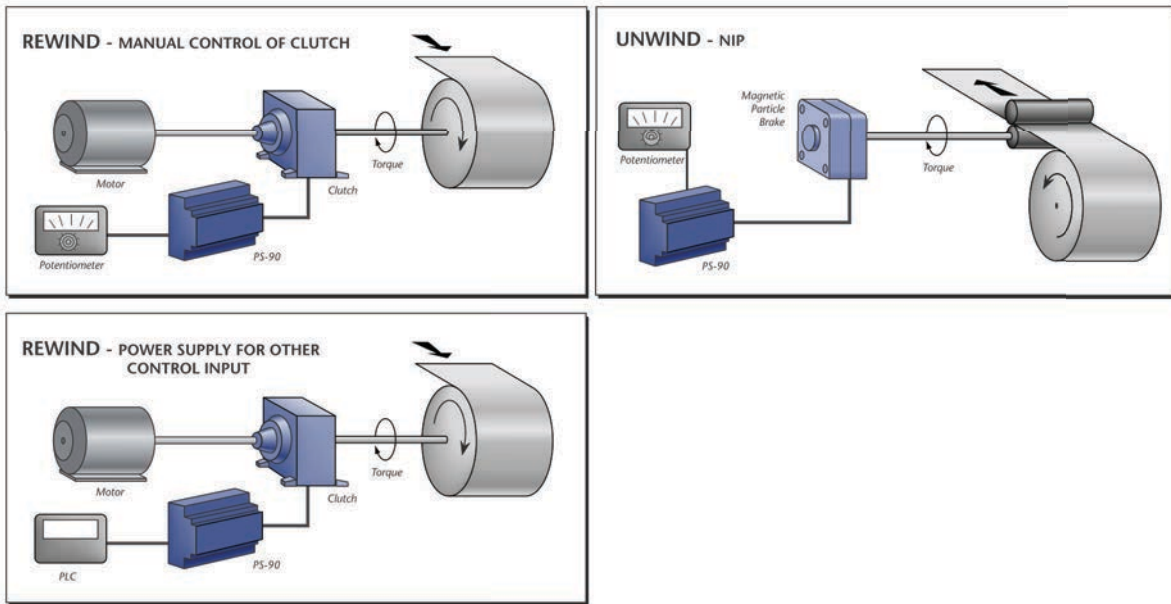
PS-90 IP20 (IEC529)

Certifications

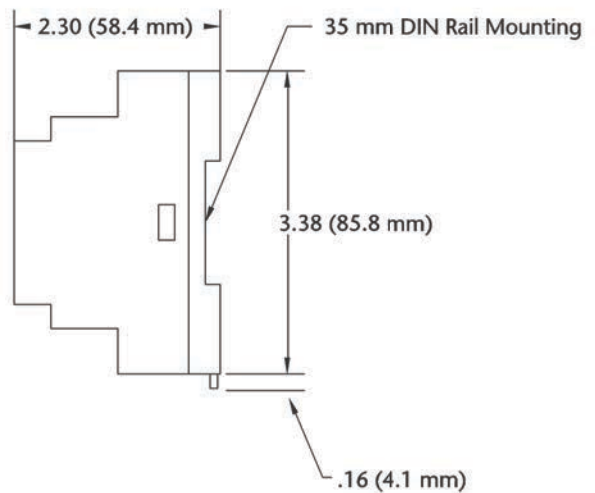
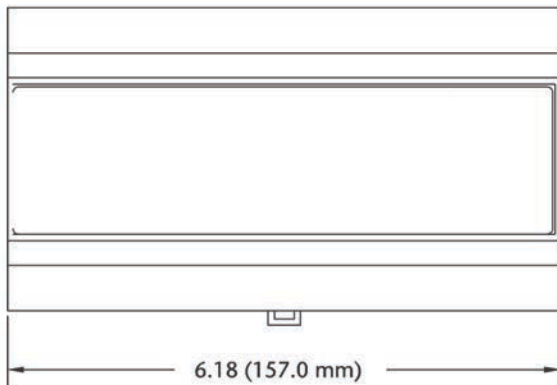
CE (EN61326-1)

UL 508C Listed

PS-90 & PS-24 Applications and Dimensions



Dimensions in inches (mm)



Parts and Ordering Information

PS-90	Power Supply, 90 VDC output, 117VA with clutch or brake coil
PS-24	Power Supply, 24 VDC output
9A13-1RPL	Output Meter (optional)
IKPOT	Input Device (optional)