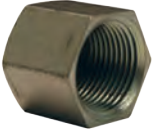


NPTF Fittings

female NPTF hex caps



Female NPTF	Zinc Plated Steel		
	Part #	PSI	Price/E
1/8"-27	5406C-2	5000	\$1.45
1/4"-18	5406C-4	5000	1.85
3/8"-18	5406C-6	4000	2.65
1/2"-14	5406C-8	3000	4.20
3/4"-14	5406C-12	2500	6.35
1"-11 1/2	5406C-16	2000	9.65
1 1/4"-11 1/2	5406C-20	1150	49.15
1 1/2"-11 1/2	5406C-24	1000	66.60

male NPT hex plug



Male NPT	Zinc Plated Steel		
	Part #	PSI	Price/E
1/8"-27	1251-02H	5000	\$0.50
1/4"-18	1251-04H	5000	0.85
3/8"-18	1251-06H	4000	1.50
1/2"-14	1251-08H	3000	2.45
3/4"-14	1251-12H	2500	3.80
1"-11 1/2	1251-16H	2000	7.05
1 1/4"-11 1/2	1251-20H	1150	8.30

Metric Fittings

male 37° flare x male metric parallel thread



Male SAE 37°	Male Metric Parallel	Zinc Plated Steel	
		Part #	Price/E
7/16"-20	M10X1.0	M7400-4-10	\$3.50
7/16"-20	M12X1.5	M7400-4-12	3.65
9/16"-18	M14X1.5	M7400-6-14	3.85
9/16"-18	M16X1.5	M7400-6-16	4.30
3/4"-16	M16X1.5	M7400-8-16	4.45
3/4"-16	M18X1.5	M7400-8-18	5.65
1-1/16"-12	M22X1.5	M7400-12-22	6.45
1-1/16"-12	M27X2.0	M7400-12-27	7.85
1-5/16"-12	M33X2.0	M7400-16-33	11.80

female NPTF pipe x male metric parallel thread



Female NPTF	Male Metric Parallel	Zinc Plated Steel	
		Part #	Price/E
1/4"-18	M12X1.5	M7455-4-12	\$3.85
1/4"-18	M14X1.5	M7455-4-14	4.00
3/8"-18	M16X1.5	M7455-6-16	4.30
3/8"-18	M18X1.5	M7455-6-18	5.65
1/2"-14	M16X1.5	M7455-8-16	7.15
1/2"-14	M18X1.5	M7455-8-18	7.15
1/2"-14	M22X1.5	M7455-8-22	7.50
3/4"-14	M27X2.0	M7455-12-27	11.25
1"-11 1/2	M33X2.0	M7455-16-33	12.50