

SAE / JIC Fittings

JIC caps

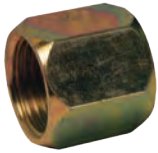
Feature:

- reference SAE 070112



JIC Female	Tube OD	Zinc Plated Steel		
		Part #	PSI	Price/E
5/16"-24	1/8"	0304C-2	5000	\$1.55
7/16"-20	1/4"	0304C-4	5000	0.85
9/16"-18	3/8"	0304C-6	5000	0.95
3/4"-16	1/2"	0304C-8	4500	1.35
7/8"-14	5/8"	0304C-10	3500	1.65
1-1/16"-12	3/4"	0304C-12	3500	2.45
1-5/16"-12	1"	0304C-16	3000	3.55
1-5/8"-12	1 1/4"	0304C-20	2500	7.10
1-7/8"-12	1 1/2"	0304C-24	2000	15.85
2-1/2"-12	2"	0304C-32	1500	24.10

tube nuts



Female JIC 37°	Tube OD	Zinc Plated Steel		
		Part #	PSI	Price/E
7/16"-20	1/4"	0318-4	5000	\$0.85
9/16"-18	3/8"	0318-6	5000	1.05
3/4"-16	1/2"	0318-8	4500	1.55
7/8"-14	5/8"	0318-10	3500	1.90
1-1/16"-12	3/4"	0318-12	3500	2.55
1-5/16"-12	1"	0318-16	3000	3.45

JIC screw thread plugs



Male JIC Size	Zinc Plated Steel		
	Part #	PSI	Price/E
5/16"-24	1254-02H	5000	\$1.55
7/16"-20	1254-04H	5000	1.15
9/16"-18	1254-06H	5000	1.20
3/4"-16	1254-08H	4500	1.40
7/8"-14	1254-10H	3500	2.75
1-1/16"-12	1254-12H	3500	2.85
1-5/16"-12	1254-16H	3000	4.00
1-5/8"-12	1254-20H	2500	6.80

tube sleeves



Female JIC 37°	Zinc Plated Steel		
	Part #	PSI	Price/E
7/16"-20	0319-4	5000	\$0.55
9/16"-18	0319-6	5000	0.70
3/4"-16	0319-8	4500	0.80
7/8"-14	0319-10	3500	1.05
1-1/16"-12	0319-12	3500	1.35
1-5/16"-12	0319-16	3000	2.45

bulkhead union with lock nut

Feature:

- reference SAE 070601



Male 37° Flare	Zinc Plated Steel		
	Part #	PSI	Price/E
7/16"-20	2700LN-4	5000	\$3.40
9/16"-18	2700LN-6	5000	3.70
3/4"-16	2700LN-8	4500	5.65
7/8"-14	2700LN-10	3500	7.45
1-1/16"-12	2700LN-12	3500	9.60
1-5/16"-12	2700LN-16	3000	13.65