

## FEATURES/BENEFITS

### Polymer-Housed Ball Bearings

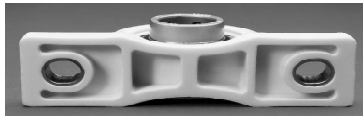
Our goal at DODGE is to create the world's most successful customer. We do that by listening and responding to our customers' needs. Customers in the food and beverage processing industry told us they needed new and improved products that help make their industry safer – products that help in the fight against contamination from bacteria such as E. coli, salmonella, and staphylococcus aureus.

DODGE delivered by expanding our high performance E-Z KLEEN line with this new, improved generation of E-Z KLEEN engineered polymer-housed ball and sleeve bearings.



New DODGE E-Z KLEEN with solid-based housing

Competitive bearing with cavities and fillings that can trap bacteria



#### RUGGED, SOLID-BASE HOUSING

- Manufactured with no cavities and no fillings – no traps for bacteria
- Features anti-microbial polymer that helps prevent bacterial and fungal growth
- Housing strength exceeds static capacity of bearing
- Designed with stainless steel lube fittings and stainless-steel ferrules in bolt holes
- For no relube (NL) – remove the lube fitting and install the polymer plug that is shipped with each earing
- Retains dimensional stability in harsh environments
- Resists flaking and peeling, even after repeated washdowns
- Provides excellent chemical resistance
- Available with end closures
- FDA/USDA compliant

#### RESULTS OF HOUSING ANTI-MICROBIAL ACTIVITY AGAINST TEST ORGANISMS

| TEST ORGANISM         | TYPE OF ORGANISM | GROWTH-FREE ZONE (MM) | CONTACT INHIBITION (%) |
|-----------------------|------------------|-----------------------|------------------------|
| Staphylococcus aureus | Bacterial        | 0                     | 100                    |
| Aspergillus niger     | Fungal           | 0                     | 100                    |

#### CORROSION-RESISTANT BALL BEARING INSERTS

- Corrosion-resistant PROGUARD™ Plus seal
- Corrosion-resistant inner and outer ring
- Stainless-steel setscrews (SC) and CR capscrew (D-LOK)
- FDA/USDA-approved lubricant
- Relubricable
- Anti-rotation pin
- Reinforced, stabilized nylon cage
- Offered in inch and metric sizes
- Temperature range -20° to +225° F

#### TWO SHAFT-LOCKING SYSTEMS FROM STOCK

- SC – Two stainless-steel setscrews set 65° apart
- D-LOK – Corrosion-resistant concentric collar

#### POPULAR HOUSING STYLES

- Pillow blocks
- Tapped-base pillow blocks
- 2- and 4-bolt flange bearings
- Flange brackets
- Wide slot take-up bearings

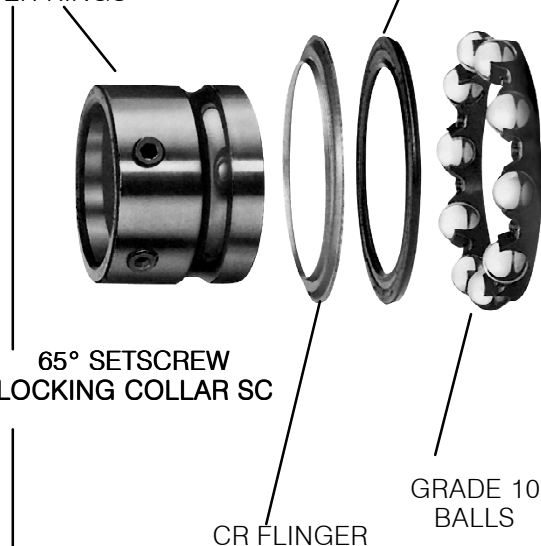
PRECISION-HARDENED AND HONED INNER AND OUTER RINGS

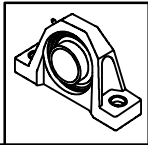
CORROSION-RESISTANT PROGUARD PLUS SEAL

65° SETSCREW LOCKING COLLAR SC

CR FLINGER

GRADE 10 BALLS

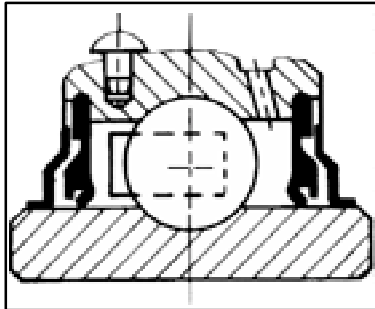




# FEATURES/BENEFITS

## Polymer-Housed Ball Bearings

DODGE  
PROGUARD™ PLUS SEAL



Corrosion-resistant PROGUARD Plus seal with flingers – a combination contact land-riding seal and labyrinth – keeps lubricants in, contaminants out.



D-LOK DL

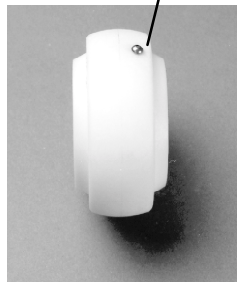
PRECISION-HARDENED AND  
HONED INNER AND  
OUTER RINGS

Precision-hardened and honed inner and outer rings for wear resistance, quieter operation, and longer life.

ANTI-ROTATION PIN

Anti-rotation pin prevents rotation of the insert within the housing. Simple and effective, it makes inserts easier to replace.

STAINLESS-STEEL  
ANTI-ROTATION PIN



POLYMER SLEEVE

E-Z KLEEN POLYMER-HOUSED  
BEARING WITH  
POLYMER SLEEVE INSERT



- Targeted for wet, cool, and cold-side environments/applications
- Self-lubricating polymer sleeve insert
- All polymer and stainless-steel construction
- Features stainless-steel anti-rotation pin on sphere of insert
- Resists fungus and bacterial growth
- Ensures quiet operation
- Conforms to FDA/USDA specifications
- Offered in both inch and meter sizes

ANTI-ROTATION  
PIN

CORROSION-RESISTANT  
FLINGER

STAINLESS-STEEL  
LUBE FITTING

ANTIMICROBIAL  
POLYMER HOUSING

STAINLESS-STEEL  
BOLT FERRULE

CORROSION-RESISTANT  
PROGUARD PLUS SEAL

