

Hub City™ HERA® High-Efficiency Right Angle Gear Drives

Models: HERA35PS, HERA45PS,
HERA55PS, HERA75PS

Coupled Input

MODEL	C.D.	A	B	D	E	AA	BB	CC	DD	EE	FF	GG
HERA35PS	2.509	4.25	1.178	2.062	5.750	4.188	2.094	2.750	1.375	5/16 UNC	0.63	0.63
						5.000	2.500	2.875	1.438	3/8 UNC	0.69	0.69
HERA45PS	3.263	4.88	1.175	2.500	6.938	5.000	2.500	2.875	1.438	3/8 UNC	0.69	0.69
HERA55PS	3.675	6.15	2.200	3.500	9.375	7.500	3.750	4.000	2.000	7/16 UNC	0.88	0.88
HERA75PS	4.287	8.36	2.650	4.438	11.375	8.500	4.250	5.000	2.500	5/8 UNC	1.00	1.00

MODEL	G	H	H2	I	I2	J	K	L	M	N	O	R	Wt. Lbs.
HERA35PS	56C	2.25	N/A	7.57	N/A	3/16 X 3/32	5.875	4.501/4.503	0.625	6.63	13/32	0.188	32
	143TC								0.875				
HERA45PS	56C	2.25	N/A	7.76	N/A	3/16 X 3/32	5.875	4.501/4.503	0.625	6.63	13/32	0.188	44
	143TC								0.875				
	182TC	N/A	3.25	N/A	8.76	1/4 X 1/8	7.250	8.501/8.503	1.125	9.00	17/32	0.188	54
HERA55PS	56C	2.25	N/A	9.00	N/A	3/16 X 3/32	5.875	4.501/4.503	0.625	6.50	13/32	0.188	83
	143TC								0.875				
	182TC	N/A	3.25	N/A	10.00	1/4 X 1/8	7.250	8.501/8.503	1.125	9.00	17/32	0.188	91
	213TC					5/16 X 5/32			1.375				
HERA75PS	56C	2.25	N/A	9.88	N/A	3/16 X 3/32	5.875	4.501/4.503	0.625	6.50	13/32	0.188	169
	143TC								0.875				
	182TC	N/A	3.25	N/A	10.88	1/4 X 1/8	7.250	8.501/8.503	1.125	9.00	17/32	0.188	178
	213TC					5/16 X 5/32			1.375				

Stock Bores

MODEL	S	T	U	X	Key Furnished
HERA35PS	5.50	2.75	3/4	3/16 X 3/32	3/16 Sq.
			7/8	3/16 X 3/32	3/16 Sq.
			1	1/4 X 1/8	1/4 Sq.
			1-1/8	1/4 X 1/8	1/4 Sq.
			1-3/16	1/4 X 1/8	1/4 Sq.
			1-1/4	1/4 X 1/8	1/4 Sq.
			1-7/16	3/8 X 1/8	3/8 X 5/16
HERA45PS	6.25	3.13	1	1/4 X 1/8	1/4 Sq.
			1-1/8	1/4 X 1/8	1/4 Sq.
			1-3/16	1/4 X 1/8	1/4 Sq.
			1-1/4	1/4 X 1/8	1/4 Sq.
			1-7/16	3/8 X 1/8	3/8 X 5/16
HERA55PS	7.50	3.75	1-3/16	1/4 X 1/8	1/4 Sq.
			1-1/4	1/4 X 1/8	1/4 Sq.
			1-7/16	3/8 X 3/16	3/8 Sq.
			1-1/2	3/8 X 3/16	3/8 Sq.
			1-1/2	3/8 X 3/16	3/8 Sq.

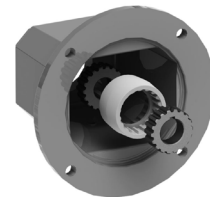
MODEL	S	T	U	X	Key Furnished
HERA55ES (Cont.)	7.50	3.75	1-5/8	3/8 X 3/16	3/8 Sq.
			1-11/16	3/8 X 3/16	3/8 Sq.
			1-3/4	3/8 X 3/16	3/8 Sq.
			1-7/8	1/2 X 1/4	1/2 Sq.
			1-15/16	1/2 X 3/16	1/2 X 7/16
			2	1/2 X 3/16	1/2 X 7/16
			2-3/16	1/2 X 1/8	1/2 X 3/8
HERA75ES	9.50	4.75	1-7/16	3/8 X 3/16	3/8 Sq.
			1-1/2	3/8 X 3/16	3/8 Sq.
			1-15/16	1/2 X 1/4	1/2 Sq.
			2	1/2 X 1/4	1/2 Sq.
			2-3/16	1/2 X 1/4	1/2 Sq.
			2-7/16	5/8 X 5/16	5/8 Sq.
			3	3/4 X 3/8	3/4 Sq.
3-7/16	7/8 X 1/4	7/8 X 11/16			

Bore tolerance nominal + .0025

Nema "C" Flange Adaptor Kits

SERIES	BASE UNIT REQUIRED		"C-FLANGE KIT NO."	SHIPPING Wt. Lbs.	G
	MODEL	SIZE REF.			
HERA35	HERA35AS	24	0259-00079	12	56C
			0259-00080	12	143TC
HERA45	HERA45AS	24	0259-00079	12	56C
			0259-00080	12	143TC
			0259-00081	20	182TC
HERA55	HERA55AS	32	0259-00108	14	56C
			0259-00109	14	143TC
			0259-00110	22	182TC
			0259-00111	22	213TC
HERA75	HERA75AS	32	0259-00108	14	56C
			0259-00109	14	143TC
			0259-00110	22	182TC
			0259-00111	22	213TC

Nema C-Flange Adaptor Kits can be ordered separately and attached to HERA_AS models. See chart for base unit requirements onto which they can be attached.



Torque Arm Kits Required for Shaft Mounted applications – See Page H-17