

Hub City™ Worm Gear Drives

Single Reduction GW Series Catalog Ratings

Series GW60

SERIES	INPUT RPM	RATIO	OUTPUT RPM	MECH. INPUT HP	CONVENTIONAL OIL		PAO SYNTHETIC OIL		PAG SYNTHETIC OIL	
					EFF. %	MECH. OUTPUT TORQUE	EFF. %	MECH. OUTPUT TORQUE	EFF. %	MECH. OUTPUT TORQUE
GW60	1750	5	341.5	35.1	96.0	6068	96.9	6129	97.9	6189
		7.5	236.5	29.9	95.1	7704	96.5	7820	97.5	7897
		10	179.5	24.9	94.0	8467	96.4	8679	97.3	8763
		15	119.3	19.2	91.5	9515	93.8	9753	95.2	9896
		20	85.4	15.7	89.5	10127	91.7	10380	93.5	10583
		25	71.4	13.0	87.1	10245	89.3	10501	91.0	10706
		30	59.3	11.1	84.8	10249	86.9	10505	88.6	10710
		40	43.8	8.72	81.2	10203	83.2	10458	84.8	10662
		50	35	7.24	77.2	10079	79.2	10331	80.7	10533
		60	29.2	6.15	73.7	9808	75.6	10053	77.1	10249
	80	21.9	3.70	68.1	7264	69.8	7446	71.1	7591	
	100	17.5	2.57	63.5	5886	65.1	6033	66.4	6151	
	1170	5	228.3	29.9	95.8	7726	96.7	7803	97.7	7881
		7.5	158.1	25.4	94.8	9740	96.3	9886	97.2	9984
		10	120	21.1	93.7	10687	96.0	10954	97.0	11061
		15	79.8	16.3	91.1	11996	93.3	12296	94.7	12476
		20	57.1	13.3	88.8	12758	91.1	13077	92.8	13332
		25	47.8	11.0	86.3	12903	88.5	13226	90.2	13484
		30	39.7	9.50	84.0	12911	86.1	13234	87.8	13492
		40	29.3	7.43	80.2	12848	82.2	13169	83.8	13426
		50	23.4	6.18	76.1	12691	78.0	13008	79.5	13262
		60	19.5	5.26	72.5	12352	74.3	12661	75.8	12908
	80	14.6	3.31	64.0	9142	65.6	9371	66.8	9553	
	100	11.7	2.32	59.2	7408	60.7	7593	61.9	7741	
	100	5	19.5	6.20	89.9	17587	90.8	17763	91.7	17939
		7.5	13.5	5.01	87.1	20662	88.4	20972	89.2	21179
		10	10.3	4.19	84.3	22324	86.4	22882	87.3	23105
		15	6.8	3.33	78.6	24797	80.5	25417	81.7	25789
		20	4.9	2.80	74.0	26194	75.9	26849	77.4	27373
		25	4.1	2.41	69.4	26436	71.1	27097	72.5	27626
		30	3.4	2.14	65.3	26480	66.9	27142	68.2	27672
		40	2.5	1.76	59.1	26260	60.6	26917	61.8	27442
		50	2	1.54	53.3	25925	54.6	26573	55.7	27092
		60	1.7	1.37	48.6	25283	49.8	25915	50.8	26421
	80	1.3	0.95	40.2	19249	41.2	19730	42.0	20115	
	100	1	0.68	35.5	15389	36.4	15774	37.1	16082	

OVERHUNG LOAD AND THRUST LOAD INFORMATION

NOTE: ALL TORQUE VALUES LISTED IN INCH-POUNDS, ALL OVERHUNG LOAD VALUES LISTED IN POUNDS. THE POINT OF APPLICATION OF THE OVERHUNG LOAD IS CONSIDERED TO BE ONE SHAFT DIAMETER MEASURED OUTWARD FROM THE GEAR CASE HOUSING. AT SPEEDS ABOVE 1750 RPM, UNITS MAY BECOME THERMALLY LIMITED. FOR EXTENDED OPERATION, LIMIT INPUT HP TO 1750 RPM CATALOG RATING.

Thrust and Overhung Load Ratings (Lbs.)	GW60
Thrust Load Ratings (Low Speed Shaft, All Ratios)	3990
Overhung Load Capacity* (High Speed Shaft, All Ratios)	450
Overhung Load Capacity* (Low Speed Shaft, All Ratios)	3723
Overhung Load Capacity** (Extended Brg Design Output Shaft, All Ratios)	2245

* OHL AND THRUST VALUES SHOWN ARE INDEPENDENT FUNCTIONS AND CANNOT BE APPLIED SIMULTANEOUSLY. REFER APPLICATIONS WITH COMBINED OHL AND THRUST TO HUB CITY CUSTOMER SERVICE DEPARTMENT.

* THE POINT OF APPLICATION OF THE OVERHUNG LOAD IS CONSIDERED TO BE ONE SHAFT DIAMETER MEASURED OUTWARD FROM THE GEARCASE HOUSING.

** LOAD LOCATED AT END OF OUTPUT SHAFT.

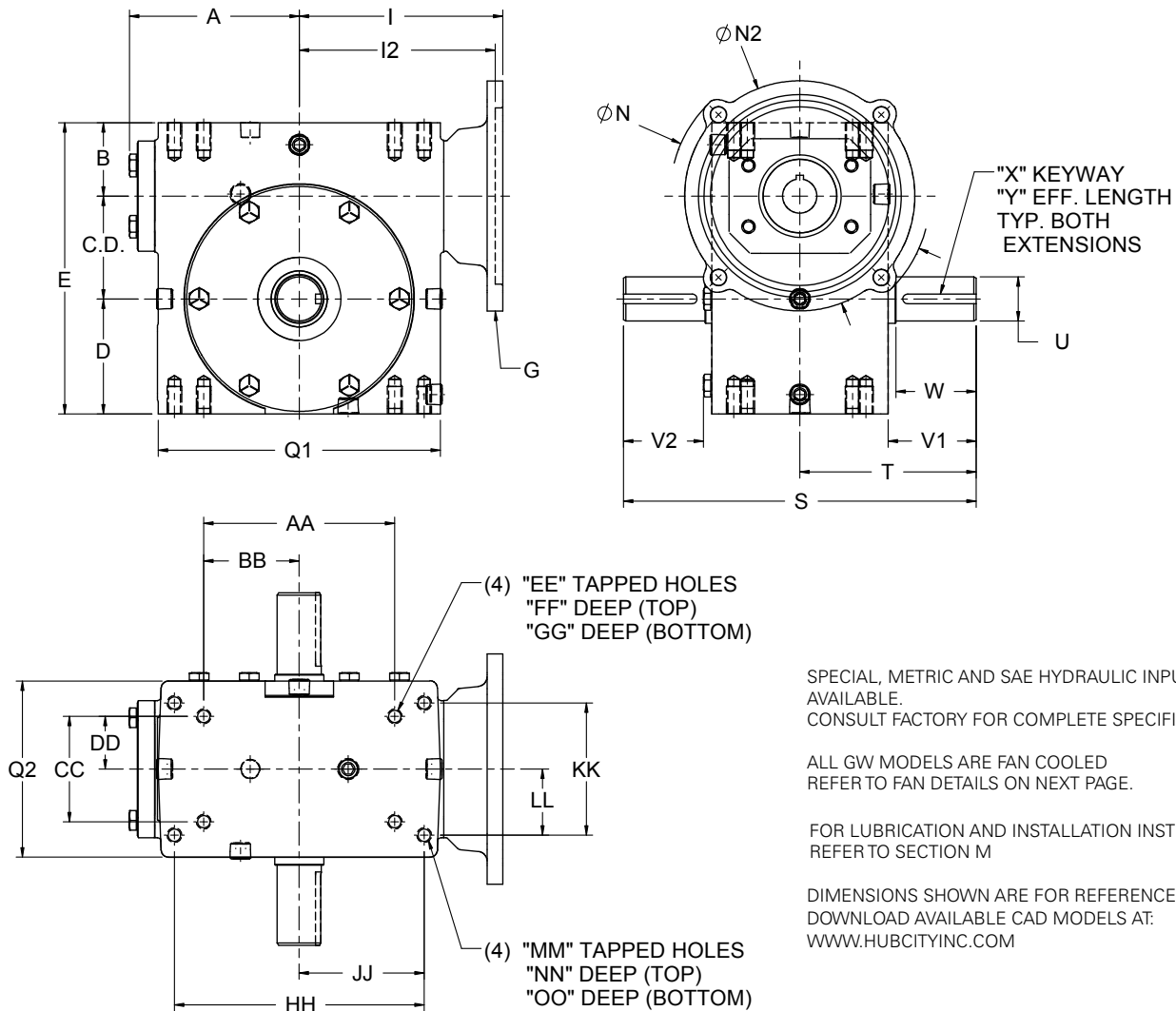
ADDITIONAL RATINGS FOR OTHER INPUT SPEEDS ARE AVAILABLE AT WWW.REGALBELOIT.COM

OUTPUT TORQUE VALUES SHOWN ARE INCH-POUNDS (IN-LB).

Hub City™ Worm Gear Drives

Single Reduction Models

134, 154, 184, 214, 244, 264, 304, 324, 384, 424, 454, 524, GW604



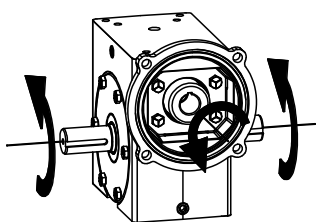
SPECIAL, METRIC AND SAE HYDRAULIC INPUT FLANGES AVAILABLE.
CONSULT FACTORY FOR COMPLETE SPECIFICATIONS.

ALL GW MODELS ARE FAN COOLED
REFER TO FAN DETAILS ON NEXT PAGE.

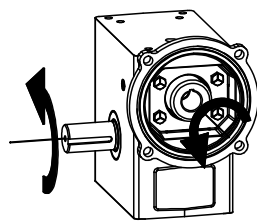
FOR LUBRICATION AND INSTALLATION INSTRUCTIONS -
REFER TO SECTION M

DIMENSIONS SHOWN ARE FOR REFERENCE ONLY.
DOWNLOAD AVAILABLE CAD MODELS AT:
WWW.HUBCITYINC.COM

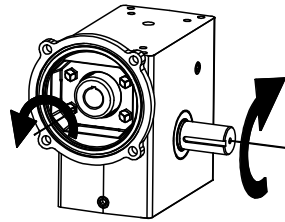
Standard Styles Available



STYLE "A"



STYLE "B"



STYLE "C"

CONSULT FACTORY FOR VERTICAL SHAFT LUBRICATION RECOMMENDATIONS.
INPUT SHAFT CAN BE ROTATED IN EITHER DIRECTION.

Hub City™ Worm Gear Drives

Single Reduction Models

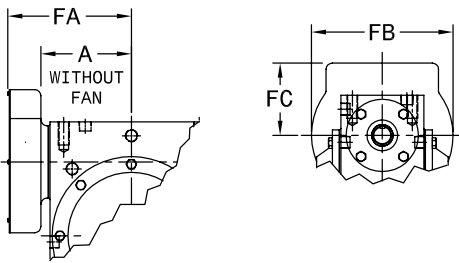
134, 154, 184, 214, 244, 264, 304, 324, 384, 424, 454, 524, GW604

MODEL	C.D.	A	B	D	E	Q1	Q2
134	1.334	2.61	1.186	1.562	4.082	4.12	3.12
154	1.541	3.14	1.928	1.906	5.375	4.88	3.44
184	1.751	3.23	1.374	1.875	5.000	5.16	3.44
214	2.064	3.61	1.500	2.437	6.000	5.88	4.12
244	2.376	3.77	2.061	2.500	6.937	6.12	4.06
264	2.626	4.33	1.874	2.938	7.438	7.20	4.50
304	3.001	4.84	2.624	3.250	8.875	8.12	5.25
324	3.251	5.28	2.124	3.250	8.625	8.62	5.20
384	3.751	4.90	2.374	3.937	10.062	9.60	5.62
424	4.251	6.10	2.686	4.438	11.375	10.25	6.13
454	4.501	5.23	2.499	4.625	11.625	9.25	4.63
524	5.168	5.98	2.624	5.375	13.167	10.75	5.06
GW604	6.000	N/A	4.000	6.500	16.500	14.25	8.13

MODEL	S	T	U	V1	V2	W	X	Y
134	6.50	3.25	.625/.624	1.69	1.53	1.60	3/16 X 3/32	1.38
154	8.62	4.31	.750/.7485	2.11	1.90	2.08	3/16 X 3/32	1.51
184	7.00	3.50	.750/.749	1.78	1.57	1.54	3/16 X 3/32	1.41
214	8.50	4.25	.875/.874	2.19	1.98	1.95	3/16 X 3/32	1.83
244	10.28	5.14	1.125/1.1235	2.66	2.44	2.62	1/4 x 1/8	1.76
264	9.00	4.50	1.250/1.249	2.25	2.04	N/A	1/4 x 1/8	1.85
304	13.50	6.75	1.250/1.2485	3.60	3.36	3.57	1/4 X 1/8	2.26
324	10.88	5.44	1.375/1.374	2.84	2.62	2.75	5/16 X 5/32	2.31
384	13.38	6.69	1.500/1.499	3.88	N/A	N/A	3/8 X 3/16	3.16
424	16.24	8.12	1.875/1.8735	4.50	4.21	4.47	1/2 X 1/4	3.06
454 **	14.50	7.25	1.625/1.624	4.18	N/A	3.90	3/8 X 3/16	3.28
524 ***	15.62	7.81	1.750/1.749	4.47	N/A	4.17	3/8 X 3/16	3.50
GW604	20.00	10.00	2.500	4.65	4.65	N/A	5/8 X 5/16 P&W	4.00

** ALSO AVAILABLE WITH 1.750/1.749 (U) DIAMETER OUTPUT SHAFT. CONSULT FACTORY.
 *** ALSO AVAILABLE WITH 2.000/1.999 (U) DIAMETER OUTPUT SHAFT. CONSULT FACTORY.

Fan Detail for Model GW604



MODEL	A	FA	FB	FC
GW604	N/A	11.13	9.50	4.00

ALL GW MODELS ARE FAN COOLED.

MODEL	G	I	I2	N	N2		
134	48CZ	3.46	N/A	4.36	3.87		
	56C			6.63	6.50		
154	48CZ	3.99	N/A	4.36	3.87		
	56C			6.63	6.50		
	143TC						
184	48CZ	4.09	N/A	4.36	3.87		
	56C			6.63	6.50		
	143TC						
214	48CZ	4.46	N/A	4.36	3.87		
	56C			6.63	6.50		
	143TC						
244	56C	4.63	N/A	6.50	6.50		
	143TC						
	182TC						
264	56C	5.19	N/A	6.50	6.50		
	143TC						
	182TC						
304	56C	5.95	N/A	6.50	6.50		
	143TC						
	182TC			6.15	9.00	9.00	
	213TC			6.71			
324	56C	6.14	N/A	6.50	6.50		
	143TC						
	182TC			6.34	9.00	9.00	
	213TC			6.90			
384	56C	6.50	N/A	6.50	6.50		
	143TC						
	182TC						
424	56C	6.45	N/A	6.50	6.50		
	143TC						
	182TC			7.21	9.00	9.00	
	213TC						7.77
	254TC						
454	56C	6.75	N/A	6.50	6.50		
	143TC						
	182TC			6.75	9.00	9.00	
	213TC						
524 *	182TC	N/A	7.50	9.00	9.00		
	213TC						
	254TC						
GW604	56C	10.45	N/A	6.50	6.50		
	143TC						
	182TC			9.33	9.00	9.00	
	213TC						
	254TC						9.94

* 56C & 143TC FLANGES AVAILABLE AS MODIFIED STANDARDS

MODEL	AA	BB	CC	DD	EE	FF	GG	HH	JJ	KK	LL	MM	NN	OO	Wt. Lbs.
134	2.250	1.125	1.625	0.813	1/4 UNC	0.50	0.50	3.250	1.625	2.000	1.000	5/16 UNC	0.50	0.50	12
154	4.188	2.094	2.750	1.375	5/16 UNC	0.63	0.63	N/A	N/A	N/A	N/A	N/A	N/A	N/A	16
184	3.125	1.563	1.625	0.813	1/4 UNC	0.50	0.50	4.188	2.094	2.750	1.375	5/16 UNC	0.63	0.63	16
214	4.000	2.000	2.000	1.000	3/8 UNC	0.50	0.70	5.000	2.500	2.875	1.438	3/8 UNC	0.70	0.70	25
244	5.000	2.500	2.875	1.438	3/8 UNC	0.69	0.69	N/A	N/A	N/A	N/A	N/A	N/A	N/A	38
264	4.875	2.438	2.688	1.344	3/8 UNC	0.70	0.70	6.375	3.188	3.375	1.688	3/8 UNC	0.70	0.70	38
304	7.000	3.500	4.000	2.000	7/16 UNC	0.88	0.88	N/A	N/A	N/A	N/A	N/A	N/A	N/A	61
324	6.250	3.125	2.750	1.375	1/2 UNC	0.75	0.75	7.500	3.750	4.000	2.000	7/16 UNC	0.88	0.88	67
384	6.875	3.438	3.000	1.500	1/2 UNC	0.94	1.00	8.500	4.250	4.750	2.375	1/2 UNC	1.00	1.00	90
424	8.500	4.250	5.000	2.500	5/8 UNC	1.00	1.00	N/A	N/A	N/A	N/A	N/A	N/A	N/A	112
454	8.125	4.063	3.250	1.625	5/8 UNC	0.88	1.13	N/A	N/A	N/A	N/A	N/A	N/A	N/A	112
524	9.500	4.750	3.750	1.875	5/8 UNC	1.00	1.25	N/A	N/A	N/A	N/A	N/A	N/A	N/A	138
GW604	12.750	6.375	6.380	3.190	5/8 UNC	1.00	1.00	N/A	N/A	N/A	N/A	N/A	N/A	N/A	324