

# Hub City™ Bevel Gear Drives

## Model 1200

### Features

- Rugged ductile iron housing provides maximum gear and bearing support.
- High alloy shafting for greater strength.
- Tapered roller bearings for endurance and strength.
- Spiral bevel (SP) gearing to assure low noise level at higher operating speeds.
- Choice of six (6) standard gear ratios.
- Available with 8" or 10" pitch diameter gears in 1:1 ratio to provide optimum design flexibility.
- Heavy-duty industrial seals to keep lubricant in and dirt out.
- Base mounting kit available. (Refer to page D-59)
- Hub City lubricant recommended. (Refer to section M)
- Hub City "Counter Flow" bearing lubrication system.
- Metric versions available. (Refer to page D-57)



### Rating Table

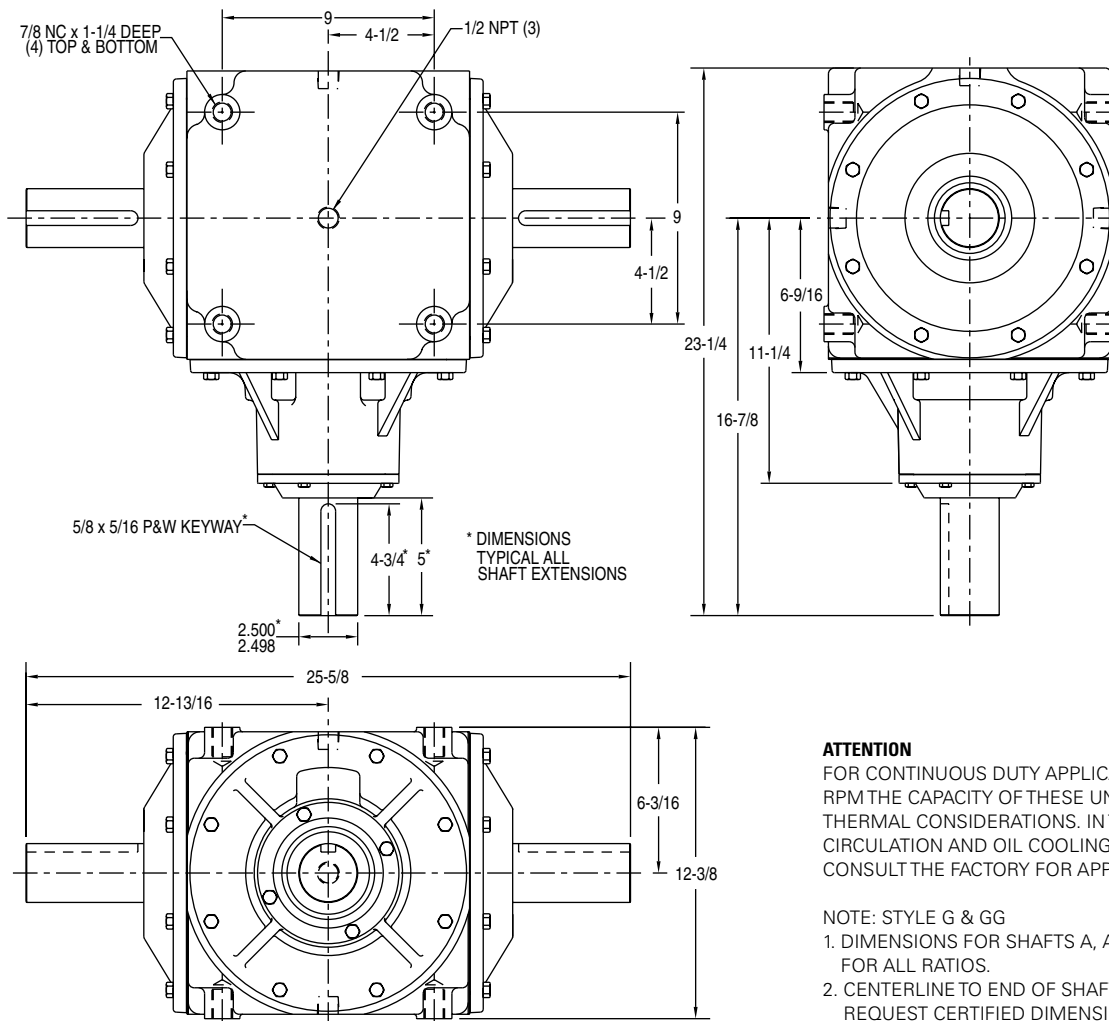
INPUT RPM†		REDUCTION RATIOS					
		1:1 (8") SP	1: 1 (10") SP	1.33:1 SPΔ	1.5:1 SP	2:1 SP	3:1 SP
1750	INPUT HORSEPOWER	296.00	380.00	246.00	196.00	224.00	118.00
	OUTPUT TORQUE IN. LBS.	10,680.00	13,685.00	11,821.00	10,591.00	16,148.00	12,749.00
	INPUT O.H.L. †	118.00	177.00	104.00	109.00	102.00	117.00
	OUTPUT O.H.L. ‡	396.00	155.00	657.00	1284.00	579.00	2217.00
1150	INPUT HORSEPOWER	203.50	261.00	168.00	134.00	155.00	79.00
	OUTPUT TORQUE IN. LBS.	11,148.00	14,304.00	12,278.00	11,005.00	16,931.00	13,051.00
	INPUT O.H.L. †	238.00	391.00	209.00	213.00	196.00	236.00
	OUTPUT O.H.L. ‡	816.00	570.00	1009.00	1692.00	960.00	2805.00
850	INPUT HORSEPOWER	154.70	199.00	128.00	102.00	116.00	60.00
	OUTPUT TORQUE IN. LBS.	11,466.00	14,755.00	12,694.00	11,347.00	17,180.00	13,363.00
	INPUT O.H.L. †	296.00	570.00	319.00	326.00	250.00	292.00
	OUTPUT O.H.L. ‡	1185.00	918.00	1244.00	1980.00	1199.00	3216.00
690	INPUT HORSEPOWER	127.80	164.50	106.00	85.00	97.00	49.00
	OUTPUT TORQUE IN. LBS.	11,670.00	15,025.00	12,900.00	11,551.00	17,584.00	13,521.00
	INPUT O.H.L. †	437.00	714.00	396.00	391.00	340.00	392.00
	OUTPUT O.H.L. ‡	1473.00	1197.00	1297.00	2081.00	1290.00	3591.00
400	INPUT HORSEPOWER	77.20	99.70	63.00	50.00	57.00	30.00
	OUTPUT TORQUE IN. LBS.	12,160.00	15,709.00	13,270.00	11,893.00	18,000.00	14,197.00
	INPUT O.H.L. †	872.00	1153.00	759.00	777.00	532.00	713.00
	OUTPUT O.H.L. ‡	2354.00	2050.00	2137.00	3001.00	1905.00	4200.00
300	INPUT HORSEPOWER	59.00	76.30	48.00	39.00	44.00	22.50
	OUTPUT TORQUE IN. LBS.	12,390.00	16,029.00	13,453.00	12,057.00	18,479.00	14,267.00
	INPUT O.H.L. †	1148.00	1431.00	911.00	932.00	692.00	910.00
	OUTPUT O.H.L. ‡	2911.00	2594.00	2594.00	3475.00	2668.00	4200.00
100	INPUT HORSEPOWER	21.00	27.00	17.00	14.00	16.00	7.70
	OUTPUT TORQUE IN. LBS.	13,230.00	17,017.00	14,184.00	13,087.00	20,281.00	14,600.00
	INPUT O.H.L. †	2495.00	2813.00	1012.00	1079.00	820.00	1236.00
	OUTPUT O.H.L. ‡	4200.00	4200.00	4200.00	4200.00	4200.00	4200.00
WR2 (Lb. In.2) REFERRED TO HIGH SPEED SHAFT	STYLE						
	A, B	422.5	691.7	181.6	176.9	152.2	95.9
	C, D, E, F	416.2	685.5	178.0	174.2	150.6	95.2
	G	614.1	1018.2	264.4	270.6	229.9	135.4
WR2 (Lb. In.2) REFERRED TO LOW SPEED SHAFT	STYLE						
	A, B	422.5	691.7	321.2	398.1	608.6	862.8
	C, D, E, F	416.2	685.5	315.0	391.9	602.4	856.6
	G	614.1	1018.2	467.6	608.8	919.6	1218.2
	GG	627.1	1031.1	471.2	560.4	881.4	1345.2

† FOR HIGHER INPUT SPEEDS CONSULT FACTORY.  
‡ OVERHUNG LOAD IN LBS. AT CENTER OF SHAFT EXTENSIONS.

Δ MFG. TO ORDER - CONSULT FACTORY FOR PRICE AND DELIVERY

# Hub City™ Bevel Gear Drives

Model 1200



### ATTENTION

FOR CONTINUOUS DUTY APPLICATIONS ABOVE 1000 RPM THE CAPACITY OF THESE UNITS MAY BE LIMITED BY THERMAL CONSIDERATIONS. IN THESE CASES OIL CIRCULATION AND OIL COOLING MAY BE REQUIRED. CONSULT THE FACTORY FOR APPLICATION ASSISTANCE.

NOTE: STYLE G & GG

1. DIMENSIONS FOR SHAFTS A, A1, AND A2 ARE IDENTICAL FOR ALL RATIOS.
2. CENTERLINE TO END OF SHAFT DIMENSIONS WILL VARY. REQUEST CERTIFIED DIMENSIONAL PRINTS.

DIMENSIONS SHOWN ARE FOR REFERENCE ONLY.

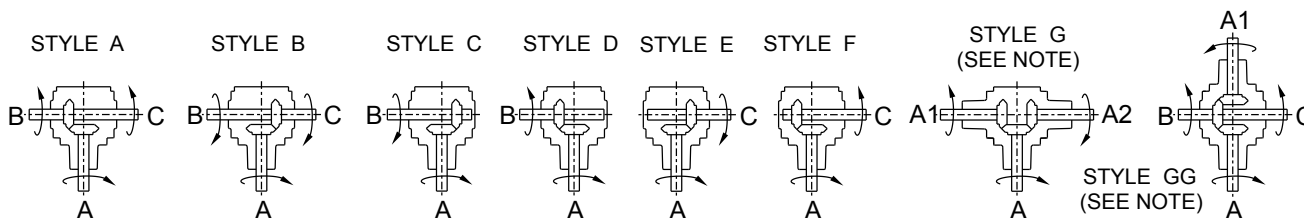
DOWNLOAD AVAILABLE CAD MODELS AT: [WWW.HUBCITYINC.COM](http://WWW.HUBCITYINC.COM)

FOR LUBRICATION AND INSTALLATION INSTRUCTIONS - REFER TO SECTION M

### DRY SHIPPING WEIGHTS

<b>STYLES A, B, C, D, E, F</b> .....	<b>300 lbs.</b>
<b>STYLES G</b> .....	<b>315 lbs.</b>
<b>STYLES GG</b> .....	<b>330 lbs.</b>

## Standard Styles Available



CONSULT FACTORY FOR VERTICAL SHAFT LUBRICATION RECOMMENDATIONS  
INPUT SHAFT CAN BE ROTATED IN EITHER DIRECTION