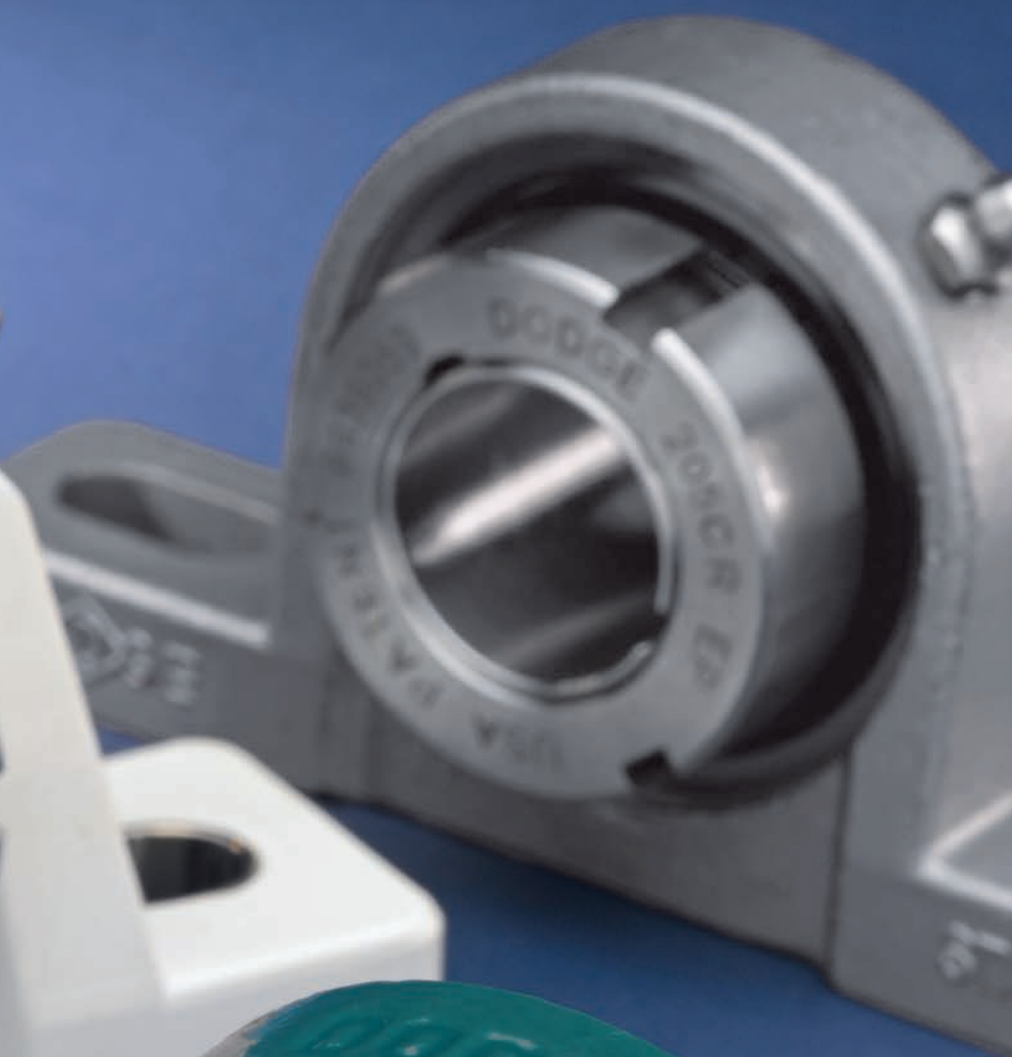


Grip Tight® Ball Bearings

BALDOR • DODGE®



BALDOR
A MEMBER OF THE ABB GROUP



Dodge Grip Tight® Mounted Ball Bearings...

With All The Advantages, Why Consider Anything Else?

Dodge® proudly presents a totally different ball bearing with a name that says it all: Grip Tight.

With its pull/push adapter system, fully concentric 360° inner ring, and completely interchangeable housing design, the new Dodge Grip Tight ball bearing is the easy-on/easy-off solution for damage-free shafting, reduced vibration and greater cost/inventory savings.

The Grip Tight ball bearing is shaft-ready right out of the box and offered in a variety of housing styles for normal and medium duty operations. It accommodates commercial grade and some undersized shafting to lower costs, and all Grip Tight assemblies fit into a standard Dodge ball bearing housing.

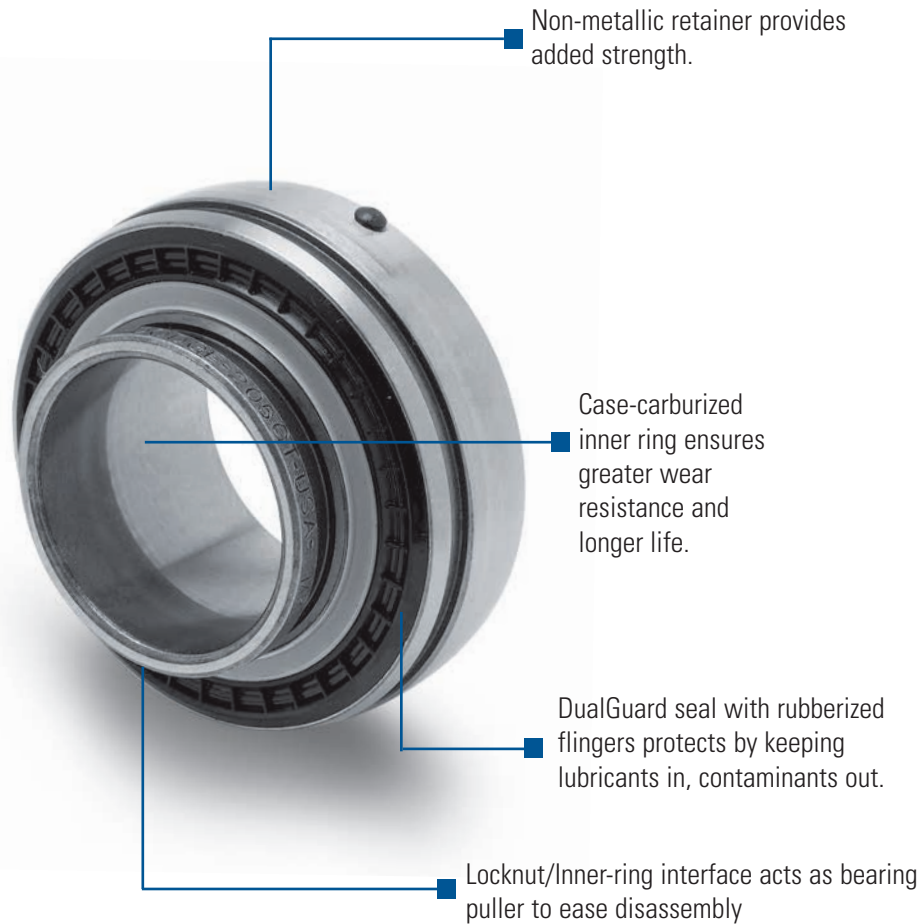
Plus, this Dodge bearing has been specifically engineered to run at higher speeds and operate cooler for longer grease life.

In test comparisons, the Dodge Grip Tight bearing even proved it could suppress fretting corrosion and scarring to shafts and journals, thus saving not only time but also labor and maintenance costs.



DODGE®

Grip Tight® Advancements



Full Contact on Shaft for Better Grip, Less Vibration

Set screw locking can distort the inner ring and cause system-induced vibrations. But with Dodge Grip Tight*, the adapter attaches itself to the shaft for full concentric contact-360° through the length of the bearing.

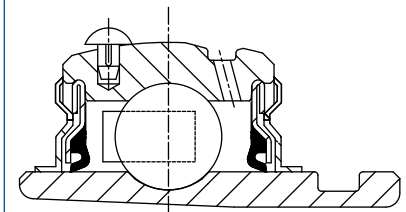
*Patent Numbers 6,939,053 & 7,305,767



- Available in 1/2" - 3-1/2" (17 mm - 85 mm) sizes, normal and medium duty
- Grade 10 balls for quiet operation
- Higher speed capability
- Self-Aligning
- Cooler operation for longer grease life
- Useable with commercial grade and undersized shafting

Dodge DualGuard Seal

DualGuard seal with rubberized flingers, a combination contact land-riding seal and labyrinth, keeps lubricants in, contaminants out.



That Lower Your Total Cost of Ownership

Grip Tight Family

Off-the-shelf and shaft ready, the Dodge Grip Tight ball bearing is offered for normal and medium duty in a variety of housing styles, including pillow block; tapped base; two-, three-, and four-bolt flange; piloted flange; take-up; and E-Z Kleen® designs.

This versatility lets you select the proper Grip Tight bearing for your specific application.



Typical fretting corrosion and shaft damage with set screw bearing



No fretting corrosion or shaft damage with Grip Tight Bearing Assembly

Damage Free Shafting

The Dodge Grip Tight bearing features a unique adapter-mount design that is specifically developed to withstand the axial forces that are generated during mounting or dismounting. The adapter provides superior holding power, as well as suppresses fretting corrosion and vibration.

Test Results

In test comparisons, a setscrew mounted bearing promotes shaft fretting corrosion and scarring. But, the Dodge Grip Tight bearing comes off the shaft quickly and reveals no shaft fretting corrosion or scarring. With this bearing, there is no need to recondition your shafting so you save time and avoid added labor/maintenance costs.

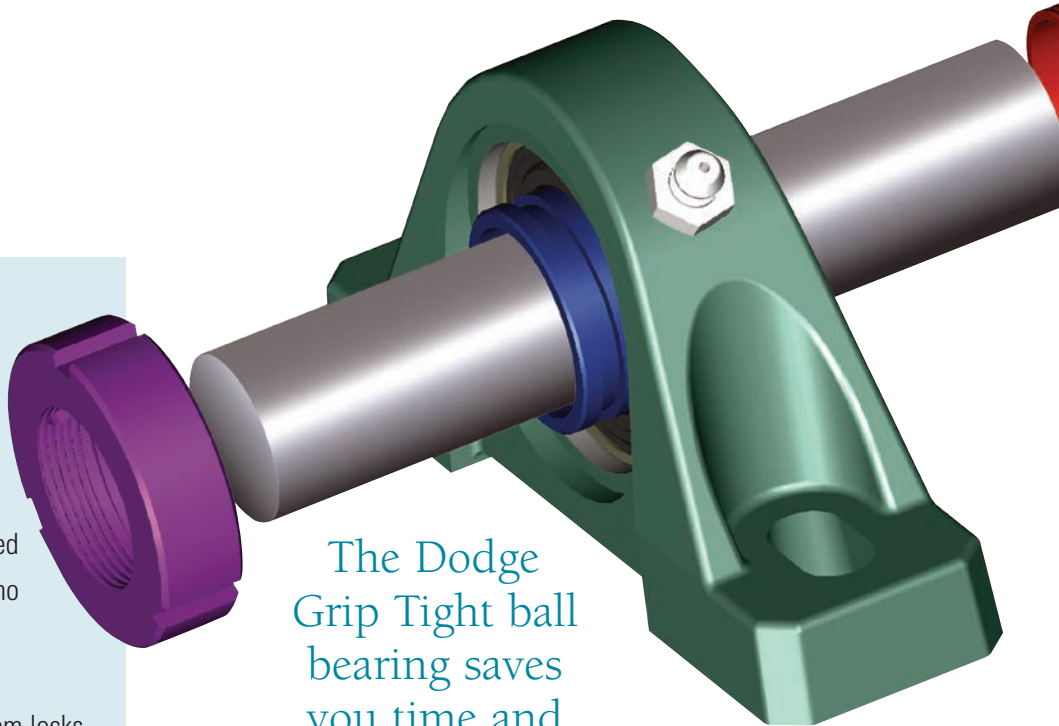


Grip Tight® Advancements

Easy On, Easy Off

Like the Dodge Imperial bearing, the Dodge Grip Tight ball bearing is shaft-ready right out of the box. It can be installed or removed quickly, because there is no assembly and no special tools needed for installation.

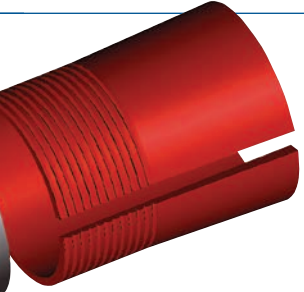
During mounting, the collar/inner ring system locks the tapered adapter sleeve under the bearing and onto the shaft. To dismount, the built-in bearing puller pulls the bearing off the adapter and pushes the adapter in the opposite direction (out from under the bearing).



The Dodge Grip Tight ball bearing saves you time and money with its “EASY ON, EASY OFF” design!



That Lower Your Total Cost of Ownership



Less Product Inventory for Significant Cost Savings

With the Dodge Grip Tight ball bearing, you can reduce your inventory as much as 25%-45%. Rather than inventory a complete line of individual bore sizes for each housing style, you can now purchase a housing assembly and adapters separately, with the adapter determining the bore size within a housing series.



Series	Shaft Size	Complete Unit Description	Unit w/o Adapter Description	Adapter/Nut Assembly Description
206	1	P2B-GTM-100	P2B-GT-06	AN-GTM-06-100
	25mm	P2B-GTM-25M		AN-GTM-06-25M
	1-1/8	P2B-GT-102		AN-GT-06-102
	1-3/16	P2B-GT-103		AN-GT-06-103
	1-1/4	P2B-GT-104S		AN-GT-06-104
	30mm	P2B-GT-30M		AN-GT-06-30M



P.O. Box 2400, Fort Smith, AR 72902-2400 U.S.A., Ph: (1) 479.646.4711, Fax (1) 479.648.5792, International Fax (1) 479.648.5895

Baldor - Dodge

6040 Ponders Court, Greenville, SC 29615-4617 U.S.A., Ph: (1) 864.297.4800, Fax: (1) 864.281.2433

www.baldor.com