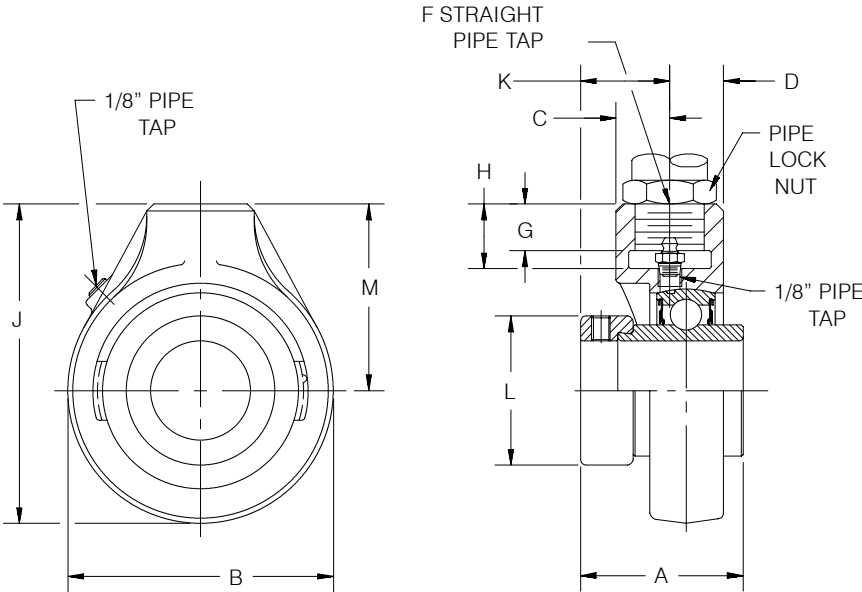


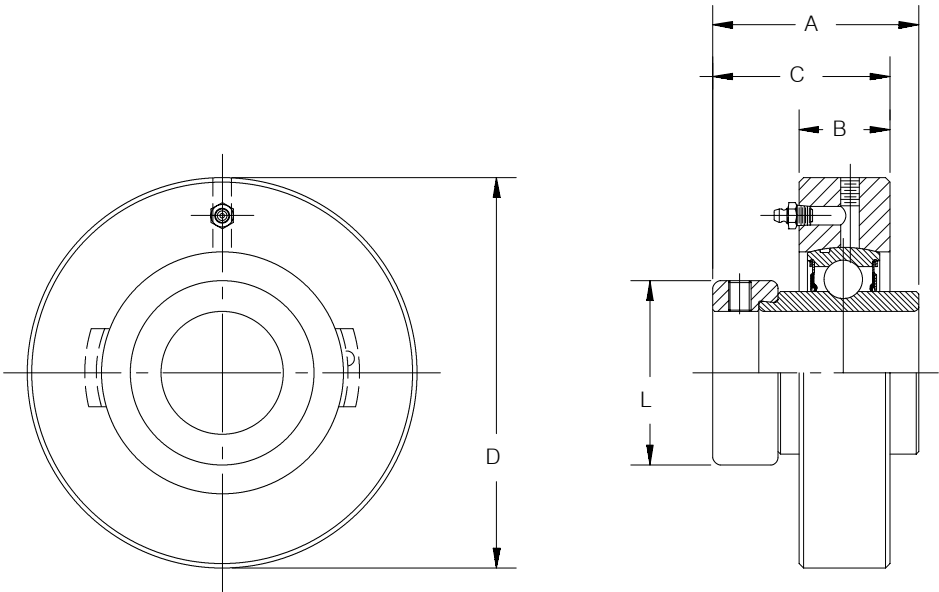
SELECTION/DIMENSIONS

Eccentric Collar Ball Bearings

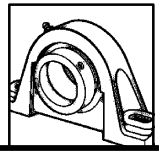
SXR NORMAL DUTY SCREW CONVEYOR HANGER BEARINGS



SXR NORMAL DUTY CYLINDRICAL UNITS



<p>FEATURE/BENEFITS ECCENTRIC COLLAR BALL BRGS PAGE B3-2</p>	<p>HOW TO ORDER/ NOMENCLATURE PAGE B3-4</p>	<p>SELECTION PAGE B3-5</p>	<p>DIMENSIONS SXR INSERTS PAGE B3-70</p>
--	---	--------------------------------	--



SELECTION/DIMENSIONS

Eccentric Collar Ball Bearings

SXR NORMAL DUTY SCREW CONVEYOR HANGER BEARINGS

Series	Size	Number	Description	Weight lbs.	A	B	C	D
206	1-1/8	@	SCHB-SXR-102	3.1	1-29/32	3-1/8	53/64	47/64
207	1-1/4 1-3/8	@ @	SCHB-SXR-104 SCHB-SXR-106	3.7 3.5	2-1/64	3-7/8	53/64	53/64
208	1-1/2	131317	SCHB-SXR-108	4.0	2-7/32	4	53/64	53/64
210	1-15/16 2	131325 131327	SCHB-SXR-115 SCHB-SXR-200	5.5 5.3	2-15/32	4-5/8	15/16	7/8
212	2-1/4 2-7/16	@ 131335	SCHB-SXR-204 SCHB-SXR-207	9.4 9.2	3-1/16	5-1/2	1-5/32	1-5/32

NOTE: Inserts use the ProGuard Plus (FF) seal.

@ Assembled to order.

Series	Size	F*	G	H	J	K	L	M
206	1-1/8	3/4-14	3/4	15/16	4-1/16	1-3/16	1-3/4	2-1/2
207	1-1/4 1-3/8	3/4-14	5/8	15/16	4-11/16	1.274	2-1/8	2-3/4
208	1-7/16 1-1/2 1-5/8	3/4 - 14	5/8	15/16	4-7/8	1-3/8	2-3/8	2-7/8
210	1-15/16 2	1 - 11-1/2	13/16	1-1/8	5-9/16	1-1/2	2-3/4	3-1/4
212	2-1/4 2-7/16	1-1/4 - 11-1/2	1-1/8	1-7/16	6-3/4	1-27/32	3-5/16	4

*Use straight thread for the pipe. Bearing to be secured with a heavy locknut. Pipe plug and lube fitting are factory installed and may be reversed from the position shown.

SXR NORMAL DUTY CYLINDRICAL UNITS

Series	Shaft Size	Part Number	Description	Weight lbs.	A	B	C	D**	L
205	7/8 15/16 1	131356 131357 131358	CYL-SXR-014 CYL-SXR-015 CYL-SXR-100	1.4 1.3 1.2	1-3/14	27/32	1-11/64	3-1/8	1-1/2
206	1-1/16 1-1/8 1-3/16 1-1/4	131359 131360 131361 @	CYL-SXR-101 CYL-SXR-102 CYL-SXR-103 CYL-SXR-104S	2.2 2.1 2.0 1.9	1-29/32	15/16	1-11/32	3-1/2	1-3/4
207	1-1/4 1-5/16 1-3/8 1-7/16	131363 131364 131365 131366	CYL-SXR-104 CYL-SXR-105 CYL-SXR-106 CYL-SXR-107	2.8 2.7 2.6 2.5	2-1/64	1-1/16	1-17/32	3-7/8	2-1/8

@ Assembled to order.

** +000"-.002"

To prevent the housing from rotating in the machine frame, tap a hole on the joint between the housing O.D. and the machine frame bore and lock with a setscrew.

MODIFICATIONS PAGE B3-74	RELATED PRODUCTS PAGE B3-75		
-----------------------------	--------------------------------	--	--