



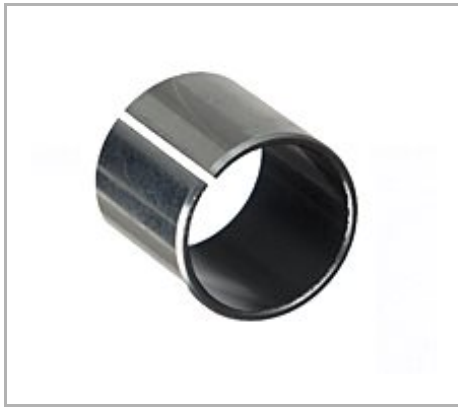
ISOSTATIC
LEADERS IN BRONZE BEARINGS...and MORE

Isostatic Industries, Inc.
4153 North Kostner Avenue
Chicago, IL 60641
Toll Free: 800.621.5500
Phone: 773.286.3444
Fax: 773.282.3323
Email: info@isostatic.com

Item # 501056, TU® Steel-Backed PTFE Lined Sleeve Bearings - INCH

Isostatic TU® Sleeve Bearings

- Standard stock products
- Self-lubricating dry sliding bearing
- A steel-backed composite material comprised of:
 - Low carbon steel backing for extremely high load capacity-.50 – 2.7mm thick
 - Sintered bronze offers optimal heat dispersion –.20 - .35 mm thickness and
 - PTFE – lead sliding surface creates a low friction coefficient and allows for a wide temperature range – thickness .2 mm
- Can be used where many liquid lubricants fail; also performs well with lubrication



[+ more](#)

[Description](#) | [Specifications](#) | [Dimensions](#) | [Tolerances](#) | [Performance Data](#)

Description

Detailed Description

1 IN I.D. x 1.125 IN O.D. x 1.5000 IN Length, TU, Steel Back, PTFE & Pb Lined Composite, Sleeve Bearing

Specifications

Catalog Number	16TU24
Interchange #	16DU24 PAPZ 1624 P10
Unit of Measure	Each
Material	Steel-Backed PTFE Lined
Material Standard	Steel-Backed PTFE Lined

Avg Unit Weight	0.0852 lb
UPC Code	00846802053208

Dimensions

Nominal Inner Diameter	1 in
Nominal Outer Diameter	1 1/8 in
Nominal Length	1 1/2 in
Recommended Shaft Size	.9979 to .9991 in
Recommended Housing Bore	1.1247 to 1.1255 in

Tolerances

Overall Length Tolerance	±.01 in
---------------------------------	---------

Performance Data

Load - P Max Value	36,250 lb/in ²
Speed - V Max Value	1,900 ft ² /min
Load at Speed - PV Max Value (P.S.I. / S.F.M.)	102,000