

# T900 SERIES

PHOTOELECTRIC & 7 DAY CONTROL COMBO  
DIFFERENT SCHEDULES EACH DAY  
RESERVE POWER STANDARD  
2 & 3 CIRCUIT CONTROL CENTERS

## APPLICATIONS

- Parking lot lighting
- HVAC
- Display lighting
- Security lighting
- Lighted signage
- Storefront lighting



Optional "E" cover



Model 2101  
supplied with unit.

## FEATURES

### SCHEDULING:

**CIRCUIT 1:** ON automatically at dusk, OFF at individual preset times each day, including skipping days when desired. Unit can be set to turn ON before dawn for early morning lighting.

**CIRCUIT 2:** ON at dusk, OFF at dawn automatically, daily.

**CIRCUIT 3:** Individual daily ON and OFF settings at desired times, including skipping any desired day or days Minimum ON is setting 1 hour with a minimum OFF setting of 2 hours. Minimum 8 hours between 2 OFF settings. 7 day calendar dial will accommodate up to 2 pairs of ON-OFF trippers per day – 7 pairs are supplied.

**SKIP-A-DAY:** Omit operations on any day.

**MANUAL BY-PASS SWITCHES:** Single pole, 20 Amps – one per circuit. Factory pre-wired to terminal strip. ON/OFF/AUTO positions for each circuit is independent – will not disturb automatic settings.

**RESERVE POWER:** Standard feature on all models keep dial on time up to 24 hours during power outage.

**OPTIONAL ENCLOSURES:** Contact factory for available options and lead time.

CAT. NO.	UPC CODE	INPUT SUPPLY (VAC) 60Hz	OUTPUT CONTACTS	ENCLOSURE TYPE
T920L	41033	120	2 SPDT	Metal Indoor NEMA 1
T930L	41055	120	3 SPDT	Metal Indoor NEMA 1
Replacement Trippers		#P69 for 7 pairs of ON/OFF trippers.		
Replacement Motor		#36 (120V)		
Replacement Bypass Switch		#66061		

TYPE	VOLTAGE (VAC)	CONTACT RATING
General Purpose	120/277	20A
Motor	120 240	1HP 2HP

**NOTE:** All models are designed to control a contactor circuit and are not recommended for direct switching of most lighting loads.

## SPECIFICATIONS

**INPUT VOLTAGE:** 120, 60 Hz

**TIMING ACCURACY:** Line frequency.

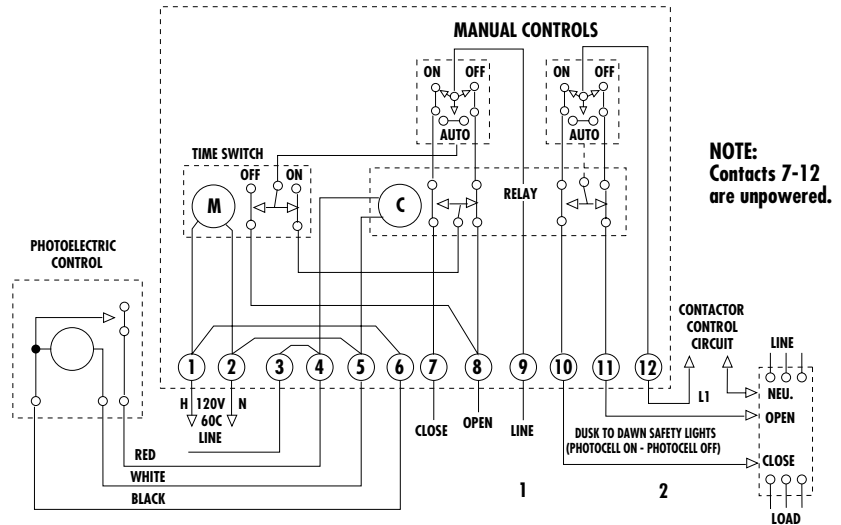
**TERMINAL RANGE:** #8 - #14AWG.

**OPERATING TEMPERATURE:**  
-40° to 165°F (-40° to +74°C).

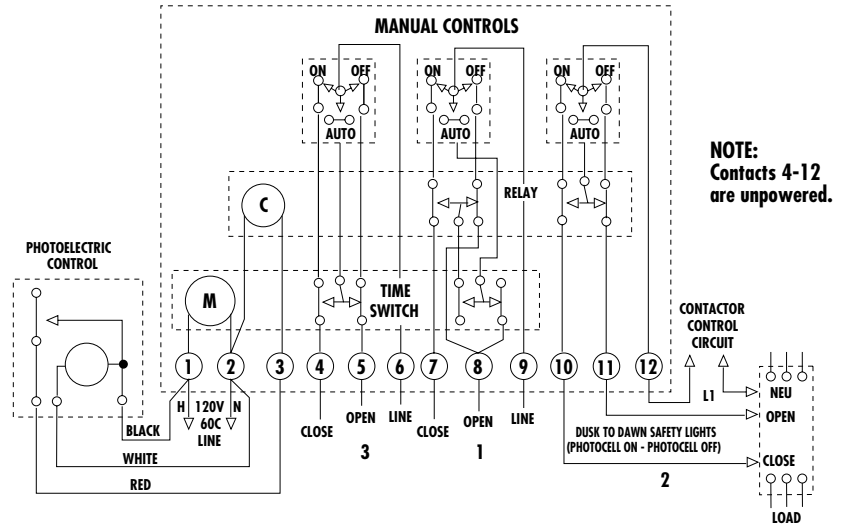
**POWER CONSUMPTION:**  
5 watts maximum.

**ENCLOSURE:** Indoor NEMA 1 Metal with lockable hasp. (See pages 589-593 for dimensions).

### T920L ONLY CIRCUITS 1 AND 2 ARE INCLUDED IN T920L



### T930L ALL 3 CIRCUITS ARE INCLUDED IN T930L



**NOTE 1:** All models designed to control mechanically-held and magnetic contactors, when wired in accordance with manufacturers recommendations. Contacts are unpowered control circuits rated for 24-277V contactor coils. See notes on wiring schematics.

**NOTE 2:** For momentary Contact of contactor coils, use TORK Model SMC-3D, in our Digital Controls Catalog.