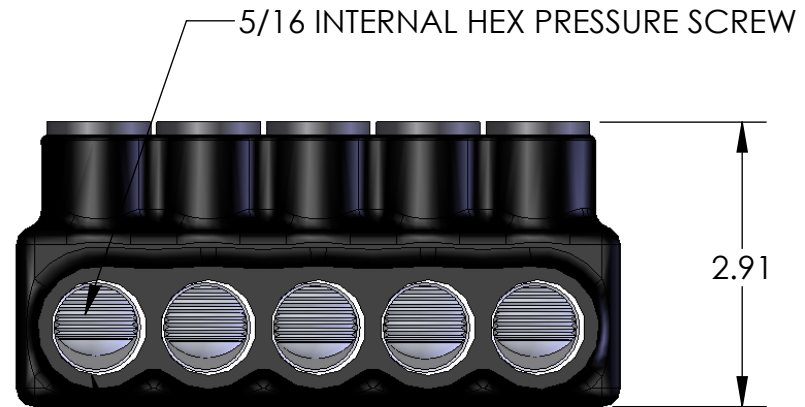
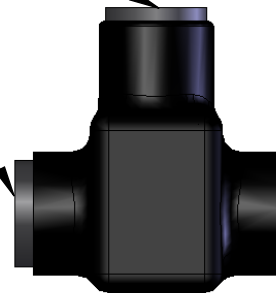


REMOVABLE CAP
TO TIGHTEN SCREW
(REPLACE WHEN COMPLETE)

REMOVABLE CAP
FOR DUAL ENTRY
(INSERT IN OTHER SIDE)

IPLD500-5 SHOWN

PART NUMBER	NO. OF PORTS	LENGTH
IPLD500-3	3	4.01
IPLD500-4	4	5.24
IPLD500-5	5	6.38
IPLD500-6	6	7.52
IPLD500-7	7	8.67
IPLD500-8	8	9.82
IPLD500-10	10	12.11
IPLD500-12	12	14.40



WIRE ENTRY POINT
WIRE RANGE: 500KCMIL - #4AWG
PRE-FILLED W/ OXIDE INHIBITOR

CONTACT NSI FOR SALES @ 800.321.5847

NOTES:

- CONNECTOR MANUFACTURED FROM 6061-T6 ALUMINUM ALLOY.
- UL LISTED PER UL486A/B SPECIFICATIONS FOR 600V.
- DUAL RATED FOR 90°C COPPER AND/OR ALUMINUM CONDUCTOR.
- COLD TEMPERATURE RATED TO -45°C.
- HIGH DIELECTRIC STRENGTH INSULATION IS ABRASION, CHEMICAL AND UV RESISTANT.

		POLARIS SALES CO. INC	
<small>PROPRIETARY AND CONFIDENTIAL</small>		<small>11625 PROSPEROUS DRIVE ODESSA, FL 33556</small>	
<small>THE INFORMATION CONTAINED IN THIS DRAWING IS THE SOLE PROPERTY OF POLARIS SALES CO. INC. ANY REPRODUCTION IN PART OR AS A WHOLE WITHOUT THE WRITTEN PERMISSION OF POLARIS SALES CO. INC. IS PROHIBITED.</small>		TITLE: INSULATED DUAL ENTRY 500 CONNECTOR	
<small>NAME</small>		<small>DATE</small>	
<small>DRAWN BY</small> S.PARRY		<small>DATE</small> 6/2012	
<small>MATERIAL:</small> N/A		<small>DWG. NO.</small> IPLD500-SERIES	
<small>SCALE:</small> N/A		<small>SHEET:</small> 1 OF 1	