

COMPRESSION CONNECTORS

Long Barrel Copper Lugs

Two Hole

LN SERIES



FEATURES

- Produced from high conductivity copper tubing.
- Allows easy inspection of the termination to assure complete cable insertion.
- Tin-plated to provide corrosion and low contact resistance.
- Marked with die index and color coded.
- Listed for 35KV maximum when properly installed.
- For applications greater than 2000V, installed to cable manufacturer for voltage stress relief instructions.
- Additional mounting hole spacing options available on request.

NOTE: Part Numbers ending in "P" have a "peep" or sight inspection hole.

RATINGS



UL486A/B Listed.

UL467 Grounding & Bonding (Sizes 8 AWG - 3/0 AWG)

Max ampacity is based on NEC 310.15, insulation type, and conductor material. Please consult your current NEC manual.

* CLASS B OR C BUILDING WIRE CU CABLE ONLY

TEMPERATURE RATING:

90 °C.

RATING:

600V



Scan QR to view
Tool & Die Charts

All dimensional data is listed in inches.

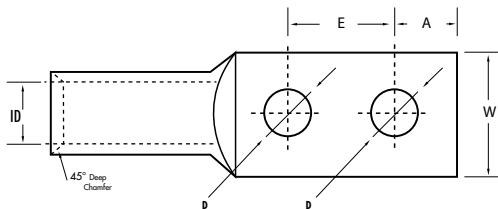
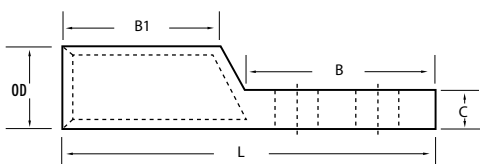
CAT. NO.	WIRE RANGE	EXPANDED WIRE RANGE*
L8N-14	8 AWG	8 - 10 AWG
L8N-14P	8 AWG	8 - 10 AWG
L8N-141	8 AWG	8 - 10 AWG
L8N-141P	8 AWG	8 - 10 AWG
L8N-142	8 AWG	8 - 10 AWG
L8N-142P	8 AWG	8 - 10 AWG
L8N-38	8 AWG	8 - 10 AWG
L8N-38P	8 AWG	8 - 10 AWG
L8N-383	8 AWG	8 - 10 AWG
L8N-383P	8 AWG	8 - 10 AWG
L8N-563	8 AWG	8 - 10 AWG
L8N-563P	8 AWG	8 - 10 AWG
L6N-12	6 AWG	6 - 8 AWG
L6N-14	6 AWG	6 - 8 AWG
L6N-14P	6 AWG	6 - 8 AWG
L6N-141	6 AWG	6 - 8 AWG
L6N-141P	6 AWG	6 - 8 AWG
L6N-142	6 AWG	6 - 8 AWG
L6N-142P	6 AWG	6 - 8 AWG
L6N-38	6 AWG	6 - 8 AWG
L6N-38P	6 AWG	6 - 8 AWG
L6N-382	6 AWG	6 - 8 AWG
L6N-382P	6 AWG	6 - 8 AWG
L6N	6 AWG	6 - 8 AWG
L6NP	6 AWG	6 - 8 AWG
L4N-14	4 AWG	4 - 6 AWG
L4N-14P	4 AWG	4 - 6 AWG
L4N-141	4 AWG	4 - 6 AWG
L4N-141P	4 AWG	4 - 6 AWG
L4N-142	4 AWG	4 - 6 AWG
L4N-142P	4 AWG	4 - 6 AWG
L4N-38	4 AWG	4 - 6 AWG
L4N-38P	4 AWG	4 - 6 AWG
L4N-382	4 AWG	4 - 6 AWG
L4N-382P	4 AWG	4 - 6 AWG
L4N	4 AWG	4 - 6 AWG

*EXPANDED WIRE RANGE when installed with NSI N12ID dieless compression tool. UL Listed with other tools:

FOR TOOL & DIE CRIMPING INFORMATION, PLEASE SEE TABLE ON PAGE 143



COLOR	BOLT SIZE	MTG. HOLE SPACING (E)	I.D.	O.D.	LENGTH (L)	WIDTH (W) (IN.)	END OF CONN TO CTR. (A)	TANG LENGTH (B)	BARREL LENGTH (B1)	TANG THICKNESS (C)	MTG. HOLE DIA. (D)	STD. CTN. QTY.
Red	1/4"	1.000	0.205	0.295	2.240	0.420	0.280	1.140	0.980	0.080	0.261	100
Red	1/4"	1.000	0.205	0.295	2.240	0.420	0.280	1.140	0.980	0.080	0.261	100
Red	1/4"	0.625	0.205	0.295	2.240	0.420	0.280	1.140	0.980	0.080	0.261	100
Red	1/4"	0.625	0.205	0.295	2.240	0.420	0.280	1.140	0.980	0.080	0.261	100
Red	1/4"	0.750	0.205	0.295	2.240	0.420	0.280	1.140	0.980	0.080	0.261	100
Red	1/4"	0.750	0.205	0.295	2.240	0.420	0.280	1.140	0.980	0.080	0.261	100
Red	3/8"	1.000	0.205	0.295	2.240	0.420	0.280	1.140	0.980	0.080	0.410	100
Red	3/8"	1.000	0.205	0.295	2.240	0.420	0.280	1.140	0.980	0.080	0.410	100
Red	3/8"	1.750	0.205	0.295	2.240	0.420	0.280	1.140	0.980	0.080	0.410	100
Red	3/8"	1.750	0.205	0.295	2.240	0.420	0.280	1.140	0.980	0.080	0.410	100
Blue	5/16"	1.750	0.205	0.295	2.240	0.420	0.280	1.140	0.980	0.080	0.312	100
Blue	5/16"	1.750	0.205	0.295	2.240	0.420	0.280	1.140	0.980	0.080	0.312	100
Blue	1/4"	0.500	0.200	0.300	2.240	0.420	0.280	1.140	0.980	0.080	0.261	100
Blue	1/4"	0.625	0.200	0.300	2.360	0.420	0.280	1.260	0.980	0.080	0.261	100
Blue	1/4"	0.625	0.200	0.300	2.360	0.420	0.280	1.260	0.980	0.080	0.261	100
Blue	1/4"	0.625	0.200	0.300	2.480	0.420	1.260	1.380	0.980	0.080	0.261	100
Blue	1/4"	0.625	0.200	0.300	2.480	0.420	1.260	1.380	0.980	0.080	0.261	100
Blue	1/4"	0.750	0.200	0.300	2.480	0.420	0.280	1.380	0.980	0.080	0.261	100
Blue	1/4"	0.750	0.200	0.300	2.480	0.420	0.280	1.380	0.980	0.080	0.261	100
Blue	3/8"	1.000	0.200	0.300	2.910	0.420	0.380	1.810	0.980	0.080	0.410	100
Blue	3/8"	1.000	0.200	0.300	2.910	0.420	0.380	1.810	0.980	0.080	0.410	100
Blue	3/8"	0.750	0.200	0.300	4.090	0.870	0.620	2.990	0.980	0.120	0.410	100
Blue	3/8"	0.750	0.200	0.300	4.090	0.870	0.620	2.990	0.980	0.120	0.410	100
Blue	1/2"	1.750	0.200	0.300	4.090	0.870	0.620	2.990	0.980	0.120	0.510	100
Blue	1/2"	1.750	0.200	0.300	4.090	0.870	0.620	2.990	0.980	0.120	0.510	100
Gray	1/4"	0.625	0.250	0.340	2.360	0.490	0.280	1.260	0.980	0.090	0.261	100
Gray	1/4"	0.625	0.250	0.340	2.360	0.490	0.280	1.260	0.980	0.090	0.261	100
Gray	1/4"	0.625	0.250	0.340	2.95	0.420	0.380	1.810	0.980	0.90	0.261	100
Gray	1/4"	0.625	0.250	0.340	2.950	0.420	0.380	1.810	0.980	0.090	0.261	100
Gray	1/4"	0.625	0.250	0.340	2.95	0.420	0.380	1.810	0.980	0.90	0.261	100
Gray	1/4"	0.625	0.250	0.340	2.950	0.420	0.380	1.810	0.980	0.090	0.261	100
Gray	3/8"	1.000	0.250	0.340	2.950	0.420	0.380	1.810	0.980	0.090	0.410	100
Gray	3/8"	1.000	0.250	0.340	2.950	0.420	0.380	1.810	0.980	0.090	0.410	100
Gray	3/8"	0.750	0.250	0.340	4.090	0.870	0.620	2.990	0.980	0.120	0.410	100
Gray	3/8"	0.750	0.250	0.340	4.090	0.870	0.620	2.990	0.980	0.120	0.410	100
Gray	1/2"	1.750	0.250	0.340	4.090	0.870	0.620	2.990	0.980	0.120	0.510	100



COMPRESSION CONNECTORS

Long Barrel Copper Lugs

Two Hole

LN SERIES CONTINUED



FEATURES

- Produced from high conductivity copper tubing.
- Allows easy inspection of the termination to assure complete cable insertion.
- Tin-plated to provide corrosion and low contact resistance.
- Marked with die index and color coded.
- Listed for 35KV maximum when properly installed.
- For applications greater than 2000V, installed to cable manufacturer for voltage stress relief instructions.
- Additional mounting hole spacing options available on request.

NOTE: Part Numbers ending in "P" have a "peep" or sight inspection hole.

RATINGS



UL486A/B Listed.

UL467 Grounding & Bonding (Sizes 8 AWG - 3/0 AWG)

Max ampacity is based on NEC 310.15, insulation type, and conductor material. Please consult your current NEC manual.

* CLASS B OR C BUILDING WIRE CU CABLE ONLY

TEMPERATURE RATING:

90 °C.

RATING:

600V

All dimensional data is listed in inches.

CAT. NO.	WIRE RANGE	EXPANDED WIRE RANGE*
L4N-P	4 AWG	4 - 6 AWG
L2N-14	2 AWG	2 - 6 AWG
L2N-14P	2 AWG	2 - 6 AWG
L2N-141	2 AWG	2 - 6 AWG
L2N-141P	2 AWG	2 - 6 AWG
L2N-142	2 AWG	2 - 6 AWG
L2N-38	2 AWG	2 - 6 AWG
L2N-38P	2 AWG	2 - 6 AWG
L2N-382	2 AWG	2 - 6 AWG
L2N-382P	2 AWG	2 - 6 AWG
L2N-383	2 AWG	2 - 6 AWG
L2N-383P	2 AWG	2 - 6 AWG
L2N-56	2 AWG	2 - 6 AWG
L2N	2 AWG	2 - 6 AWG
L2N-P	2 AWG	2 - 6 AWG
L1N-141	1 AWG	1 - 6 AWG
L1N-38	1 AWG	1 - 6 AWG
L1N-56	1 AWG	1 - 6 AWG
L1N	1 AWG	1 - 6 AWG
L10N-14	1/0 AWG	1/0 - 6 AWG
L10N-14P	1/0 AWG	1/0 - 6 AWG
L10N-38	1/0 AWG	1/0 - 6 AWG
L10N-38P	1/0 AWG	1/0 - 6 AWG
L10N-382	1/0 AWG	1/0 - 6 AWG
L10N-382P	1/0 AWG	1/0 - 6 AWG
L10N-383	1/0 AWG	1/0 - 6 AWG
L10N-383P	1/0 AWG	1/0 - 6 AWG
L10N	1/0 AWG	1/0 - 6 AWG
L10N-P	1/0 AWG	1/0 - 6 AWG
L20N-14	2/0 AWG	2/0 - 4 AWG
L20N-141	2/0 AWG	2/0 - 4 AWG
L20N-141P	2/0 AWG	2/0 - 4 AWG
L20N-142	2/0 AWG	2/0 - 4 AWG
L20N-14P	2/0 AWG	2/0 - 4 AWG

*EXPANDED WIRE RANGE when installed with NSI NT21D dieless compression tool. UL Listed with other tools:

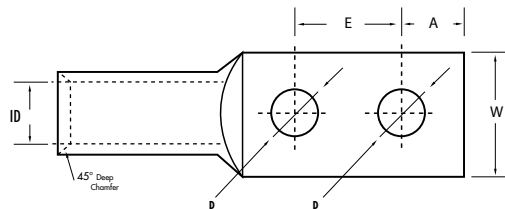
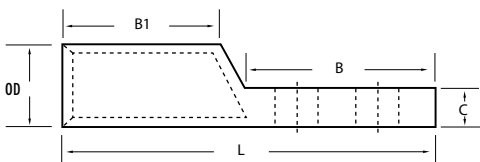
FOR TOOL & DIE CRIMPING INFORMATION, PLEASE SEE TABLE ON PAGE 143



Scan QR to view Tool & Die Charts



COLOR	BOLT SIZE	MTG. HOLE SPACING (E) (IN.)	I.D.	O.D.	LENGTH (L)	WIDTH (W) (IN.)	END OF CONN TO CTR. (A) (IN.)	TANG LENGTH (B) (IN.)	BARREL LENGTH (BT) (IN.)	TANG THICKNESS (C) (IN.)	MTG. HOLE DIA. (D) (IN.)	STD. CTN. QTY.
Gray	1/2"	1.750	0.250	0.340	4.090	0.870	0.620	2.990	0.980	0.120	0.510	100
Brown	1/4"	1.000	0.310	0.420	2.520	0.600	0.280	1.260	1.100	0.100	0.252	50
Brown	1/4"	1.000	0.310	0.420	2.520	0.600	0.280	1.260	1.100	0.100	0.252	50
Brown	1/4"	0.625	0.310	0.420	2.520	0.600	0.280	1.260	1.100	0.100	0.250	50
Brown	1/4"	0.625	0.310	0.420	2.520	0.600	0.280	1.260	1.100	0.100	0.250	50
Brown	1/4"	0.750	0.310	0.420	2.640	0.600	0.280	1.380	1.100	0.100	0.250	50
Brown	3/8"	1.000	0.310	0.420	3.070	0.600	0.380	1.810	1.100	0.100	0.410	50
Brown	3/8"	1.000	0.310	0.420	3.070	0.600	0.380	1.810	1.100	0.100	0.410	50
Brown	3/8"	0.750	0.310	0.420	4.250	0.810	0.620	2.990	1.100	0.100	0.410	50
Brown	3/8"	0.750	0.310	0.420	4.250	0.810	0.620	2.990	1.100	0.100	0.410	50
Brown	3/8"	1.750	0.310	0.420	4.250	0.810	0.620	2.990	1.100	0.100	0.410	50
Brown	3/8"	1.750	0.310	0.420	4.250	0.810	0.620	2.990	1.100	0.100	0.410	50
Brown	5/16"	0.750	0.310	0.420	2.870	0.600	0.320	1.610	1.100	0.100	0.330	50
Brown	1/2"	1.750	0.310	0.420	4.250	0.810	0.620	2.990	1.100	0.100	0.510	50
Brown	1/2"	1.750	0.310	0.420	4.250	0.810	0.620	2.990	1.100	0.100	0.510	50
Green	1/4"	0.630	0.360	0.470	2.560	0.670	0.280	1.260	1.100	0.110	0.250	50
Green	3/8"	1.000	0.360	0.470	3.070	0.670	0.380	1.810	1.100	0.110	0.410	50
Green	5/16"	0.870	0.360	0.470	2.930	0.670	0.320	1.610	1.100	0.110	0.330	50
Green	1/2"	1.750	0.360	0.470	4.290	0.750	0.620	2.990	1.100	0.100	0.510	50
Pink	1/4"	1.000	0.390	0.520	3.210	0.740	0.380	1.810	1.200	0.130	0.252	50
Pink	1/4"	1.000	0.390	0.520	3.210	0.740	0.380	1.810	1.200	0.130	0.252	50
Pink	3/8"	1.000	0.390	0.520	3.210	0.740	0.380	1.810	1.200	0.130	0.410	50
Pink	3/8"	1.000	0.390	0.520	3.210	0.740	0.380	1.810	1.200	0.130	0.410	50
Pink	3/8"	0.750	0.390	0.520	4.630	0.740	0.620	2.990	1.200	0.120	0.410	50
Pink	3/8"	0.750	0.390	0.520	4.630	0.740	0.620	2.990	1.200	0.120	0.410	50
Pink	3/8"	1.750	0.390	0.520	4.630	0.740	0.620	2.990	1.200	0.120	0.410	50
Pink	3/8"	1.750	0.390	0.520	4.630	0.740	0.620	2.990	1.200	0.120	0.410	50
Pink	1/2"	1.750	0.390	0.520	4.630	0.740	0.620	2.990	1.200	0.120	0.510	50
Pink	1/2"	1.750	0.390	0.520	4.630	0.740	0.620	2.990	1.200	0.120	0.510	50
Black	1/4"	0.625	0.440	0.560	2.990	0.810	0.280	1.380	1.380	0.120	0.252	25
Black	1/4"	0.625	0.440	0.560	2.990	0.810	0.280	1.380	1.380	0.120	0.252	25
Black	1/4"	0.750	0.440	0.560	2.990	0.810	0.280	1.380	1.380	0.120	0.252	25
Black	1/4"	0.750	0.440	0.560	2.990	0.810	0.280	1.380	1.380	0.120	0.250	25
Black	1/4"	0.625	0.440	0.560	2.990	0.810	0.280	1.380	1.380	0.120	0.252	25



COMPRESSION CONNECTORS

Long Barrel Copper Lugs

Two Hole

LN SERIES CONTINUED



FEATURES

- Produced from high conductivity copper tubing.
- Allows easy inspection of the termination to assure complete cable insertion.
- Tin-plated to provide corrosion and low contact resistance.
- Marked with die index and color coded.
- Listed for 35KV maximum when properly installed.
- For applications greater than 2000V, installed to cable manufacturer for voltage stress relief instructions.
- Additional mounting hole spacing options available on request.

NOTE: Part Numbers ending in "P" have a "peep" or sight inspection hole.

RATINGS



UL486A/B Listed.

UL467 Grounding & Bonding (Sizes 8 AWG - 3/0 AWG)

Max ampacity is based on NEC 310.15, insulation type, and conductor material. Please consult your current NEC manual.

* CLASS B OR C BUILDING WIRE CU CABLE ONLY

TEMPERATURE RATING:

90 °C.

RATING:

600V

All dimensional data is listed in inches.

CAT. NO.	WIRE RANGE	EXPANDED WIRE RANGE *
L20N-38	2/0 AWG	2/0 - 4 AWG
L20N-38P	2/0 AWG	2/0 - 4 AWG
L20N-383	2/0 AWG	2/0 - 4 AWG
L20N-383P	2/0 AWG	2/0 - 4 AWG
L20N	2/0 AWG	2/0 - 4 AWG
L20NP	2/0 AWG	2/0 - 4 AWG
L30N-141	3/0 AWG	3/0 - 2 AWG
L30N-141P	3/0 AWG	3/0 - 2 AWG
L30N-38	3/0 AWG	3/0 - 2 AWG
L30N-38P	3/0 AWG	3/0 - 2 AWG
L30N-56	3/0 AWG	3/0 - 2 AWG
L30N-56P	3/0 AWG	3/0 - 2 AWG
L30N	3/0 AWG	3/0 - 2 AWG
L30NP	3/0 AWG	3/0 - 2 AWG
L40N-141	4/0 AWG	4/0 - 1 AWG
L40N-141P	4/0 AWG	4/0 - 1 AWG
L40N-142	4/0 AWG	4/0 - 1 AWG
L40N-142P	4/0 AWG	4/0 - 1 AWG
L40N-38	4/0 AWG	4/0 - 1 AWG
L40N-38P	4/0 AWG	4/0 - 1 AWG
L40N-383	4/0 AWG	4/0 - 1 AWG
L40N-383P	4/0 AWG	4/0 - 1 AWG
L40N	4/0 AWG	4/0 - 1 AWG
L40NP	4/0 AWG	4/0 - 1 AWG
L250N	250 MCM	250 MCM - 1/0 AWG
L250N-38	250 MCM	250 MCM - 1/0 AWG
L300N	300 MCM	300 MCM - 2/0 AWG
L350N	350 MCM	350 MCM - 3/0 AWG
L350N-38	350 MCM	350 MCM - 3/0 AWG
L400N	400 MCM	400 MCM - 4/0 AWG
L500N	500 MCM	500 - 250 MCM
L500N-38	500 MCM	500 - 250 MCM
L600N	600 MCM	600 - 250 MCM
L600N-38	600 MCM	600 - 250 MCM
L750N	750 MCM	750 - 500 MCM
L750N-38	750 MCM	750 - 500 MCM
L1000N	1000 MCM	

FOR TOOL & DIE CRIMPING INFORMATION,
PLEASE SEE TABLE ON PAGE 143



Scan QR to view
Tool & Die Charts



COLOR	BOLT SIZE	MTG. HOLE SPACING (E)	I.D.	O.D.	LENGTH (L)	WIDTH (W)	END OF CONN TO CTR. (A)	TANG LENGTH (B)	BARREL LENGTH (B1)	TANG THICKNESS (C)	MTG. HOLE DIA. (D)	STD. CTN. QTY.
Black	3/8"	1.000	0.440	0.560	3.430	0.810	0.380	1.810	1.380	0.120	0.410	25
Black	3/8"	1.000	0.440	0.560	3.430	0.810	0.380	1.810	1.380	0.120	0.410	25
Black	3/8"	1.750	0.440	0.560	3.430	0.810	0.380	1.810	1.380	0.120	0.410	25
Black	3/8"	1.750	0.440	0.560	3.430	0.810	0.380	1.810	1.380	0.120	0.410	25
Black	1/2"	1.750	0.440	0.560	4.610	0.810	0.620	2.990	1.380	0.120	0.510	25
Black	1/2"	1.750	0.440	0.560	4.610	0.810	0.620	2.990	1.380	0.120	0.510	25
Orange	1/4"	0.625	0.490	0.620	3.500	0.900	0.380	1.810	1.380	0.130	0.252	25
Orange	1/4"	0.625	0.490	0.620	3.500	0.900	0.380	1.810	1.380	0.130	0.252	25
Orange	3/8"	1.000	0.490	0.620	3.500	0.900	0.380	1.810	1.380	0.130	0.410	25
Orange	3/8"	1.000	0.490	0.620	3.500	0.900	0.380	1.810	1.380	0.130	0.410	25
Orange	5/16"	1.000	0.490	0.620	4.650	0.900	0.620	2.990	1.380	0.130	0.312	25
Orange	5/16"	1.000	0.490	0.620	4.650	0.900	0.620	2.990	1.380	0.130	0.312	25
Orange	1/2"	1.750	0.490	0.620	4.650	0.900	0.620	2.990	1.380	0.130	0.510	25
Orange	1/2"	1.750	0.490	0.620	4.650	0.900	0.620	2.990	1.380	0.130	0.510	25
Purple	1/4"	0.625	0.550	0.690	3.540	1.000	0.380	1.810	1.420	0.130	0.252	25
Purple	1/4"	0.625	0.550	0.690	3.540	1.000	0.380	1.810	1.420	0.130	0.252	25
Purple	1/4"	0.750	0.550	0.690	3.540	1.000	0.380	1.810	1.420	0.130	0.252	25
Purple	1/4"	0.750	0.550	0.690	3.540	1.000	0.380	1.810	1.420	0.130	0.252	25
Purple	3/8"	1.000	0.550	0.690	3.540	1.000	0.380	1.810	1.420	0.130	0.410	25
Purple	3/8"	1.000	0.550	0.690	3.540	1.000	0.380	1.810	1.420	0.130	0.410	25
Purple	3/8"	1.750	0.550	0.690	3.540	1.000	0.380	1.810	1.420	0.130	0.410	25
Purple	3/8"	1.750	0.550	0.690	3.540	1.000	0.380	1.810	1.420	0.130	0.410	25
Purple	1/2"	1.750	0.550	0.690	4.720	1.000	0.620	2.990	1.420	0.130	0.510	25
Purple	1/2"	1.750	0.550	0.690	4.720	1.000	0.620	2.990	1.420	0.130	0.510	25
Yellow	1/2"	1.750	0.590	0.750	4.960	1.090	0.620	2.990	1.610	0.150	0.510	25
Yellow	3/8"	1.000	0.590	0.750	3.780	1.090	0.380	1.810	1.610	0.150	0.410	25
White	1/2"	1.750	0.660	0.810	5.310	1.190	0.620	2.990	1.970	0.150	0.510	12
Red	1/2"	1.750	0.700	0.870	5.390	1.280	0.620	2.990	1.970	0.170	0.510	12
Red	3/8"	1.000	0.700	0.870	4.210	1.280	0.380	1.810	1.970	0.170	0.410	12
Blue	1/2"	1.750	0.760	0.950	5.470	1.390	0.620	2.990	1.970	0.180	0.510	6
Brown	1/2"	1.750	0.840	1.060	5.750	1.540	0.620	2.990	2.240	0.220	0.510	6
Brown	3/8"	1.000	0.840	1.060	4.570	1.540	0.380	1.810	2.240	0.220	0.410	6
Green	1/2"	1.750	0.930	1.190	5.790	1.720	0.620	2.990	2.240	0.250	0.510	6
Green	3/8"	1.000	0.930	1.190	4.610	1.720	0.380	1.810	2.240	0.250	0.410	6
Black	1/2"	1.750	1.040	1.310	6.300	1.900	0.620	2.990	2.640	0.270	0.510	3
Black	3/8"	1.000	1.040	1.310	5.120	1.900	0.380	1.810	2.640	0.270	0.410	3
White	1/2"	1.750	1.150	1.500	7.125	2.160	0.630	3.060	3.160	0.340	0.510	3

