

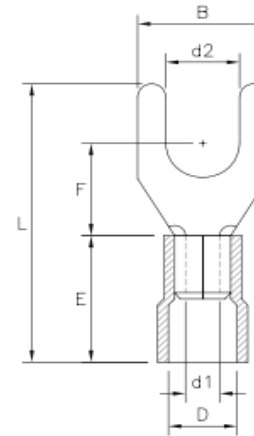
Nylon Insulated Spade Terminal

Drawn - SD

Approved - KM

Material - Copper / Nylon Insulation

Title - Nylon Insulated Spade Terminal



Part Number	Wire Range	Insulated Color	Electrical Rating Max	d1	d2	B	F	L	E	D
S22-4N	22-18 AWG	RED	105C / 600 Volts	0.167	0.140	0.234	0.700	0.862	0.445	0.236
S22-6N	22-18 AWG	RED	105C / 600 Volts	0.167	0.148	0.234	0.700	0.862	0.445	0.236
S22-8N	22-18 AWG	RED	105C / 600 Volts	0.167	0.171	0.298	0.700	0.860	0.565	0.236
S22-10N	22-18 AWG	RED	105C / 600 Volts	0.167	0.201	0.321	0.840	1.035	0.544	0.209
S16-6N	16-14 AWG	BLUE	105C / 600 Volts	0.090	0.145	0.251	0.248	0.866	0.433	0.177
S16-8N	16-14 AWG	BLUE	105C / 600 Volts	0.090	0.169	0.283	0.255	0.874	0.433	0.177
S16-10N	16-14 AWG	BLUE	105C / 600 Volts	0.090	0.208	0.334	0.287	0.905	0.433	0.177
S16-14N	16-14 AWG	BLUE	105C / 600 Volts	0.090	0.284	0.334	0.287	0.905	0.433	0.177
S12-6N	12-10 AWG	YELLOW	105C / 600 Volts	0.133	0.145	0.334	0.295	1.011	0.511	0.255
S12-8N	12-10 AWG	YELLOW	105C / 600 Volts	0.133	0.169	0.374	0.295	1.011	0.511	0.255
S12-10N	12-10 AWG	YELLOW	105C / 600 Volts	0.133	0.208	0.374	0.295	1.011	0.511	0.255
S12-14N	12-10 AWG	YELLOW	105C / 600 Volts	0.133	0.255	0.472	0.472	1.248	0.511	0.255
S8-10N	8 AWG	Red	105C / 600 Volts	0.176	0.209	0.472	0.660	0.939	0.327	0.280
S8-14N	8 AWG	Red	105C / 600 Volts	0.181	0.265	0.472	0.982	1.246	0.650	0.387