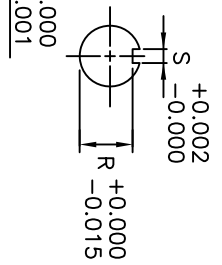
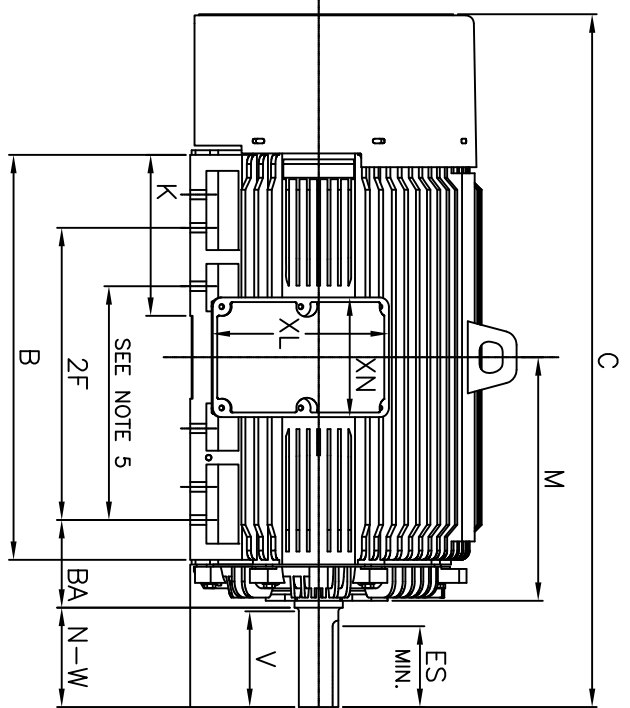


1/2"-13 UNC GND BOLT
SEE NOTE 7



- NOTES:
1. DIMENSION V REPRESENTS LENGTH OF STRAIGHT PART OF SHAFT
 2. MAIN CONDUIT BOX MAY BE ROTATED IN 90° INCREMENTS
 3. KEY DIMENSIONS EQUAL S x S x 6.91 (MOTOR SUPPLIED WITH KEY)
 4. MOTOR WEIGHT SHOWN IS MAXIMUM HORSEPOWER IN FRAME
 5. THIS DIMENSION EQUALS 2F FOR N447T MOUNTING
 6. STANDARD PRODUCT USE BI-DIRECTIONAL FAN. OPPOSITE ROTATION AVAILABLE ONLY BY CONNECTION CHANGE
 7. FRAME GROUND BOLT STANDARD ON 841 PRODUCT

| FRAME SIZE | MOTOR DIMENSIONS | | | | | | | | | | | | | CONDUIT BOX | | | | | | | | MAXIMUM WEIGHT |
|---------------|------------------|-------------|------|-----------------|------|------|----------|-------|-------|----------|-----------|------------|------------|-------------|------------|-----------|------|----------------|--|--|--|----------------|
| | A | B | C | D | G | J | K | M | O | P | T | A[NPT] | AB | AC | AE | AF | XL | XN | | | | |
| N447T/N449T | 22.0 | 34.7 | 59.3 | 11.00 | 1.4 | 4.6 | 13.8 | 20.9 | 25.0 | 27.0 | 3.0 | 4.00 | 24.0 | 19.7 | 11.00 | 9.2 | 15.2 | 10.2 | | | | |
| N447TS/N449TS | 22.0 | 34.7 | 55.6 | 11.00 | 1.4 | 4.6 | 13.8 | 20.9 | 25.0 | 27.0 | 3.0 | 4.00 | 24.0 | 19.7 | 11.00 | 9.2 | 15.2 | 10.2 | | | | |
| FRAME SIZE | MOUNTING | | | SHAFT EXTENSION | | | KEY SEAT | | | BEARINGS | | | | | | | | MAXIMUM WEIGHT | | | | |
| | E | 2F | H | BA | N-W | V | U | R | S | ES | LS ROLLER | LS BALL 6P | LS BALL 4P | OS 4~8P | LS BALL 2P | OS 2P | | | | | | |
| N447T/N449T | 9.00 | 20.00/25.00 | 0.82 | 7.50 | 8.50 | 8.25 | 3.375 | 2.880 | 0.875 | 6.88 | NU322C3 | 6322C3 | 6318C3 | 6318C3 | - | - | | | | | | |
| N447TS/N449TS | 9.00 | 20.00/25.00 | 0.82 | 7.50 | 4.75 | 4.50 | 2.375 | 2.021 | 0.625 | 3.00 | - | 6318C3 | 6318C3 | 6318C3 | 6313C3 | 6313C3 | | | | | | |
| | | | | | | | | | | | | | | | | 3800 lbs. | | | | | | |

CUSTOMER: _____ MOTOR MODEL NO.: _____ TAG NO's.: _____

P.O. NO.: _____ HP: _____ VOLTAGE: _____ RPM(SYN.): _____ HZ: _____
 FRAME SIZE: _____ PRODUCT TYPE: IEFEC EOP III 840
 COMMENTS: _____
 PER: _____ DATE: _____

TOSHIBA RESERVES THE RIGHT TO MAKE CHANGES OF TECHNICAL IMPROVEMENT AND THE DATA MAY CHANGE WITHOUT NOTICE PRELIMINARY
 DO NOT USE FOR CONSTRUCTION, INSTALLATION, OR APPLICATION PURPOSES UNLESS THE DRAWING IS MARKED AS CERTIFIED CERTIFIED

- STANDARD (NO AUX. BOXES)
- RTD AUX. BOX
- SPACE HEATER AUX. BOX
- BEARING RTD's

TOSHIBA
 TOSHIBA INTERNATIONAL CORPORATION
 TOTALLY-ENCLOSED FAN-COOLED
 HORIZONTAL FOOT-MOUNTED
 3 PHASE INDUCTION MOTOR
 F1 ASSEMBLY
XT SERIES
 VISIT OUR WEBSITE AT:
 www.toshiba.com/ind

TYPICAL MOTOR PERFORMANCE DATA

Model: B3501FLG30MHDL

| HP | kW | Pole | FL RPM | Frame | Voltage | Hz | Phase | FL Amps |
|-----------|-----|------------|--------|--------|----------------|-------------|----------|--------------|
| 350 | 261 | 2 | 3580 | N449TS | 288/575 | 60 | 3 | 608/304 |
| Enclosure | IP | Ins. Class | S.F. | Duty | NEMA Nom. Eff. | NEMA Design | kVA Code | Ambient (°C) |
| TEFC | 56 | F | 1.15 | CONT | 95.8 | B | G | 40 C |

| Load | HP | kW | Amperes | Efficiency (%) | Power Factor (%) |
|--------------|--------|-------|---------|----------------|------------------|
| Full Load | 350 | 261.0 | 304.0 | 95.9 | 90.2 |
| ¾ Load | 262.50 | 195.7 | 230.8 | 95.0 | 89.6 |
| ½ Load | 175.00 | 130.5 | 160.5 | 93.1 | 86.9 |
| ¼ Load | 87.50 | 65.2 | 95.5 | 87.6 | 78.3 |
| No Load | | | 56.0 | | 7.6 |
| Locked Rotor | | | 2040.00 | | 23.2 |

| Torque | | | | Rotor wk ² Inertia (lb-ft ²) |
|----------------------|-------------------------|--------------------|-----------------------|---|
| Full Load (lb-ft) | Locked Rotor (% FLT) | Pull Up (% FLT) | Break Down (% FLT) | |
| 514 | 180 | 125 | 270 | 129.14 |

| Safe Stall Time(s) | | Sound Pressure dB(A) @ 1M | Bearings* | | Approx. Motor Weight (lbs) |
|--------------------|-----|------------------------------|-----------|--------|-------------------------------|
| Cold | Hot | | DE | NDE | |
| 34 | 12 | - | 6313C3 | 6313C3 | |

*Bearings are the only recommended spare part(s).

Motor Options:
Product Family:EQPIII 840
Mounting:Footed,Shaft:TS Shaft

| | |
|-------------|--|
| Customer | |
| Customer PO | |
| Sales Order | |
| Project # | |

Tag:

All characteristics are average expected values.

TOSHIBA INTERNATIONAL CORPORATION · HOUSTON, TEXAS U.S.A.

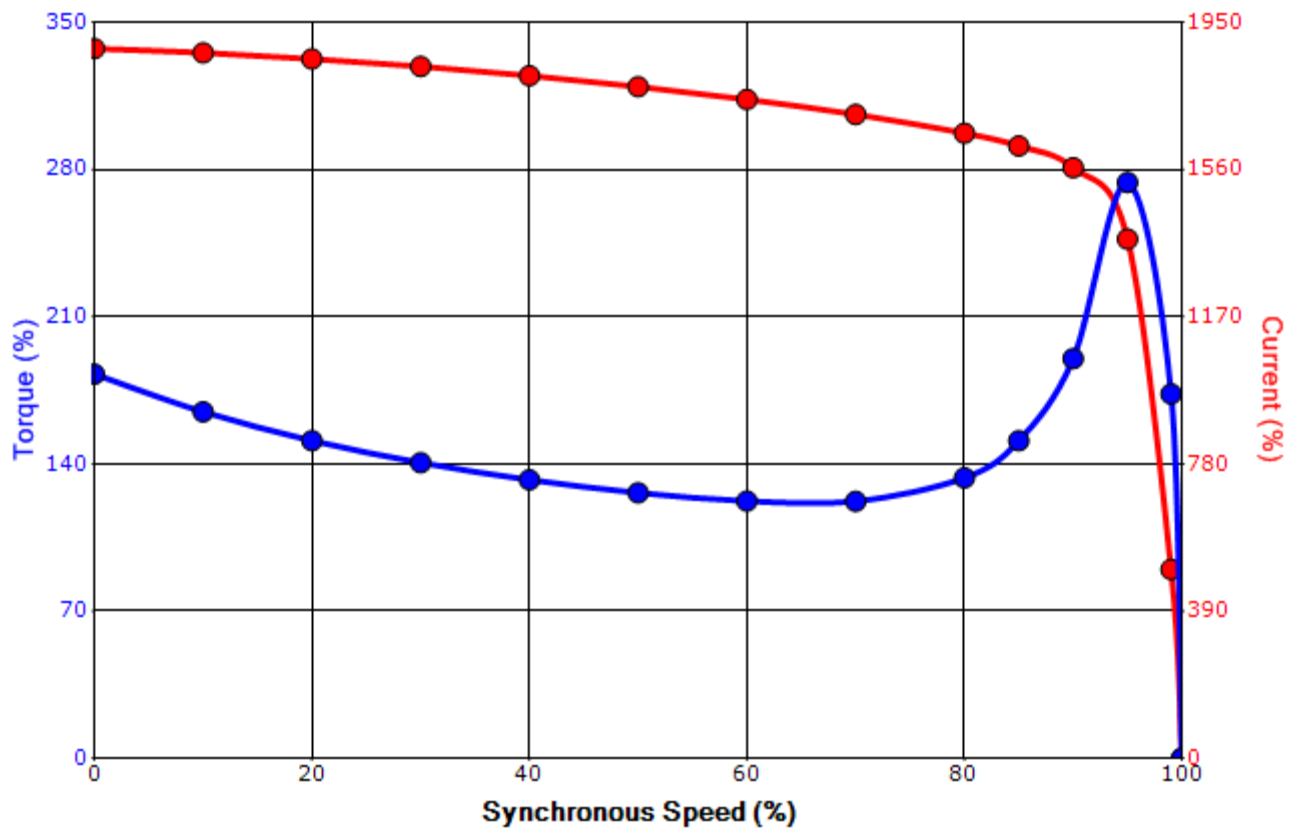
| | | | | | |
|-------------|-----------|------------------|-------------|-------------|---------------|
| Engineering | aacosta | Doc. Written By | D. Suarez | Doc.# / Rev | MPCF-1119 / 0 |
| Engr. Date | 4/24/2012 | Doc. Approved By | M. Campbell | Doc. Issued | 6/8/2011 |

SPEED TORQUE/CURRENT CURVE

Model: B3501FLG30MHDL

| | | | | | | | | |
|-------------------|---|-------------------|------------------|--------|----------------|-------------|----------|----------------|
| HP | kW | Pole | FL RPM | Frame | Voltage | Hz | Phase | FL Amps |
| 350 | 261 | 2 | 3580 | N449TS | 288/575 | 60 | 3 | 608/304 |
| Enclosure | IP | Ins. Class | S.F. | Duty | NEMA Nom. Eff. | NEMA Design | kVA Code | Ambient (°C) |
| TEFC | 56 | F | 1.15 | CONT | 95.8 | B | G | 40 C |
| Locked Rotor Amps | Rotor wk ² Inertia (lb-ft ²) | Torque | | | | | | Break Down (%) |
| | | Full Load (lb-ft) | Locked Rotor (%) | | Pull Up (%) | | | |
| 2040.00 | 129.14 | 514 | 180 | | 125 | | 270 | |

Design Values



| | | | |
|-------------|--|--|-----|
| Customer | | wk ² Load Inertia (lb-ft ²) | - |
| Customer PO | | Load Type | - |
| Sales Order | | Voltage (%) | 100 |
| Project # | | Accel. Time | - |

Tag:

All characteristics are average expected values.

TOSHIBA INTERNATIONAL CORPORATION · HOUSTON, TEXAS U.S.A.

| | | | | | |
|-------------|-----------|------------------|-------------|-------------|---------------|
| Engineering | aacosta | Doc. Written By | D. Suarez | Doc.# / Rev | MPCF-1121 / 0 |
| Engr. Date | 4/24/2012 | Doc. Approved By | M. Campbell | Doc. Issued | 6/8/2011 |

Motor Connection Diagrams
6 Leads

Across the Line Starting / Run - Delta:



Alternate Starting Connection - Wye:



Switch L1 and L2 to reverse rotation