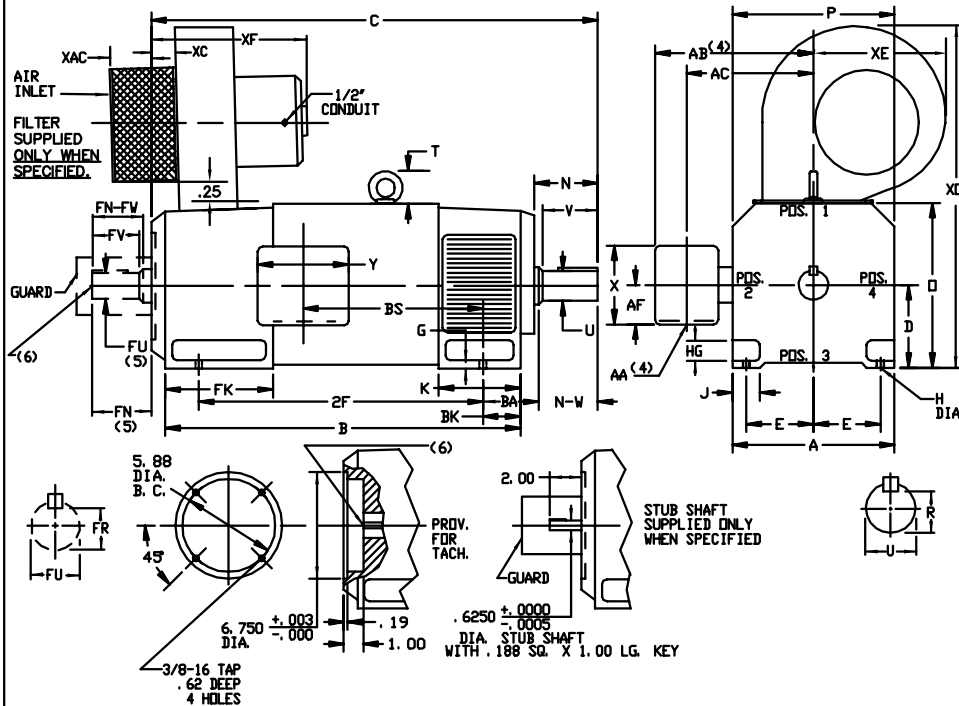


# INDUSTRIAL DIRECT CURRENT MOTORS AND GENERATORS - RPM III

ENCLOSURE: DRIP-PROOF FULLY-GUARDED,  
SPLASHPROOF  
MOUNTING: FOOT

COOLING: FORCE VENTILATED  
WITH INTEGRAL  
BLOWER AND MOTOR

ACCESSORIES: PROVISION FOR  
FRAMES MC2812ATZ THRU UC2815ATZ TACHOMETER MOUNTING  
ONLY WHEN SPECIFIED



DIMENSIONS ARE IN INCHES

FRAME	XAC	XC	XE	XF	XO
MC2812ATZ-UC2815ATZ	6.38	4.00	9.25	19.00	26.25

FRAME	METHOD OR DRIVE	FRAME													WT. LBS.					
		A	DK(1)	E	G	H	HG	J	D	P	T	BA	K	FK		BK				
MC2812ATZ-UC2815ATZ		13.78	7.00	5.50	.62	.56	1.88	2.75	14.00	13.94	2.80	4.75	6.75	9.19	3.50					
FRAME	METHOD OR DRIVE	DRIVE END SHAFT AND KEY										OPPOSITE DRIVE END SHAFT AND KEY(5)				WT. LBS.				
		C(7)	B	BS	2F	N	N-V	UK(2)	V	R(3)	SD	LGTH	FN	FN-FV	FK(2)		FV	FR(3)	SD	LGTH
MC2812ATZ	COUPLED	37.38	29.94	14.25	22.00	5.00	4.75	2.375	4.50	2.021	.625	3.50	4.50	4.25	2.125	4.00	1.845	.500	3.00	810
UMC2812ATZ	BELTED	37.88	29.94	14.25	22.00	5.50	5.25	2.625	5.00	2.275	.625	4.00	4.50	4.25	2.125	4.00	1.845	.500	3.00	815
LC2812ATZ	COUPLED	39.62	32.19	16.50	22.00	5.00	4.75	2.375	4.50	2.021	.625	3.50	4.50	4.25	2.125	4.00	1.845	.500	3.00	885
ULC2812ATZ	BELTED	40.12	32.19	16.50	22.00	5.50	5.25	2.625	5.00	2.275	.625	4.00	4.50	4.25	2.125	4.00	1.845	.500	3.00	890
C2813ATZ	COUPLED	41.25	33.81	18.12	25.00	5.00	4.75	2.375	4.50	2.021	.625	3.50	4.50	4.25	2.125	4.00	1.845	.500	3.00	940
UC2813ATZ	BELTED	41.75	33.81	18.12	25.00	5.50	5.25	2.625	5.00	2.275	.625	4.00	4.50	4.25	2.125	4.00	1.845	.500	3.00	945
C2815ATZ	COUPLED	46.75	39.31	23.62	32.00	5.00	4.75	2.375	4.50	2.021	.625	3.50	4.50	4.25	2.125	4.00	1.845	.500	3.00	1125
UC2815ATZ	BELTED	47.25	39.31	23.62	32.00	5.50	5.25	2.625	5.00	2.275	.625	4.00	4.50	4.25	2.125	4.00	1.845	.500	3.00	1130

- (1) "B" DIMENSION WILL NOT BE EXCEEDED. SHIMS UP TO .03 INCHES IN THICKNESS ARE USUALLY REQUIRED FOR COUPLED OR GEARED MACHINES.
- (2) "U" AND "FU" VARY-----, 000 - .01
- (3) "R" AND "FR" VARY-----, 000 - .015
- (4) TERMINAL BOX VARIES WITH H.P. FOR DIMENSIONS "AA", "AB", "AC", "AF", "X" AND "Y", REFER TO BOX D/S. (STD. 609959-1, X/P 609959-2, WILL 609959-3)
- (5) OPPOSITE DRIVE END SHAFT SUPPLIED ONLY WHEN SPECIFIED.
- (6) MOTOR SHAFT TAPPED FOR SCREW-IN STUB SHAFT.
- (7) WHEN THE MOTOR APPLICATION DOES NOT REQUIRE THE USE OF DPP, DRIVE END, ADD .25 TO "C" DIM. FOR BRACKET COVER.  
TERMINAL BOX CAN BE ROTATED FOR LEAD OUTLET AT TOP, SIDES OR BOTTOM  
TERMINAL BOX LOCATED ON OPPOSITE SIDE WHEN F-2, W-1, W-4, W-5, W-7,  
OR C-1 MOUNTING IS SPECIFIED. BOX LOCATED ON TOP WHEN SPECIFIED.  
BLOWER ASSEMBLY CAN BE LOCATED AT POSITIONS 1, 2, OR 4, EXCEPT  
BLOWER ASSEMBLY AND TERMINAL BOX CAN NOT BE LOCATED AT THE SAME POSITION.  
MOTOR WEIGHT MAY VARY 15% FOR NON-STANDARD RATINGS AND/OR ACCESSORIES.  
IF MOUNTING CLEARANCE DETAILS ARE REQUIRED, CONSULT FACTORY.

CUSTOMER IS RESPONSIBLE FOR DETERMINING THAT BALDOR'S PRODUCT WILL PERFORM SUITABLY IN THE INTENDED APPLICATION.

REV. DESC: LOADED TO BUS	VERSION: 00	TDR: 000000578087
REV. LTR: -	REVISED: 01:13:50 01/28/2011	BY: CONNAS
MTL: -		

## BALDOR

DIMENSION DRAWING, MC2812ATZ - UC2815ATZ, DPP, FOOT MTG

SH 1 of 1