

Hub City™ Parallel Shaft Drives

Model 230 – Single Reduction

Features

- Rugged cast iron housing designed for rigid gear and bearing support.
- Alloy shafting for greater strength.
- Heat treated alloy steel pinion and alloy cast iron gear for strength and long life.
- Needle bearings on high speed shaft. Bronze bushings on low speed shaft.
- Choice of three (3) gear ratios.
- Heavy-duty industrial seals to keep lubricant in and dirt out.
- Hub City lubricant recommended. (Refer to Section M)
- Manufactured to order - Consult factory for price and delivery.



SINGLE REDUCTION UNITS PROVIDE OPPOSITE DIRECTION OUTPUT ROTATION

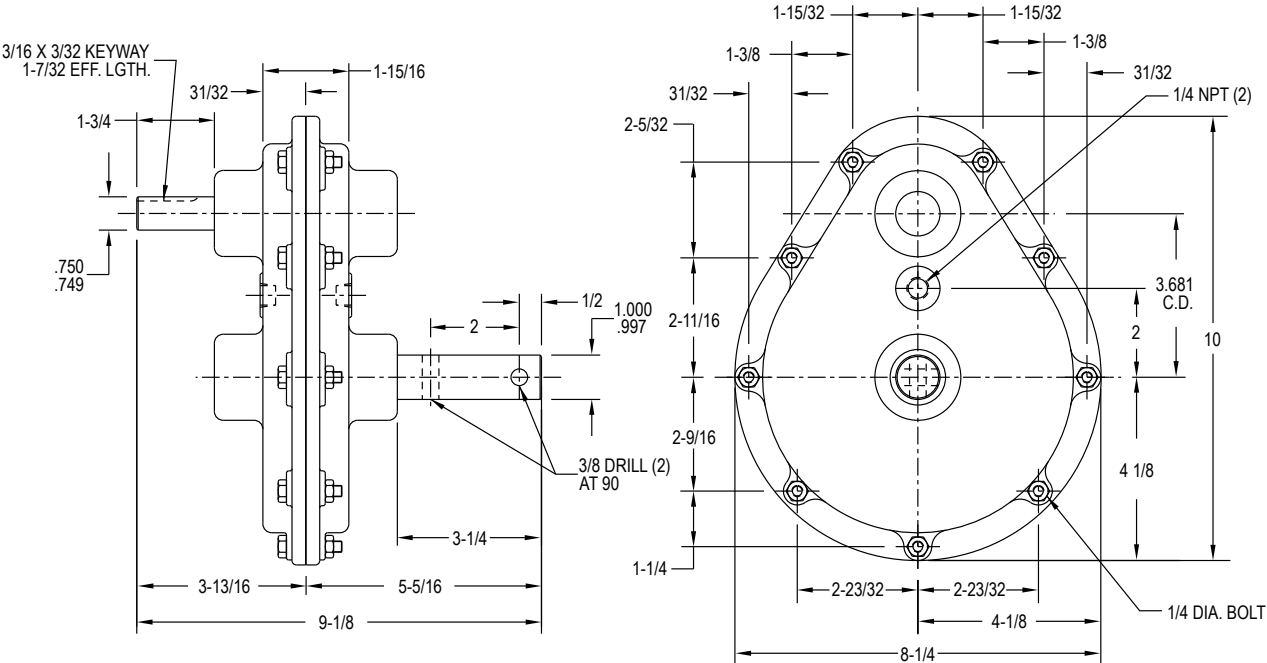
Rating Table

INPUT RPM		RATIOS		
		3.11:1*	4.21:1*	5:1*
1750	INPUT HORSEPOWER	6.8	3.9	2.5
	OUTPUT RPM	583	438	350
	OUTPUT TORQUE IN. LBS.	713	545	437
1150	INPUT HORSEPOWER	4.5	2.7	1.8
	OUTPUT RPM	383	288	230
	OUTPUT TORQUE IN. LBS.	718	574	478
850	INPUT HORSEPOWER	3.7	2.2	1.4
	OUTPUT RPM	283	213	170
	OUTPUT TORQUE IN. LBS.	798	633	503
690	INPUT HORSEPOWER	3.2	1.9	1.2
	OUTPUT RPM	230	173	138
	OUTPUT TORQUE IN. LBS.	851	673	532
100	INPUT HORSEPOWER	.5	.4	.2
	OUTPUT RPM	33	25	20
	OUTPUT TORQUE IN. LBS.	917	978	611

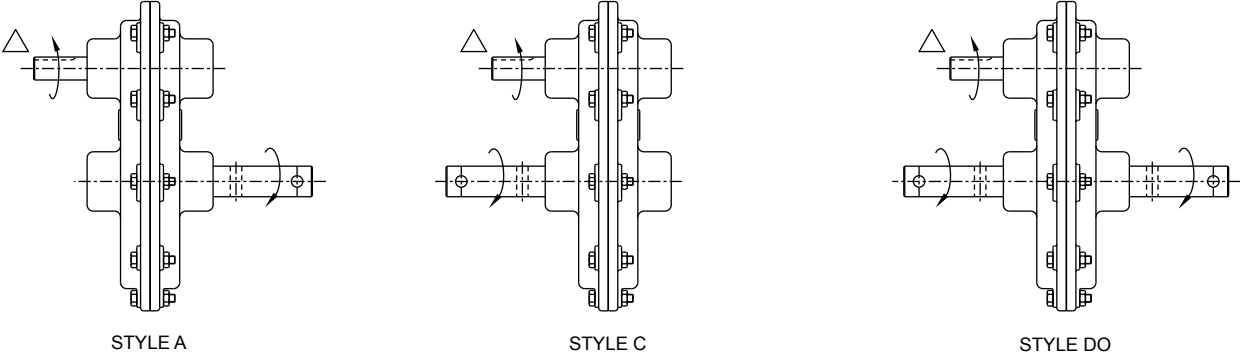
*MFG. TO ORDER — CONSULT FACTORY FOR PRICE AND DELIVERY.

Hub City™ Parallel Shaft Drives

Model 230 – Single Reduction



Standard Styles Available



△ INDICATES HIGH SPEED SHAFT. OTHER STYLES AVAILABLE.
 CONSULT FACTORY FOR VERTICAL SHAFT LUBRICATION RECOMMENDATIONS
 INPUT SHAFT CAN BE ROTATED IN EITHER DIRECTION

FOR LUBRICATION AND INSTALLATION INSTRUCTIONS - REFER TO SECTION M
 DRY SHIPPING WEIGHT 23 LBS.
 DIMENSIONS SHOWN ARE FOR REFERENCE ONLY.
 DOWNLOAD AVAILABLE CAD MODELS AT: WWW.HUBCITYINC.COM