

Hub City™ Parallel Shaft Drives

Model 8 – Double Reduction

Features

- Rugged Ductile iron housing designed for rigid gear and bearing support.
- Alloy shafting and sleeves for greater strength.
- Precision bearings on all shafts.
- Choice of five (5) standard gear ratios.
- Heat treated alloy steel gearing for strength and long wear life.
- Heavy-duty industrial seals to keep lubricant in and dirt out.
- Shaft mount design for direct mounting on the drive shaft of equipment to be driven.
- Hub City lubricant recommended. (Refer to Section M)
- Manufactured to order - Consult factory for price and delivery.



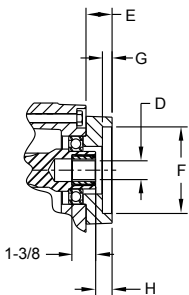
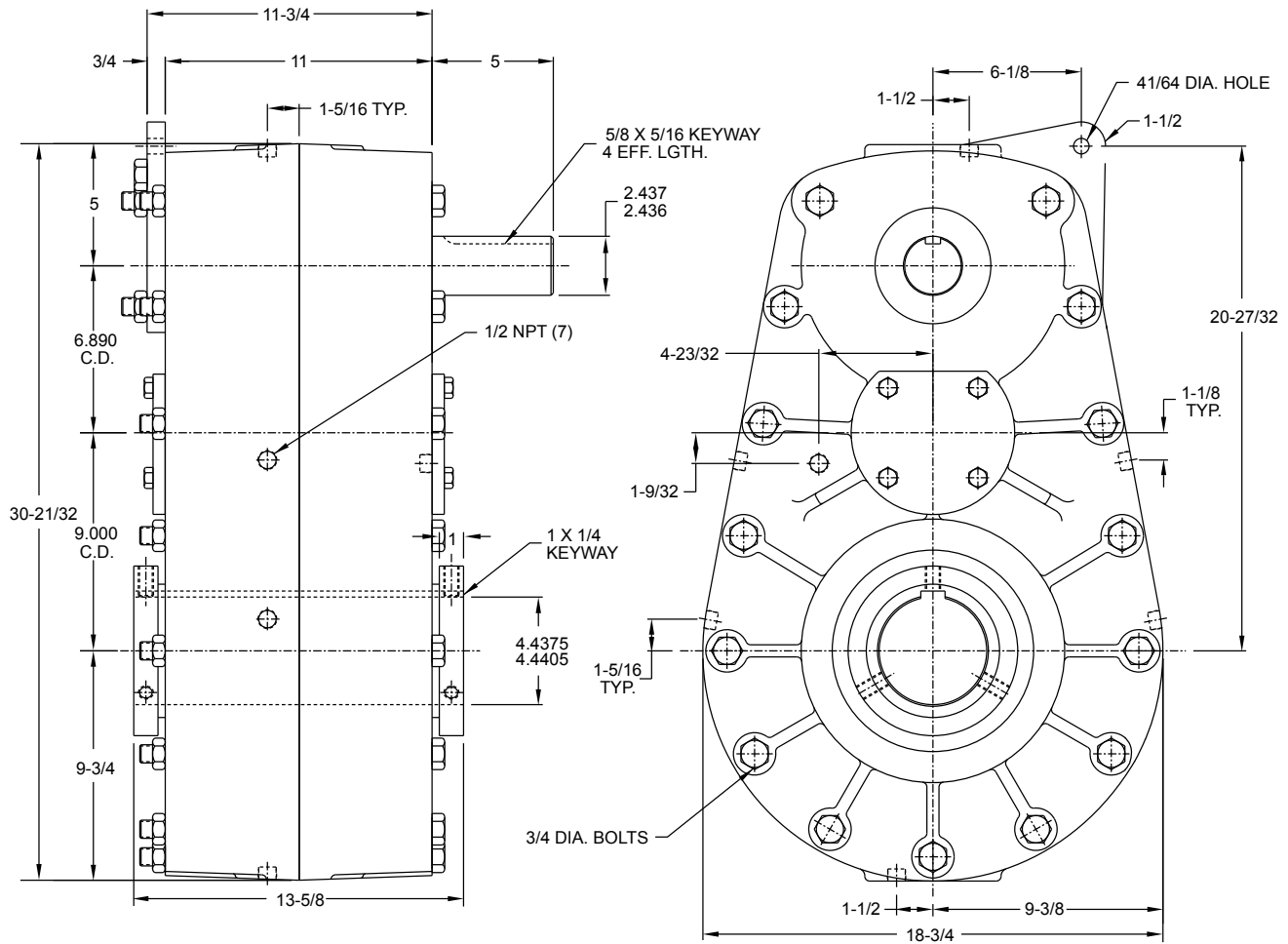
DOUBLE REDUCTION UNITS PROVIDE SAME DIRECTION OUTPUT ROTATION

Rating Table

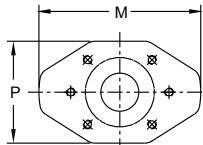
INPUT RPM		RATIOS				
		5.16:1	10.48:1	15.23:1	24.84:1	29.32:1
1750	INPUT HORSEPOWER	291.0	181.1	181.1	119.0	101.7
	OUTPUT RPM	339	167	115	70	59
	OUTPUT TORQUE IN. LBS.	53002	66871	97235	104607	107060
1150	INPUT HORSEPOWER	205.1	126.5	126.4	80.8	69.0
	OUTPUT RPM	223	110	76	46	39
	OUTPUT TORQUE IN. LBS.	56848	71094	103376	108114	110434
850	INPUT HORSEPOWER	158.7	97.3	96.4	61.0	52.0
	OUTPUT RPM	165	81	56	34	29
	OUTPUT TORQUE IN. LBS.	59496	73950	106583	110359	112585
690	INPUT HORSEPOWER	132.6	81.0	79.5	50.1	42.7
	OUTPUT RPM	134	66	45	28	23
	OUTPUT TORQUE IN. LBS.	61252	75822	108257	111775	113939
100	INPUT HORSEPOWER	23.24	13.77	12.67	7.84	6.64
	OUTPUT RPM	19.4	9.6	6.6	4.0	3.3
	OUTPUT TORQUE IN. LBS.	74057	88932	119006	120646	122361

Hub City™ Parallel Shaft Drives

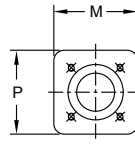
Model 8 – Double Reduction



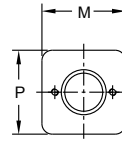
SEE CHART FOR
(QTY) J HOLES ON K B.C.
FOR EACH FLANGE SIZE



SAE C-2
SAE C-4



SAE B-4



SAE A-2
SAE A-2CL
SAE B-2

SHAFT MOUNTED UNITS REQUIRE TORQUE ARMS.
TORQUE ARM KITS ARE AVAILABLE See Page F-45.

ADDITIONAL RATIOS, OUTPUT BORES AND INPUT
BORES ARE AVAILABLE — CONSULT FACTORY.

FOR LUBRICATION AND INSTALLATION
INSTRUCTIONS - REFER TO SECTION M

DRY SHIPPING WEIGHT 725 LBS.

OPTIONAL LOW SPEED BORE SIZES AVAILABLE
3", 3-7/16, 3-15/16, 4", 4-3/16

INPUT BUSHING SIZES D			
1.000 DIA. - 1/4 X 1/8 KW	1.250 DIA. - 5/16 X 1/8 KW	13T - 16/32 D.P. SPLINE	21T - 16/32 D.P. SPLINE
1.125 DIA. - 1/4 X 1/8 KW	1" - 6B SPLINE	14T - 12/24 D.P. SPLINE	
1.250 DIA. - 1/4 X 1/8 KW	9T - 16/32 D.P. SPLINE	15T - 16/32 D.P. SPLINE	

FLANGE	E	COUNTERBORE F	G	H	(QTY) J HOLES	B.C. DIA. K	M	P
A-2	1	3.251 / 3.253	—	15/16	(2) 3/8 NC	4-3/16	8	8
A-2CL	1	3.251 / 3.253	—	15/16	(2) 1/2 NC	4-3/16	8	8
B-2	1	4.001 / 4.003	—	15/16	(2) 1/2 NC	5-3/4	8	8
B-4	1	4.001 / 4.003	—	15/16	(4) 1/2 NC	5	8	8
C-2	1	5.001 / 5.003	9/16	15/16	(2) 5/8 NC	7-1/8	10-5/8	8-1/2
C-4	1	5.001 / 5.003	9/16	15/16	(4) 1/2 NC	6-3/8	10-5/8	8-1/2

DIMENSIONS SHOWN ARE FOR REFERENCE ONLY.
DOWNLOAD AVAILABLE CAD MODELS AT: WWW.HUBCITYINC.COM