

Hub City™ Parallel Shaft Drives

Model 4 – Double Reduction

Features

- Rugged cast iron housing designed for rigid gear and bearing support.
- Alloy shafting and sleeves for greater strength.
- Ball bearings on high speed shaft. Tapered roller bearings on low speed shaft.
- Choice of seven (7) standard gear ratios.
- Heat treated alloy steel gearing for strength and long wear life.
- Heavy-duty industrial seals to keep lubricant in and dirt out.
- Shaft mount design for direct mounting on the drive shaft of equipment to be driven.
- Hub City lubricant recommended. (Refer to Section M)



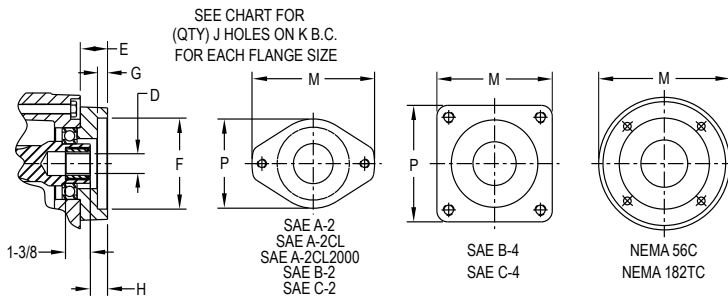
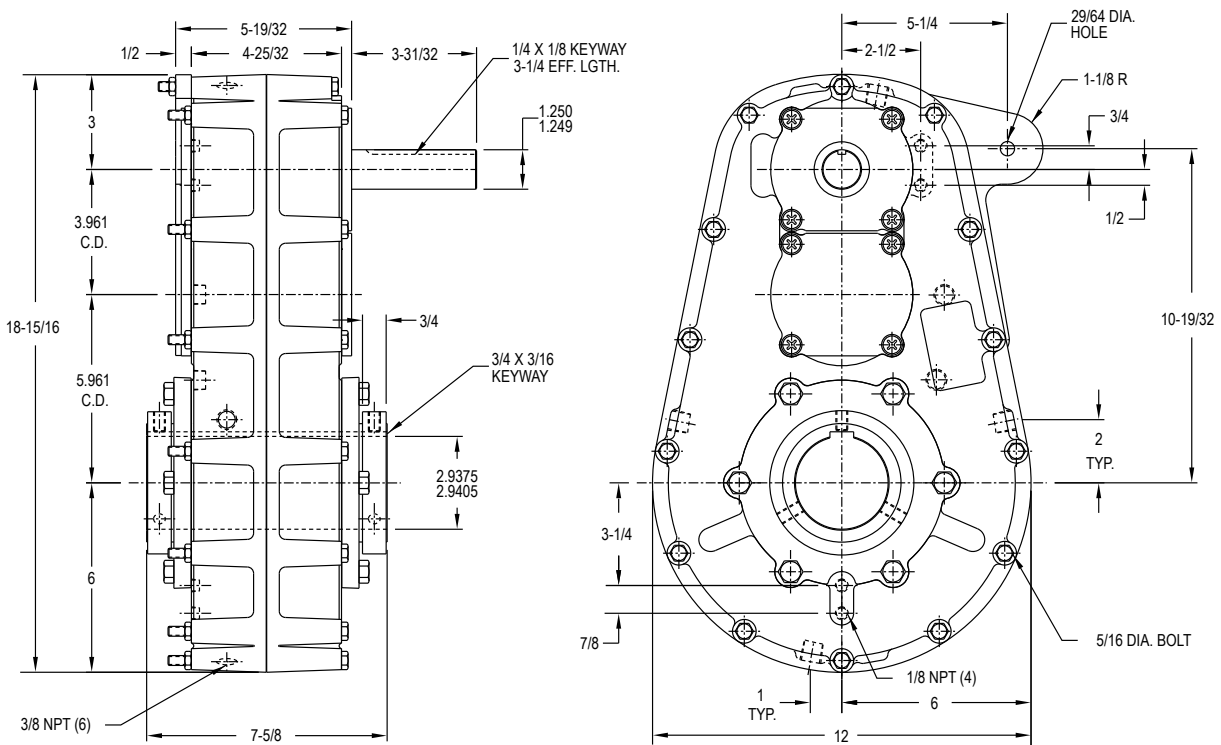
DOUBLE REDUCTION UNITS PROVIDE SAME DIRECTION OUTPUT ROTATION

Rating Table

INPUT RPM		RATIOS						
		5.02:1	7.99:1	12.42:1	15.87:1	18.96:1	23.65:1	30.02:1
1750	INPUT HORSEPOWER	49.9	40.1	27.7	22.7	20.0	17.1	13.8
	OUTPUT RPM	350	219	141	110	92	74	58
	OUTPUT TORQUE IN. LBS.	8536	11314	12136	12714	13395	14265	14644
1150	INPUT HORSEPOWER	34.0	28.2	20.0	16.7	14.3	11.9	9.6
	OUTPUT RPM	250	144	93	72	61	49	38
	OUTPUT TORQUE IN. LBS.	8851	12081	13361	14227	14537	15099	15433
850	INPUT HORSEPOWER	25.7	22.2	15.9	12.9	11.0	9.0	7.1
	OUTPUT RPM	170	106	68	54	45	36	28
	OUTPUT TORQUE IN. LBS.	9052	12878	14329	14847	15185	15478	15584
690	INPUT HORSEPOWER	21.1	19.1	13.2	10.8	9.1	7.4	5.8
	OUTPUT RPM	138	86	56	43	36	29	23
	OUTPUT TORQUE IN. LBS.	9155	13646	14713	15272	15463	15584	15660
100	INPUT HORSEPOWER	3.33	3.23	2.03	1.63	1.37	1.1	.86
	OUTPUT RPM	20.0	12.5	8.0	6.3	5.3	4.2	3.3
	OUTPUT TORQUE IN. LBS.	10535	15940	16020	16020	16020	16020	16020

Hub City™ Parallel Shaft Drives

Model 4 – Double Reduction



SHAFT MOUNTED UNITS REQUIRE TORQUE ARMS. TORQUE ARM KITS ARE AVAILABLE SEE PAGE F-45.

ADDITIONAL RATIOS, OUTPUT BORES AND INPUT BORES ARE AVAILABLE — CONSULT FACTORY.

FOR LUBRICATION AND INSTALLATION INSTRUCTIONS - REFER TO SECTION M

DRY SHIPPING WEIGHT 130 LBS.

OPTIONAL LOW SPEED BORE SIZES AVAILABLE
1-15/16, 2", 2-3/16, 2-7/16, 2-1/2, 3"

INPUT BUSHING SIZES			
D			
.625 DIA. - 3/16 X 3/32 KW	1.125 DIA. - 1/4 X 1/8 KW	1" - 6B SPLINE	14T - 12/24 D.P. SPLINE
.875 DIA. - 3/16 X 3/32 KW	1.250 DIA. - 1/4 X 1/8 KW	9T - 16/32 D.P. SPLINE	15T - 16/32 D.P. SPLINE
1.000 DIA. - 1/4 X 1/8 KW	1.250 DIA. - 5/16 X 1/8 KW	13T - 16/32 D.P. SPLINE	21T - 16/32 D.P. SPLINE

FLANGE	E	COUNTERBORE F	G	H	(QTY) J HOLES	B.C. DIA. K	M	P
A-2	1-1/4	3.251 / 3.253	5/16	51/64	(2) 3/8 NC	4-3/16	6-7/8	5-1/4
A-2CL	1-1/4	3.251 / 3.253	3/16	51/64	(2) 1/2 NC	4-3/16	6-7/8	5-1/4
A-2CL2000	1-1/4	3.251 / 3.253	5/16	51/64	(2) 1/2 NC	4-3/16	6-7/8	5-1/4
B-2	1-1/4	4.001 / 4.003	7/16	51/64	(2) 1/2 NC	5-3/4	6-7/8	5-1/4
B-4	1-1/4	4.001 / 4.003	7/16	51/64	(4) 1/2 NC	5	5-1/8	5-1/8
C-2	1-1/4	5.001 / 5.003	9/16	51/64	(2) 5/8 NC	7-1/8	8-1/2	6-1/8
C-4	1-1/4	5.001 / 5.003	9/16	51/64	(4) 1/2 NC	6-3/8	6-1/8	6-1/8
56C	2	4.502 / 4.504	5/16	1-35/64	(4) 13/32 DIA.	5-7/8	6-9/16	—
182TC	2-9/16	8.501 / 8.504	5/16	2-7/64	(4) 17/32 DIA.	7-1/4	9-1/8	—

DIMENSIONS SHOWN ARE FOR REFERENCE ONLY.
 DOWNLOAD AVAILABLE CAD MODELS AT: WWW.HUBCITYINC.COM