

Hub City™ Parallel Shaft Drives

Model 2 – Double Reduction

Features

- Rugged cast iron housing designed for rigid gear and bearing support.
- Alloy shafting and sleeves for greater strength.
- Ball bearings on all shafts.
- Choice of eight (8) standard gear ratios.
- Heat treated alloy steel gearing for strength and long wear life.
- Heavy-duty industrial seals to keep lubricant in and dirt out.
- Shaft mount design for direct mounting on the drive shaft of equipment to be driven.
- Hub City lubricant recommended. (Refer to Section M)



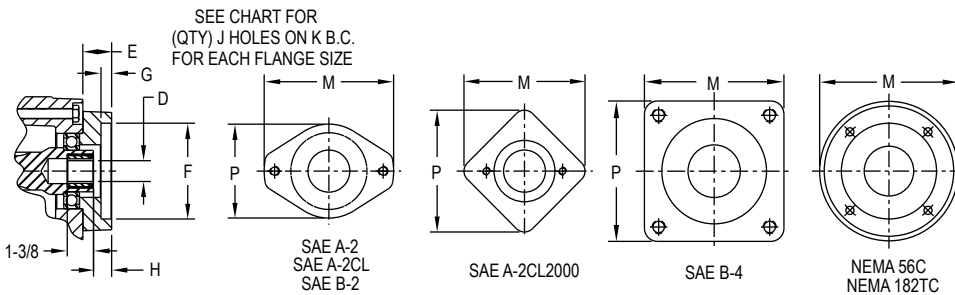
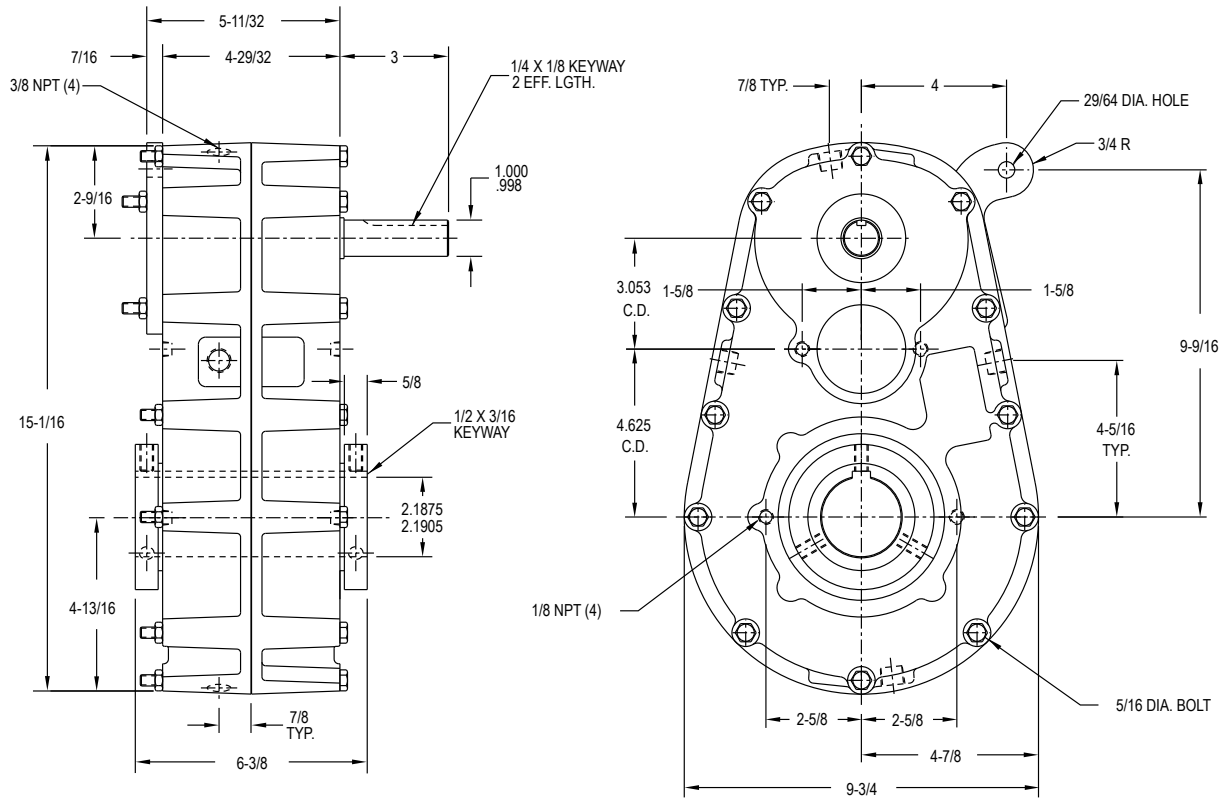
DOUBLE REDUCTION UNITS PROVIDE SAME DIRECTION OUTPUT ROTATION

Rating Table

INPUT RPM		RATIOS							
		5.00:1	10.00:1	15.00:1	20.00:1	25.00:1	51.08:1	59.08:1	72.00:1
1750	INPUT HORSEPOWER	21.9	18.5	8.8	7.2	5.8	3.2	2.8	2.3
	OUTPUT RPM	350	175	117	88	70	34	30	24
	OUTPUT TORQUE IN. LBS.	3871	4395	4651	5093	5076	5803	5825	5859
1150	INPUT HORSEPOWER	15.7	8.7	6.5	5.1	4.1	2.1	1.9	1.5
	OUTPUT RPM	230	115	77	58	46	23	19	16
	OUTPUT TORQUE IN. LBS.	4208	4687	5259	5499	5484	5865	5893	5928
850	INPUT HORSEPOWER	12.1	7.1	5.0	3.9	3.1	1.6	1.4	1.1
	OUTPUT RPM	170	85	57	43	34	17	14	12
	OUTPUT TORQUE IN. LBS.	4412	5128	5500	5736	5720	5917	5952	5976
690	INPUT HORSEPOWER	10.2	6.0	4.3	3.2	2.6	1.3	1.1	.9
	OUTPUT RPM	138	69	46	35	28	14	12	10
	OUTPUT TORQUE IN. LBS.	4559	5366	5761	5802	5797	5952	5988	6000
100	INPUT HORSEPOWER	1.90	.97	.65	.49	.39	.19	.16	.13
	OUTPUT RPM	20.0	10.0	6.7	5.0	4.0	2.0	1.7	1.4
	OUTPUT TORQUE IN. LBS.	5882	6000	6000	6000	6000	6000	6000	6000

Hub City™ Parallel Shaft Drives

Model 2 – Double Reduction



FOR LUBRICATION AND INSTALLATION INSTRUCTIONS - REFER TO SECTION M
SHAFT MOUNTED UNITS REQUIRE TORQUE ARMS. TORQUE ARM KITS ARE AVAILABLE SEE PAGE F-45.

ADDITIONAL RATIOS, OUTPUT BORES AND INPUT BORES ARE AVAILABLE — CONSULT FACTORY.

DRY SHIPPING WEIGHT 80 LBS.

OPTIONAL LOW SPEED BORE SIZES AVAILABLE
1", 1-1/4, 1-1/2, 1-3/4, 1-15/16, 2"

INPUT BUSHING SIZES D			
.625 DIA. - 3/16 X 3/32 KW	1.125 DIA. - 1/4 X 1/8 KW	1" - 6B SPLINE	14T - 12/24 D.P. SPLINE
.875 DIA. - 3/16 X 3/32 KW	1.250 DIA. - 1/4 X 1/8 KW	9T - 16/32 D.P. SPLINE	15T - 16/32 D.P. SPLINE
1.000 DIA. - 1/4 X 1/8 KW	1.250 DIA. - 5/16 X 1/8 KW	13T - 16/32 D.P. SPLINE	21T - 16/32 D.P. SPLINE

FLANGE	E	COUNTERBORE F	G	H	(QTY) J HOLES	B.C. DIA. K	M	P
A-2	1-7/16	3.251 / 3.253	5/16	7/16	(2) 3/8 NC	4-3/16	5-1/8	4-1/16
A-2CL	1-7/16	3.251 / 3.253	3/16	7/16	(2) 1/2 NC	4-3/16	5-1/8	4-1/16
A-2CL2000	1-13/16	3.251 / 3.253	13/32	51/64	(2) 1/2 NC	4-3/16	5-1/2	5-1/2
B-2	1-7/16	4.001 / 4.003	7/16	7/16	(2) 1/2 NC	5-3/4	6-7/8	5-1/4
B-4	1-7/16	4.001 / 4.003	7/16	7/16	(4) 1/2 NC	5	5-1/8	5-1/8
56C	1-5/8	4.502 / 4.504	5/16	5/8	(4) 13/32 DIA.	5-7/8	6-9/16	-
182TC	2-7/16	8.502 / 8.505	5/16	1-7/16	(4) 17/32 DIA.	7-1/4	9-1/8	-

DIMENSIONS SHOWN ARE FOR REFERENCE ONLY.
DOWNLOAD AVAILABLE CAD MODELS AT: WWW.HUBCITYINC.COM