

Hub City™ Parallel Shaft Drives

Model 6 – Double Reduction

Features

- Rugged cast iron housing designed for rigid gear and bearing support.
- Alloy shafting and sleeves for greater strength.
- Tapered roller bearings on all shafts.
- Choice of seven (7) standard gear ratios.
- Heat treated alloy steel gearing for strength and long wear life.
- Heavy-duty industrial seals to keep lubricant in and dirt out.
- Shaft mount design for direct mounting on the drive shaft of equipment to be driven.
- Hub City lubricant recommended. (Refer to Section M)



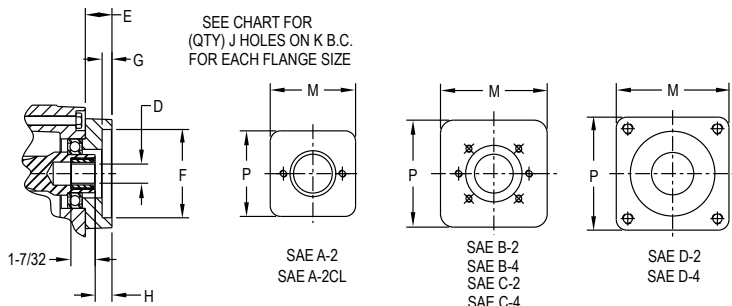
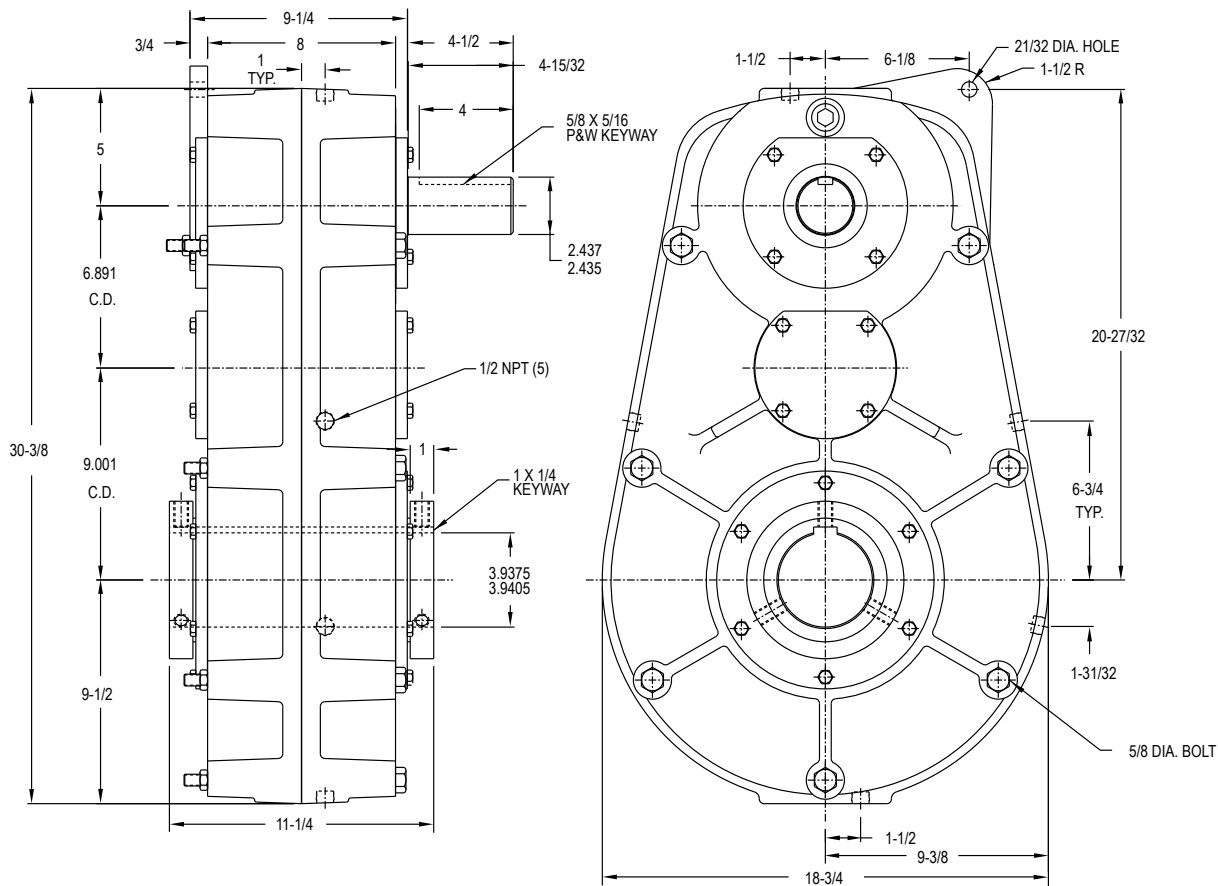
DOUBLE REDUCTION UNITS PROVIDE SAME DIRECTION OUTPUT ROTATION

Rating Table

INPUT RPM		RATIOS						
		5.16:1	10.48:1	15.23:1	19.99:1	24.84:1	29.32:1	50.69:1
1750	INPUT HORSEPOWER	136.9	76.5	55.8	46.2	37.1	33.7	20.7
	OUTPUT RPM	339	167	115	88	70	60	35
	OUTPUT TORQUE IN. LBS.	24935	28297	30000	32597	32487	34909	37101
1150	INPUT HORSEPOWER	97.9	54.1	41.3	32.8	26.3	23.5	13.8
	OUTPUT RPM	223	110	76	58	46	39	23
	OUTPUT TORQUE IN. LBS.	27119	30476	33745	35197	35700	36958	37536
850	INPUT HORSEPOWER	75.7	43.7	31.9	25.3	20.3	17.5	10.3
	OUTPUT RPM	165	81	56	43	34	29	17
	OUTPUT TORQUE IN. LBS.	28381	33275	35294	36711	36606	37317	37870
690	INPUT HORSEPOWER	63.3	36.8	26.7	20.8	16.7	14.3	8.4
	OUTPUT RPM	134	66	45	35	28	24	14
	OUTPUT TORQUE IN. LBS.	29246	34532	36398	37137	37101	37500	38095
100	INPUT HORSEPOWER	11.8	5.93	4.08	3.11	2.50	2.12	1.23
	OUTPUT RPM	19.4	9.5	6.6	5.0	4.0	3.4	2.0
	OUTPUT TORQUE IN. LBS.	37721	38400	38400	38400	38400	38400	38400

Hub City™ Parallel Shaft Drives

Model 6 – Double Reduction



SAE A-2
SAE A-2CL

SAE B-2
SAE B-4
SAE C-2
SAE C-4

SAE D-2
SAE D-4

SHAFT MOUNTED UNITS REQUIRE TORQUE ARMS. TORQUE ARM KITS ARE AVAILABLE See Page F-45.

ADDITIONAL RATIOS, OUTPUT BORES AND INPUT BORES ARE AVAILABLE — CONSULT FACTORY.

FOR LUBRICATION AND INSTALLATION INSTRUCTIONS - REFER TO SECTION M

DRY SHIPPING WEIGHT 480 LBS.

OPTIONAL LOW SPEED BORE SIZES AVAILABLE
4"

INPUT BUSHING SIZES		
D		
1.000 DIA. - 1/4 X 1/8 KW	13T - 16/32 D.P. SPLINE	15T - 16/32 D.P. SPLINE
9T - 16/32 D.P. SPLINE	14T - 12/24 D.P. SPLINE	21T - 16/32 D.P. SPLINE

FLANGE	E	COUNTERBORE F	G	H	(QTY) J HOLES	B.C. DIA. K	M	P
A-2	7/8	3.251 / 3.253	--	5/8	(2) 3/8 NC	4-3/16	8-3/8	8-3/8
A-2CL	7/8	3.251 / 3.253	--	5/8	(2) 1/2 NC	4-3/16	8-3/8	8-3/8
B-2	7/8	4.001 / 4.003	--	5/8	(2) 1/2 NC	5-3/4	8-3/8	8-3/8
B-4	7/8	4.001 / 4.003	--	5/8	(4) 1/2 NC	5	8-3/8	8-3/8
C-2	7/8	5.001 / 5.003	9/16	5/8	(2) 5/8 NC	7-1/8	8-3/8	8-3/8
C-4	7/8	5.001 / 5.003	9/16	5/8	(4) 1/2 NC	6-3/8	8-3/8	8-3/8
D2-4	7/8	6.001 / 6.003	9/16	5/8	(4) 25/32 DIA.	9	8-3/8	8-3/8

DIMENSIONS SHOWN ARE FOR REFERENCE ONLY.
DOWNLOAD AVAILABLE CAD MODELS AT: WWW.HUBCITYINC.COM