

Hub City™ Parallel Shaft Drives

Model 5 – Double Reduction

Features

- Rugged cast iron housing designed for rigid gear and bearing support.
- Alloy shafting and sleeves for greater strength.
- Ball bearings on all shafts.
- Choice of seven (7) standard gear ratios.
- Heat treated alloy steel gearing for strength and long wear life.
- Heavy-duty industrial seals to keep lubricant in and dirt out.
- Shaft mount design for direct mounting on the drive shaft of equipment to be driven.
- Hub City lubricant recommended. (Refer to Section M)



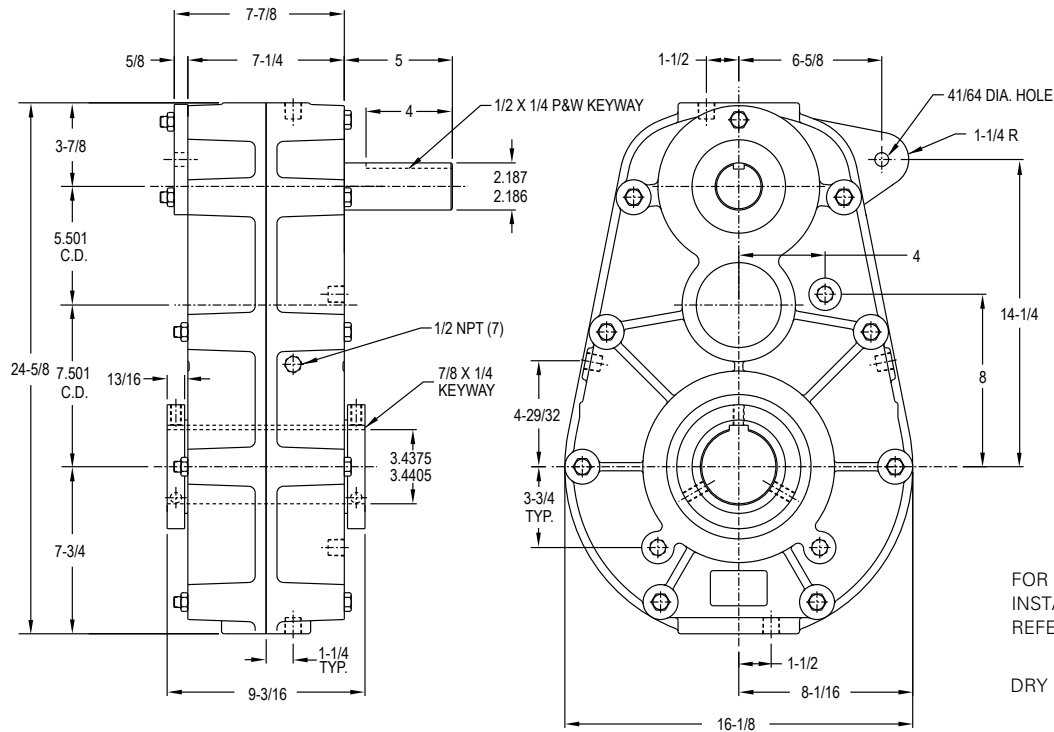
DOUBLE REDUCTION UNITS PROVIDE SAME DIRECTION OUTPUT ROTATION

Rating Table

INPUT RPM		RATIOS						
		5.04:1	10.36:1	15.22:1	19.99:1	25.81:1	29.89:1	49.62:1
1750	INPUT HORSEPOWER	106.6	59.2	42.8	35.4	27.3	25.4	16.2
	OUTPUT RPM	347	169	115	88	68	59	35
	OUTPUT TORQUE IN. LBS.	18968	21649	22969	24957	24873	26800	28406
1150	INPUT HORSEPOWER	76.2	41.9	31.5	25.1	19.4	17.6	10.8
	OUTPUT RPM	228	111	76	58	45	38	23
	OUTPUT TORQUE IN. LBS.	20617	23333	25767	26947	26874	28334	28739
850	INPUT HORSEPOWER	59.0	33.7	24.4	19.4	14.9	13.2	8.0
	OUTPUT RPM	169	82	56	43	33	28	17
	OUTPUT TORQUE IN. LBS.	21618	25388	27022	28107	28027	28599	28994
690	INPUT HORSEPOWER	49.4	28.5	20.5	15.9	12.3	10.7	6.6
	OUTPUT RPM	137	67	45	35	27	23	14
	OUTPUT TORQUE IN. LBS.	22307	26438	27867	28433	28506	28739	29167
100	INPUT HORSEPOWER	9.26	4.59	3.13	2.38	1.84	1.59	.96
	OUTPUT RPM	19.8	9.7	6.6	5.0	3.9	3.3	2.0
	OUTPUT TORQUE IN. LBS.	28824	29400	29400	29400	29400	29400	29400

Hub City™ Parallel Shaft Drives

Model 5 – Double Reduction

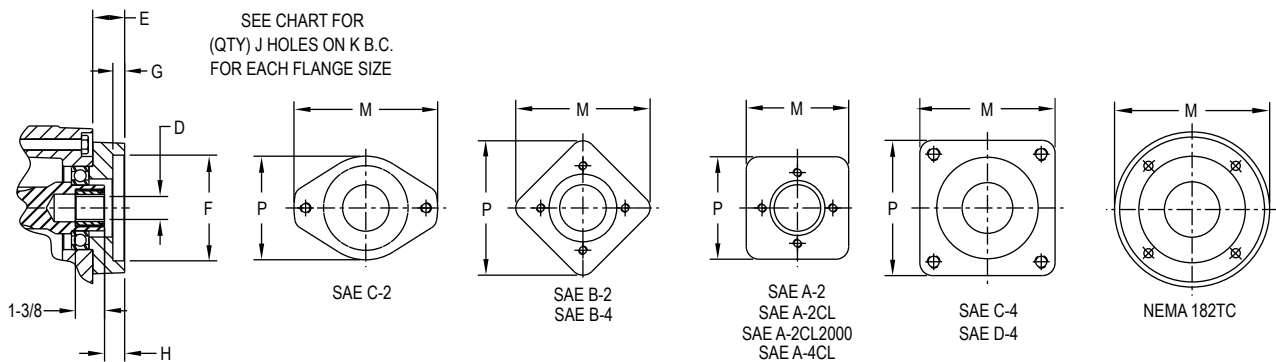


SHAFT MOUNTED UNITS REQUIRE TORQUE ARMS. TORQUE ARM KITS ARE AVAILABLE See Page F-45.

ADDITIONAL RATIOS, OUTPUT BORES AND INPUT BORES ARE AVAILABLE — CONSULT FACTORY.

FOR LUBRICATION AND INSTALLATION INSTRUCTIONS - REFER TO SECTION M

DRY SHIPPING WEIGHT 360 LBS.



OPTIONAL LOW SPEED BORE SIZES AVAILABLE
2-3/16, 2-1/4, 2-7/16, 2-1/2, 2-13/16, 2-3/4, 2-15/16, 3", 3-1/4, 3-1/2

INPUT BUSHING SIZES			
D			
1.000 DIA. - 1/4 X 1/8 KW	1.250 DIA. - 5/16 X 1/8 KW	13T - 16/32 D.P. SPLINE	21T - 16/32 D.P. SPLINE
1.125 DIA. - 1/4 X 1/8 KW	1" - 6B SPLINE	14T - 12/24 D.P. SPLINE	
1.250 DIA. - 1/4 X 1/8 KW	9T - 16/32 D.P. SPLINE	15T - 16/32 D.P. SPLINE	

FLANGE	E	COUNTERBORE F	G	H	(QTY) J HOLES	B.C. DIA. K	M	P
A-2	1-3/8	3.251 / 3.253	5/16	53/64	(2) 3/8 NC	4-3/16	6-1/16	6-1/16
A-2CL	1-3/8	3.251 / 3.253	3/16	53/64	(2) 1/2 NC	4-3/16	6-1/16	6-1/16
A-2CL2000	1-3/8	3.251 / 3.253	5/16	53/64	(2) 1/2 NC	4-3/16	6-1/16	6-1/16
A-4CL	1-3/8	3.251 / 3.253	3/16	53/64	(4) 1/2 NC	4-3/16	6-1/16	6-1/16
B-2	1-3/8	4.001 / 4.003	7/16	53/64	(2) 1/2 NC	5-3/4	6-1/16	6-1/16
B-4	1-3/8	4.001 / 4.003	7/16	53/64	(4) 1/2 NC	5	6-1/16	6-1/16
C-2	1-1/2	5.001 / 5.003	9/16	31/32	(2) 5/8 NC	7-1/8	8-1/2	6-1/8
C-4	1-1/2	5.001 / 5.003	9/16	31/32	(4) 1/2 NC	6-3/8	6-1/16	6-1/16
D-4	1-1/2	6.001 / 6.003	9/16	31/32	(4) 3/4 NC	9	8	8
182TC	2-7/16	8.501 / 8.504	5/16	1-57/64	(4) 17/32 DIA.	7-1/4	9-1/8	—

DIMENSIONS SHOWN ARE FOR REFERENCE ONLY.
 DOWNLOAD AVAILABLE CAD MODELS AT: WWW.HUBCITYINC.COM