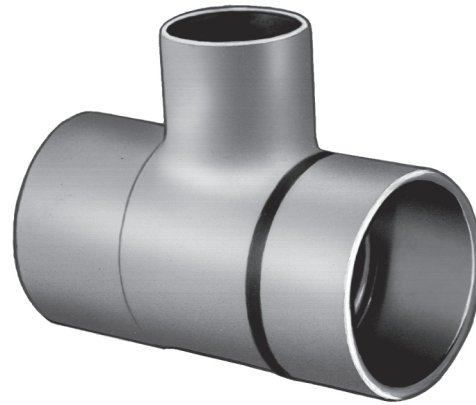


# B & G Copper Red Ring® Monoflo® Fittings



**INSTALLER:** PLEASE LEAVE THIS MANUAL FOR THE OWNER'S USE.



## SAFETY INSTRUCTION

This safety alert symbol will be used in this manual to draw attention to safety related instructions. When used, the safety alert symbol means **ATTENTION! BECOME ALERT! YOUR SAFETY IS INVOLVED! FAILURE TO FOLLOW THE INSTRUCTIONS MAY RESULT IN A SAFETY HAZARD!**

## DESCRIPTION

B&G Monoflo Fittings make possible the use of a single pipe to act as both a supply and return main. These Fittings connect the risers to the main and assure proper diversion of water to each terminal unit, whether radiator, convactor, baseboard or fan-coil. They can be installed on either the supply or return riser, or both, depending on the pressure drop through the side branch circuit and terminal unit.

## OPERATIONAL LIMITS

(Solder Type Limits per ASTM Std. B16.22-1989)

**CHART A**

TYPE OF SOLDER	MAXIMUM LIMITATIONS	
	PRESSURE PSI	TEMPERATURE °F
95-5	300	175
TIN-	250	200
ANTIMONY	175	250

## SPECIFICATIONS

Part No.	Size Inches	Dimensions-Inches (mm)*		Cv Ratings**		Approx. Shpg. Wt. lbs. (Kg)
		A	B	1 FTG	2 FTG	
108119	3/4 x 1/2***	2-7/32 (56)	1 (25)	4.2	—	1/4 (0.1)
108120	1 x 1/2	2-9/16 (65)	1-5/32 (30)	14.5	8.7	1/2 (0.2)
108121	1 x 3/4	2-3/4 (70)	1-3/8 (35)			
108122	1-1/4 x 1/2	2-3/4 (70)	1-7/32 (31)	24.0	15.5	
108123	1-1/4 x 3/4	2-27/32 (72)	1-3/8 (35)			
108124	1-1/2 x 3/4	3-3/32 (78)	1-11/16 (42)	39.0	25.0	1-1/4 (0.6)
108125	1-1/2 x 1	3-3/8 (86)	1-11/16 (42)			
108126	2 x 3/4	3-1/2 (89)	1-27/32 (47)	80.0	55.0	1-3/4 (0.8)
108127	2 x 1	3-13/16 (97)	2-1/32 (52)			

\* Do not use for construction. Dimensions are approximate and subject to change. Contact factory for certified dimensions.

\*\* With Side Branch plugged.

\*\*\* Return only.

## INSTALLATION INSTRUCTIONS

**WARNING:** Potential solder joint failure. You must comply with the limits of temperature, pressure and solder type listed in Chart A. Failure to follow these instructions could result in serious personal injury or death and property damage.

1. Use a torch with a sharp pointed flame.
2. Clean tube ends and Monoflo connections thoroughly.
3. Use 95-5 (Tin-Antimony) solder and a good grade of flux.
4. Always install the Monoflo Fittings with the red ring between the risers. A Monoflo fitting can be installed as either a supply or return Fitting. The Monoflo Fittings are marked with both supply and return flow directional arrows.
5. The minimum distance between upfeed risers is 6". The minimum distance between downfeed risers is the width of the terminal unit.

## OPERATING INSTRUCTIONS

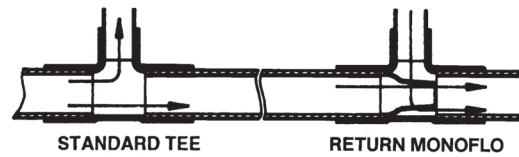
Operation of the Monoflo Fitting is automatic if properly installed. Adjustments are not an available option.

## SERVICE INSTRUCTIONS

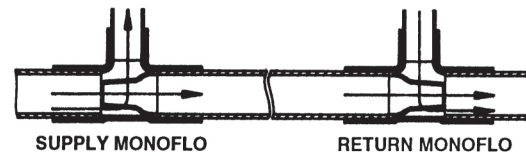
Periodically inspect the Monoflo Fittings for signs of leakage or corrosion.

**WARNING:** Corrosion or leakage are indications that the Monoflo Fitting may be about to cause serious damage. The Monoflo Fitting must be replaced. Failure to follow these instructions could result in serious personal injury or death and property damage.

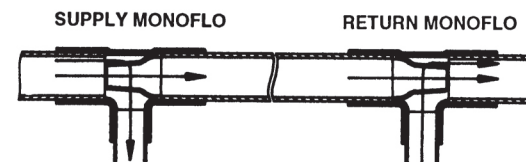
**WARNING:** System fluids under pressure or temperature can be very hazardous. Be sure the pressure has been reduced to zero, the system pressure is below 100°F, and the drain is left open during service. Failure to follow these instructions could result in serious personal injury or death and property damage.



**For terminal units above the main-normal resistance**  
For most installations where terminal units are above the main, only one Monoflo Fitting need be used for each terminal unit.



**For terminal units above the main-high resistance**  
Where characteristics of the installation are such that resistance to circulation is high, two fittings will supply the diversion capacity necessary.



**For terminal units below the main**  
Terminal units below the main require the use of both a Supply and Return Monoflo Fitting, except on a 3/4" main, use a single return fitting.

**xylem**  
Let's Solve Water

Xylem Inc.  
8200 N. Austin Avenue  
Morton Grove, Illinois 60053  
Phone: (847) 966-3700  
Fax: (847) 965-8379  
[www.xylem.com/brands/bellgossett](http://www.xylem.com/brands/bellgossett)

Bell & Gossett is a trademark of Xylem Inc. or one of its subsidiaries.  
© 2012 Xylem Inc. S17635C November 2012