

**Climax Metal Products Company**

8141 Tyler Boulevard  
Mentor, Ohio 44060  
USA

Toll free: 800-542-6552

Phone: 440-585-0300

Fax: 800-860-5553

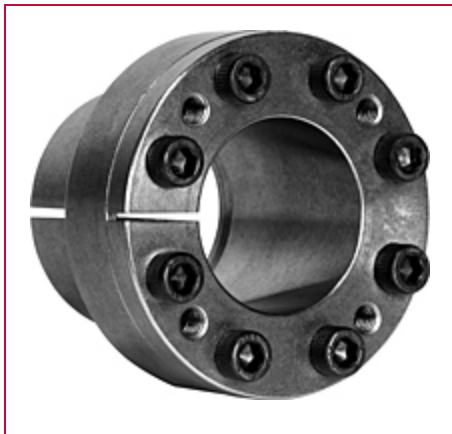
Email: [sales@climaxmetal.com](mailto:sales@climaxmetal.com)

Website: [www.climaxmetal.com](http://www.climaxmetal.com)

## ITEM # C170E-387, SERIES C170 LOCKING ASSEMBLY

Single-taper, self-centering design with mounting flange for use in through-bored components with smaller pitch/outside diameters. Mounted component remains fixed axially during installation.

[View Catalog Page](#)



[Hub OD Calculator](#) | [Drawing](#) | [Specifications](#) |

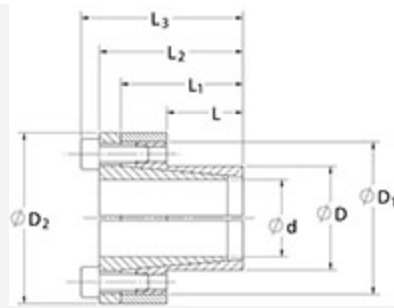
Hub OD Calculator

**Calculator**

[Climax Hub OD Calculator](#)

Drawing

## Dimensional Drawing



Locking Assembly

## Specifications

<b>Shaft Size</b>	3 7/8 in
<b>d</b>	3.875 in
<b>D</b>	4.921 in
<b>D1</b>	6.024 in
<b>D2</b>	6.299 in
<b>L</b>	2.756 in
<b>L1</b>	3.701 in
<b>L2</b>	4.213 in
<b>L3</b>	4.685 in
<b>M<sub>t</sub></b>	10,997 ft-lbs
<b>F<sub>ax</sub></b>	68,108 lbs.F
<b>P<sub>s</sub></b>	16917 psi
<b>P<sub>h</sub></b>	13321 psi
<b>D<sub>N</sub><sup>1</sup></b>	6.677 in
<b>Locking Screws Quantity</b>	12
<b>Locking Screws Size</b>	M12 x 30
<b>M<sub>a</sub>-Locking Screws</b>	107 ft-lbs

<b>Hub Machining Tolerance</b>	+ .003 in
--------------------------------	-----------

<b>Shaft Machining Tolerance</b>	- .003 in
----------------------------------	-----------

<b>Weight</b>	12.00 lb
---------------	----------

<b>UPC Code</b>	044861043349
-----------------	--------------

## Downloads

[Catalog Page](#)

[Installation & Removal Instructions](#)

[Installation Demonstration \(Video\)](#)

[Keyless Locking Technical Information](#)

## Competitor Part Number

### Alternate Part Number

104996982  
7569311  
T82314  
TLK 110 3 7/8

<sup>1</sup> Minimum hub outside diameter based on a Pressure reduction Factor of C=1.0 and hub material with tensile yield point = 45,000 psi. For details see Hub Strength in Technical Information.