

**Climax Metal Products Company**

8141 Tyler Boulevard
Mentor, Ohio 44060
USA

Toll free: 800-542-6552

Phone: 440-585-0300

Fax: 800-860-5553

Email: sales@climaxmetal.com

Website: www.climaxmetal.com

ITEM # C170E-443, SERIES C170 LOCKING ASSEMBLY

Single-taper, self-centering design with mounting flange for use in through-bored components with smaller pitch/outside diameters. Mounted component remains fixed axially during installation.

[View Catalog Page](#)



[Hub OD Calculator](#) | [Drawing](#) | [Specifications](#) |

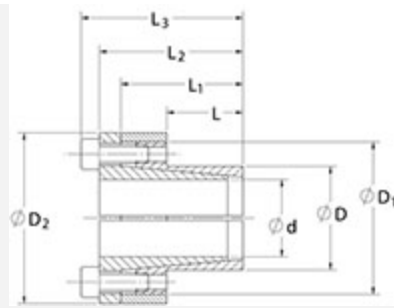
Hub OD Calculator

Calculator

[Climax Hub OD Calculator](#)

Drawing

Dimensional Drawing



Locking Assembly

Specifications

Shaft Size	4 7/16 in
d	4.438 in
D	6.102 in
D1	7.362 in
D2	7.795 in
L	3.543 in
L1	4.528 in
L2	5.039 in
L3	5.512 in
M_t	16,791 ft-lbs
F_{ax}	90,811 lbs.F
P_s	15320 psi
P_h	11140 psi
D_N¹	7.858 in
Locking Screws Quantity	16
Locking Screws Size	M12 x 30
M_a-Locking Screws	107 ft-lbs

Hub Machining Tolerance	+ .003 in
--------------------------------	-----------

Shaft Machining Tolerance	- .003 in
----------------------------------	-----------

Weight	21.00 lb
---------------	----------

UPC Code	044861043417
-----------------	--------------

Downloads

[Catalog Page](#)

[Installation & Removal Instructions](#)

[Installation Demonstration \(Video\)](#)

[Keyless Locking Technical Information](#)

Competitor Part Number

Alternate Part Number

105049563
7569316
T82407
TLK 110 4 7/16

¹ Minimum hub outside diameter based on a Pressure reduction Factor of C=1.0 and hub material with tensile yield point = 45,000 psi. For details see Hub Strength in Technical Information.