



Climax Metal Products Company

8141 Tyler Boulevard
Mentor, Ohio 44060
USA

Toll free: 800-542-6552

Phone: 440-585-0300

Fax: 800-860-5553

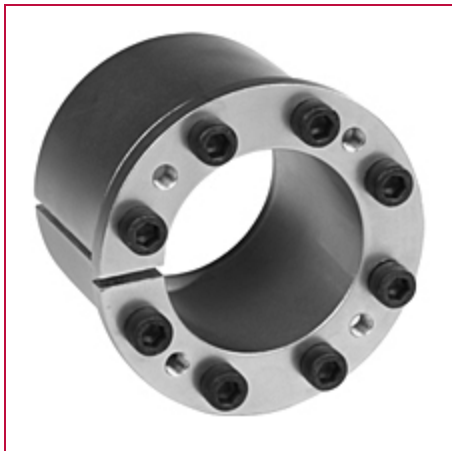
Email: sales@climaxmetal.com

Website: www.climaxmetal.com

ITEM # C192E-081, SERIES C192 LOCKING ASSEMBLY

Drop-in replacement for commonly used hex nut keyless bushings. Mounted component remains fixed axially during installation.

[View Catalog Page](#)



[Hub OD Calculator](#) | [Drawing](#) | [Specifications](#) |

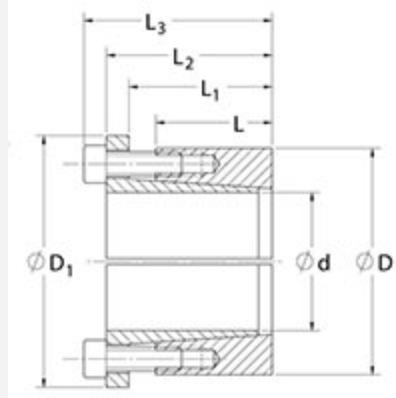
Hub OD Calculator

Calculator

[Climax Hub OD Calculator](#)

Drawing

Dimensional Drawing



Locking Assembly

Specifications

Shaft Size	13/16 in
d	0.813 in
D	1.750 in
D1	1.969 in
L	0.677 in
L1	0.875 in
L2	1.110 in
L3	1.346 in
M_t	2,779 in-lbs
F_{ax}	6,839 lbs.F
P_s	20,435 psi
P_h	9,489 psi
D_N¹	2.168 in
Locking Screws Quantity	5
Locking Screws Size	M6 x 20
M_a-Locking Screws	150 in-lbs

Hub Machining Tolerance	±.003 in
--------------------------------	----------

Shaft Machining Tolerance	±.003 in
----------------------------------	----------

Weight	0.66 lb
---------------	---------

UPC Code	044861059838
-----------------	--------------

[Catalog Page](#)

Downloads

[Installation & Removal Instructions](#)

[Installation Demonstration \(Video\)](#)

Competitor Part Number	—
-------------------------------	---

Alternate Part Number	6202190
------------------------------	---------

¹ Minimum hub outside diameter based on a Pressure reduction Factor of C=1.0 and hub material with tensile yield point = 45,000 psi. For details see Hub Strength in Technical Information.