



**Climax Metal Products Company**

8141 Tyler Boulevard  
Mentor, Ohio 44060  
USA

Toll free: 800-542-6552

Phone: 440-585-0300

Fax: 800-860-5553

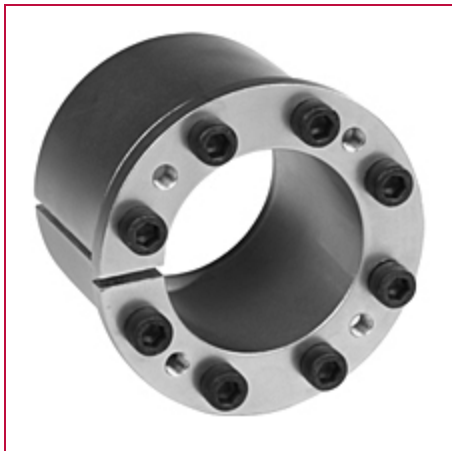
Email: [sales@climaxmetal.com](mailto:sales@climaxmetal.com)

Website: [www.climaxmetal.com](http://www.climaxmetal.com)

## ITEM # C192E-156, SERIES C192 LOCKING ASSEMBLY

Drop-in replacement for commonly used hex nut keyless bushings. Mounted component remains fixed axially during installation.

[View Catalog Page](#)



[Hub OD Calculator](#) | [Drawing](#) | [Specifications](#) |

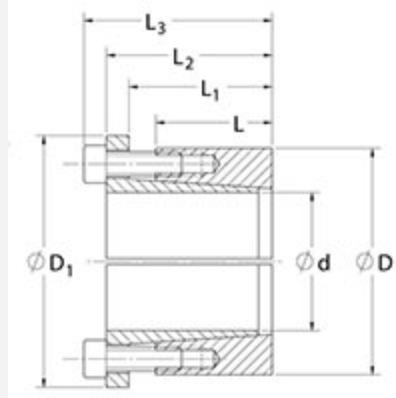
Hub OD Calculator

**Calculator**

[Climax Hub OD Calculator](#)

Drawing

## Dimensional Drawing



Locking Assembly

## Specifications

<b>Shaft Size</b>	1 9/16 in
<b>d</b>	1.563 in
<b>D</b>	2.625 in
<b>D1</b>	2.874 in
<b>L</b>	1.409 in
<b>L1</b>	1.688 in
<b>L2</b>	1.921 in
<b>L3</b>	2.157 in
<b>M<sub>t</sub></b>	8,550 in-lbs
<b>F<sub>ax</sub></b>	10,943 lbs.F
<b>P<sub>s</sub></b>	8,819 psi
<b>P<sub>h</sub></b>	5,249 psi
<b>D<sub>N</sub><sup>1</sup></b>	2.952 in
<b>Locking Screws Quantity</b>	8
<b>Locking Screws Size</b>	M6 x 20
<b>M<sub>a</sub>-Locking Screws</b>	150 in-lbs

<b>Hub Machining Tolerance</b>	±.003 in
--------------------------------	----------

<b>Shaft Machining Tolerance</b>	±.003 in
----------------------------------	----------

<b>Weight</b>	1.76 lb
---------------	---------

<b>UPC Code</b>	044861060056
-----------------	--------------

[Catalog Page](#)

#### Downloads

[Installation & Removal Instructions](#)

[Installation Demonstration \(Video\)](#)

<b>Competitor Part Number</b>	—
-------------------------------	---

<b>Alternate Part Number</b>	6202430
------------------------------	---------

<sup>1</sup> Minimum hub outside diameter based on a Pressure reduction Factor of C=1.0 and hub material with tensile yield point = 45,000 psi. For details see Hub Strength in Technical Information.