

**Climax Metal Products Company**

8141 Tyler Boulevard
Mentor, Ohio 44060
USA

Toll free: 800-542-6552

Phone: 440-585-0300

Fax: 800-860-5553

Email: sales@climaxmetal.com

Website: www.climaxmetal.com

ITEM # C193E-100, SERIES C193 LOCKING ASSEMBLY

Single-taper, self-centering design with mounting flange for use in through-bored components. Mounted component remains fixed axially during installation.

[View Catalog Page](#)



[Hub OD Calculator](#) | [Drawing](#) | [Specifications](#) |

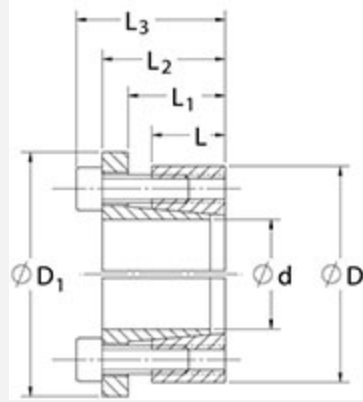
Hub OD Calculator

Calculator

[Climax Hub OD Calculator](#)

Drawing

Dimensional Drawing



Locking Assembly

Specifications

Shaft Size	1 in
d	1.000 in
D	1.688 in
D1	1.875 in
L	0.591 in
L1	0.754 in
L2	0.984 in
L3	1.181 in
M_t	3,518 in-lbs
F_{ax}	7,037 lbs.F
P_s	31,582 psi
P_h	18,715 psi
D_N^1	2.627 in
Locking Screws Quantity	8
Locking Screws Size	M5 x 18
M_a-Locking Screws	89 in-lbs

Hub Machining Tolerance +.001 in

Shaft Machining Tolerance -.001 in

Weight 0.400 lb

UPC Code 044861046616

Downloads

[Catalog Page](#)

[Installation & Removal Instructions](#)

[Installation Demonstration \(Video\)](#)

[Keyless Locking Technical Information](#)

Competitor Part Number

Alternate Part Number

104996578
7569326
B902100
PL1 KE

¹ Minimum hub outside diameter based on a Pressure reduction Factor of C=1.0 and hub material with tensile yield point = 45,000 psi. For details see Hub Strength in Technical Information.