

**Climax Metal Products Company**

8141 Tyler Boulevard
Mentor, Ohio 44060
USA

Toll free: 800-542-6552

Phone: 440-585-0300

Fax: 800-860-5553

Email: sales@climaxmetal.com

Website: www.climaxmetal.com

ITEM # C193M-28, SERIES C193 METRIC LOCKING ASSEMBLY

Single-taper, self-centering design with mounting flange for use in through-bored components. Mounted component remains fixed axially during installation.

[View Catalog Page](#)



[Hub OD Calculator](#) | [Drawing](#) | [Specifications](#) |

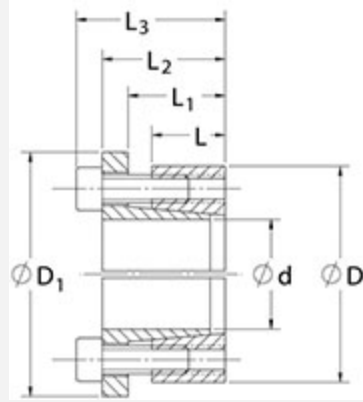
Hub OD Calculator

Calculator

[Climax Hub OD Calculator](#)

Drawing

Dimensional Drawing



Metric Locking Assembly

Specifications

Shaft Size	28 mm
d	1.102 in
D	1.875 in
D1	2.000 in
L	0.669 in
L1	0.829 in
L2	1.102 in
L3	1.299 in
M_t	4,363 in-lbs
F_{ax}	7,916 lbs.F
P_s	28,473 psi
P_h	16,740 psi
D_N¹	2.771 in
Locking Screws Quantity	9
Locking Screws Size	M5 x 18
M_a-Locking Screws	89 in-lbs

Hub Machining Tolerance	+ .001 in
--------------------------------	-----------

Shaft Machining Tolerance	- .001 in
----------------------------------	-----------

Weight	0.60 lb
---------------	---------

UPC Code	044861046821
-----------------	--------------

[Catalog Page](#)

[Installation & Removal Instructions](#)

[Installation Demonstration \(Video\)](#)

[Keyless Locking Technical Information](#)

Downloads

Competitor Part Number

Alternate Part Number

104997523
7569342
PL028X046KE
T901028

¹ Minimum hub outside diameter based on a Pressure reduction Factor of C=1.0 and hub material with tensile yield point = 45,000 psi. For details see Hub Strength in Technical Information.