



Climax Metal Products Company

8141 Tyler Boulevard
Mentor, Ohio 44060
USA

Toll free: 800-542-6552

Phone: 440-585-0300

Fax: 800-860-5553

Email: sales@climaxmetal.com

Website: www.climaxmetal.com

ITEM # C415E-643, SERIES C415 LOCKING ASSEMBLY

Wide, medium taper, self-centering design for use in through-bored components with high torque and/or bending requirements. Mounted component remains fixed axially during installation.

[View Catalog Page](#)



[Hub OD Calculator](#) | [Drawing](#) | [Specifications](#) |

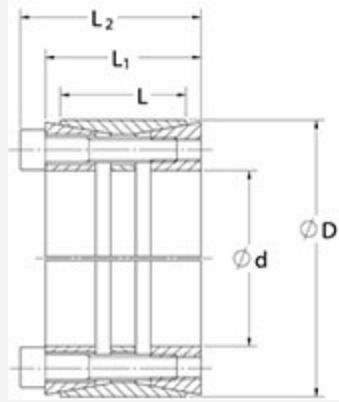
Hub OD Calculator

Calculator

[Climax Hub OD Calculator](#)

Drawing

Dimensional Drawing



Locking Assembly

Specifications

Shaft Size	6 7/16 in
d	6.438 in
D	8.858 in
L	3.071 in
L1	3.661 in
L2	4.213 in
M_t	47,284 ft-lbs
F_{ax}	176,282 lbs.F
P_s	28828 psi
P_h	20950 psi
D_N^1	14.669 in
Locking Screws Quantity	15
Locking Screws Size	M14 x 80
M_a-Locking Screws	170 ft-lbs
Hub Machining Tolerance	+0.003 in
Shaft Machining Tolerance	-0.003 in

Weight	25.00 lb
---------------	----------

UPC Code	044861047255
-----------------	--------------

Downloads[Catalog Page](#)[Installation & Removal Instructions](#)[Installation Demonstration \(Video\)](#)[Keyless Locking Technical Information](#)**Competitor Part Number****Alternate Part Number**

104995562
7009 ECOLOC 6.438 x 8.858
7569379
T152607

¹ Minimum hub outside diameter based on a Pressure reduction Factor of C=1.0 and hub material with tensile yield point = 45,000 psi. For details see Hub Strength in Technical Information.