



Climax Metal Products Company

8141 Tyler Boulevard
Mentor, Ohio 44060
USA

Toll free: 800-542-6552

Phone: 440-585-0300

Fax: 800-860-5553

Email: sales@climaxmetal.com

Website: www.climaxmetal.com

ITEM # C600E-075, SERIES C600 KEYLESS RIGID COUPLING

Keyless Rigid Coupling with high torque and overhung load capacity.

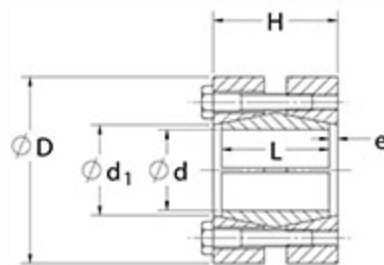
[View Catalog Page](#)



[Drawing](#) | [Specifications](#) |

Drawing

Dimensional Drawing



Keyless Rigid Coupling

Specifications

Shaft Size	3/4 in
d	0.750 in
D	2.047 in
M_t	200 ft-lbs
H	1.339 in
L	1.181 in
e	0.079 in
d1	0.827 in
Locking Screws Quantity	3
Locking Screws Size	M6 x 30
M_a-Locking Screws	9 ft-lbs
Shaft Machining Tolerance	-.003 in
Weight	0.900 lb

UPC Code 044861048696

[Catalog Page](#)

[Installation & Removal Instructions](#)

Downloads

[Installation Demonstration \(Video\)](#)

[Keyless Locking Technical Information](#)

Competitor Part Number

Alternate Part Number

104998513
7569477
HWK0152012