



Climax Metal Products Company

8141 Tyler Boulevard
Mentor, Ohio 44060
USA

Toll free: 800-542-6552

Phone: 440-585-0300

Fax: 800-860-5553

Email: sales@climaxmetal.com

Website: www.climaxmetal.com

ITEM # C600E-218, SERIES C600 KEYLESS RIGID COUPLING

Keyless Rigid Coupling with high torque and overhung load capacity.

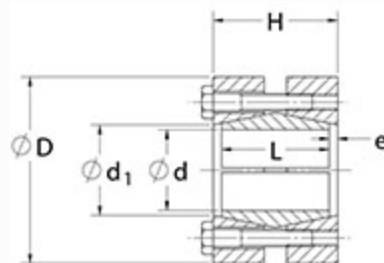
[View Catalog Page](#)



[Drawing](#) | [Specifications](#) |

Drawing

Dimensional Drawing



Keyless Rigid Coupling

Specifications

Shaft Size	2 3/16 in
-------------------	-----------

d	2.188 in
----------	----------

D	4.724 in
----------	----------

M_t	4,490 ft-lbs
----------------------	--------------

H	3.071 in
----------	----------

L	2.756 in
----------	----------

e	0.157 in
----------	----------

d1	2.598 in
-----------	----------

Locking Screws Quantity	12
--------------------------------	----

Locking Screws Size	M8 x 55
----------------------------	---------

M_a-Locking Screws	22 ft-lbs
-------------------------------------	-----------

Shaft Machining Tolerance	-.006 in
----------------------------------	----------

Weight	10.30 lb
---------------	----------

UPC Code	044861048900
-----------------	--------------

[Catalog Page](#)

[Installation & Removal Instructions](#)

Downloads

[Installation Demonstration \(Video\)](#)

[Keyless Locking Technical Information](#)

Competitor Part Number	-
-------------------------------	---

Alternate Part Number	104997780 7569496 HWK0602203
------------------------------	------------------------------------